

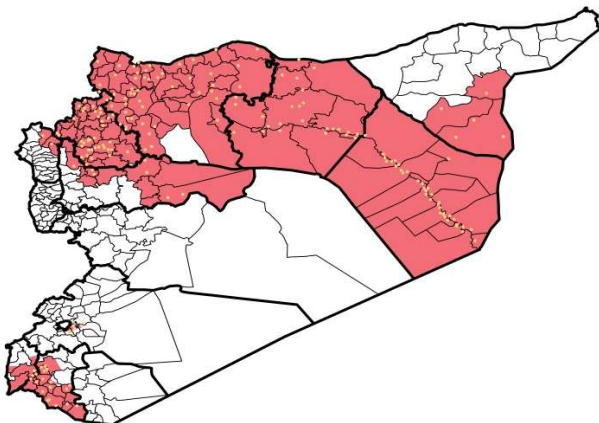
**Highlights**

- 5<sup>th</sup> ERC was held on 18<sup>th</sup> May to classify nine AFP cases, 3 of them were lost to 60 days-follow up, and 3 of them died before 60 days follow-up. Other 3 were with inadequate samples and residual paralysis on the 60 days follow-up.
- ERC Classification results: 1 Compatible case in Ar Raqqa - other 8 cases were classified as Discarded.
- During Epi-week no 22 2015; 90 % (423/380) of the health facilities across 10 Governorates provided surveillance data, 90% of reporting sites submitted the weekly reports on time.
- The total number of consultations reported during the reporting week was 120278 (including 40% children under the age of five) compared to 125412 consultations during week 21, 2015.
- In Epi week 22, 6 AFP (Acute Flaccid Paralysis) cases were reported in Jebel Saman 3 – Azaz 1 –Dar`a 1 and Al Mar`a 1. Investigation for 119 AFP cases were conducted since the beginning of 2015 up to date. See weekly Acute Flaccid Paralysis Surveillance report for more details.
- 70 suspected measles cases reported in this week, the highest alerts were reported in Ar Raqqa (17).

- Lab investigation for 3 suspected measles cases in Harim and AsSalamyieh, with negative Measles IgM result. Most cases are enrolled in a line list.
- The number the STF cases (Suspected Typhoid Fever), was about 1745 cases, the highest alerts were reported in Harim (10).
- 526 cases of SARI reported in Epi Week 22, the highest alerts were reported in Afrin (9).
- In Epi week 22: 4974 cases of Acute Diarrhea and 5343 cases of Influenza Like Illness were reported.
- Common disease reported under others were acute bronchiolitis (201 cases), chicken pox (94 cases), Brucellosis (60 cases), Pertussis (38 cases), Scabies, Lice, Cutaneous leishmaniasis, mumps (4 new cases in Idleb and Harim), and Hand, foot and mouth diseases. Four new T.B cases were reported in: Rural Damascus and Idleb.
- 39 new cases of Hand, foot and mouth disease were reported in Daraa (Jizeh, Kherbet Gazala and Hrak).
- 1463 new Cutaneous leishmaniasis cases reported this week, the alerts reported in 5 districts: Harim 3 - As Suqaylabiyah 2 - Jebel Saman 2 - Al Mar`a 1 - Ar Raqqa 1

**EWARN Coverage**

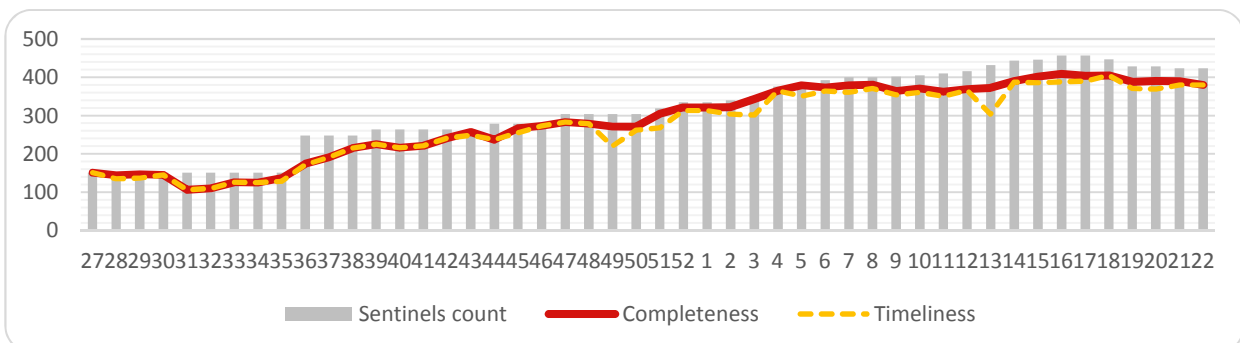
ACU covers 111 sub districts in 10 governorates



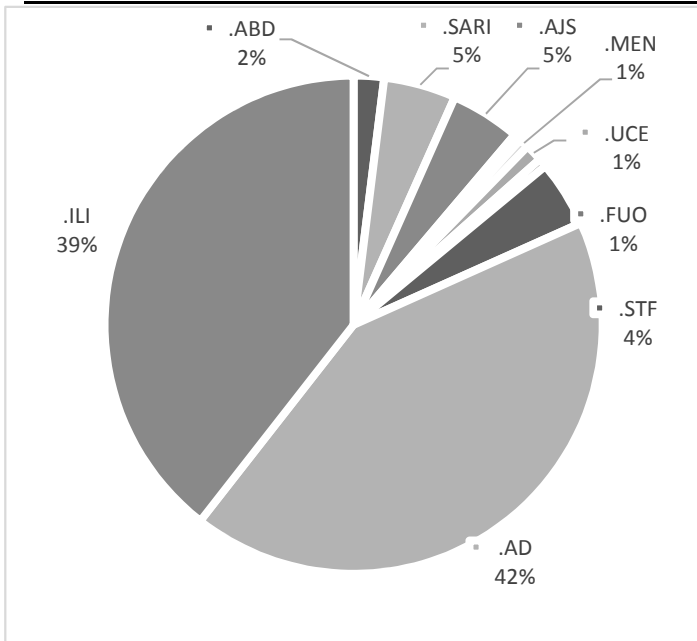
**Number of Sentinel Sites and Total Number of Consultations**

Governorate	# of sentinel	Reporting Sentinels	# of consultations
Al- Hasakeh	28	28	3012
Aleppo	135	130	35826
Ar-Raqqa	60	56	11082
Damascus	2	2	916
Dar`a	22	11	7851
Deir-ez-Zor	61	55	16280
Hama	15	15	6142
Idleb	80	69	33265
Lattakia	3	3	1431
Quneitra	5	0	0
Rural Damascus	12	11	4473
<b>Grand total</b>	<b>423</b>	<b>380</b>	<b>120278</b>

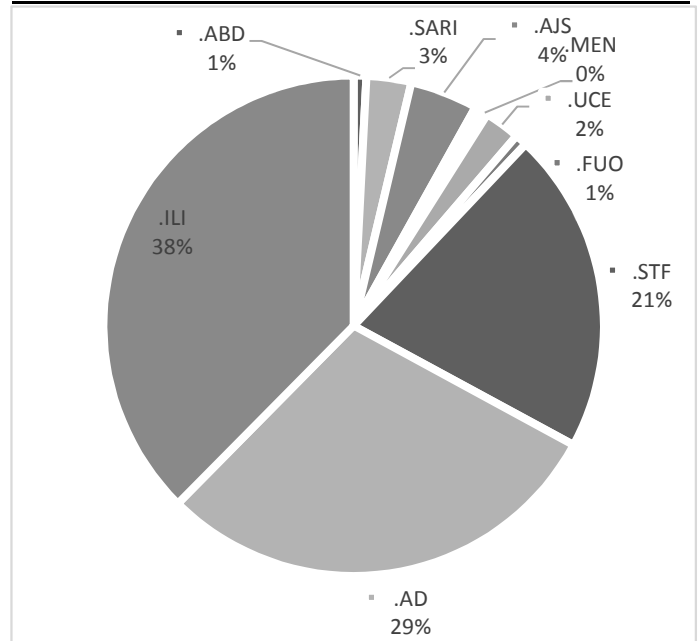
**Completeness and Timeliness**



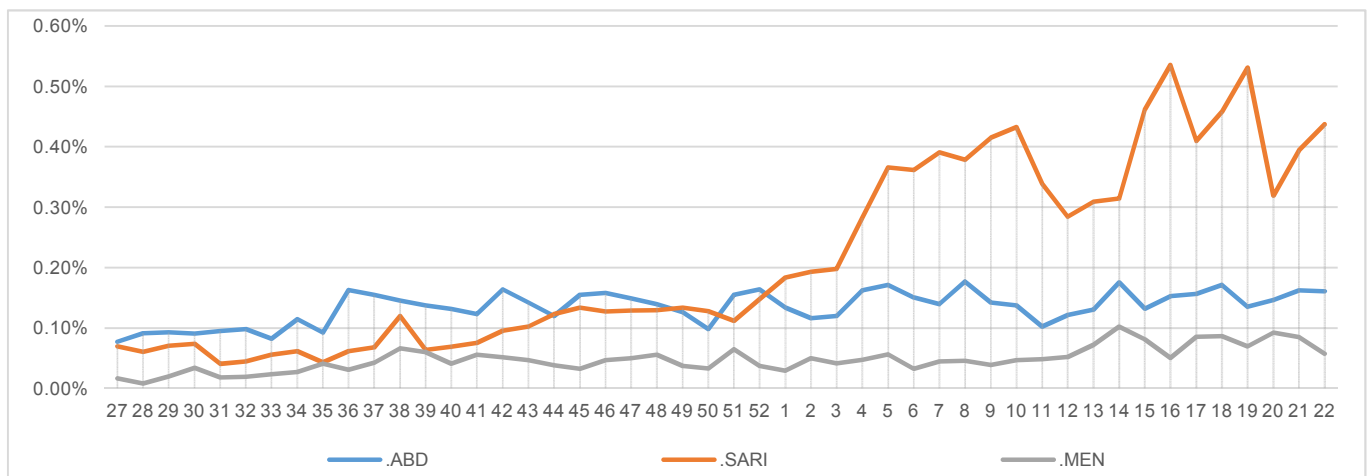
**Percentage of EWARN Syndromes < 5Y**



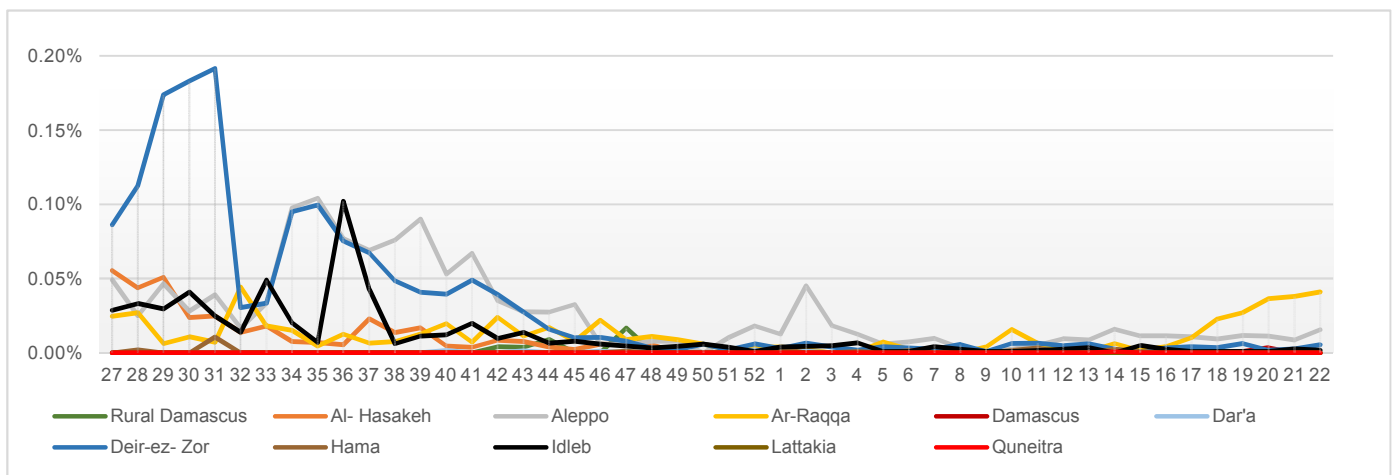
**Percentage of EWARN Syndromes > 5Y**



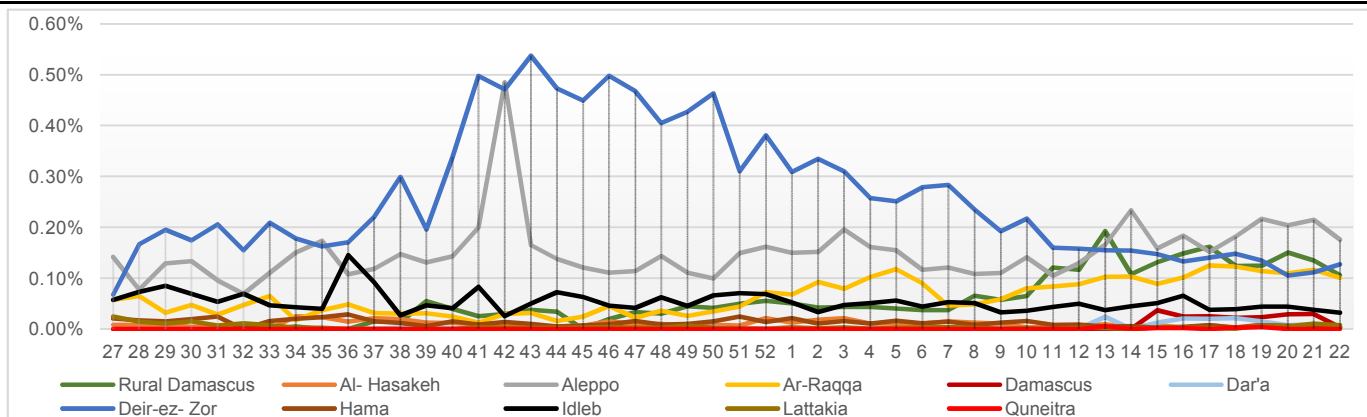
**Trends for essential priority diseases in 9 governorates – Epi week 27-2014 to Epi week 22 - 2015**



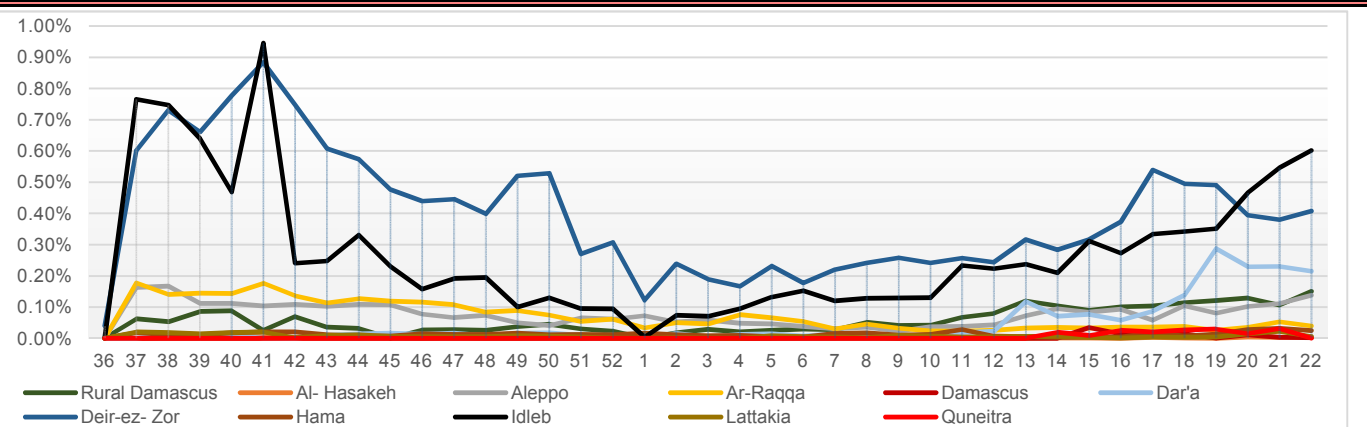
**Proportional Morbidity of suspected Measles by Governorate, Epi Week 22 - 2015**



**Proportional Morbidity of suspected AJS by Governorate, Epi Week 22 - 2015**



**Proportional Morbidity of suspected STF by Governorate, Epi Week 22 - 2015**



**Number of cases that EWARN observes by age & geographical area for Epi week 22 - 2015**

Governorate	ABD	AWD	AJS	SARI	AFP	MEA	MEN	UCE	UXD	FUO	AD	ILI	LEISH	STF	OTHER	TOTAL	
Al-Hasakeh	< 5	3	0	2	1	0	0	0	0	0	56	2	2	1	1140	3012	
	> 5	1	0	0	8	0	0	0	0	0	46	2	0	4	1744		
Aleppo	< 5	24	0	120	167	3	9	13	5	3	21	816	854	154	45	12610	35826
	> 5	17	0	73	125	1	8	9	35	1	27	491	612	351	107	19125	
Ar-Raqqa	< 5	16	0	53	6	0	21	2	1	0	0	213	90	21	14	4211	11082
	> 5	9	0	58	1	0	24	12	5	0	2	215	87	68	29	5924	
Damascus	< 5	0	0	0	0	0	0	0	0	0	0	22	2	0	0	402	916
	> 5	0	0	4	0	0	0	0	0	0	0	15	0	0	2	469	
Dar'a	< 5	1	0	1	12	1	0	0	50	0	0	115	17	0	76	2839	7851
	> 5	0	0	3	5	0	0	0	53	0	0	81	38	1	160	4398	
Deir-ez-Zor	< 5	81	0	106	51	0	5	17	0	0	14	932	883	21	91	7299	16280
	> 5	21	0	34	23	0	1	2	0	0	17	360	669	44	357	5252	
Hama	< 5	3	0	0	5	0	0	3	0	0	1	73	199	32	2	1305	6142
	> 5	3	0	4	7	0	0	0	0	0	2	164	332	144	25	3838	
Idleb	< 5	8	0	14	79	1	0	8	20	0	2	696	687	139	45	9252	33266
	> 5	6	0	21	30	1	2	3	55	0	5	669	863	484	616	19560	
Lattakia	< 5	0	0	0	0	0	0	0	0	0	0	0	0	0	0	282	1431
	> 5	0	0	8	0	0	0	0	0	0	0	0	0	2	6	1133	
Quneitra	< 5	0	0	0	0	0	0	0	0	0	0	0	0	0	0	0	0
	> 5	0	0	0	0	0	0	0	0	0	0	0	0	0	0	0	
Rural Damascus	< 5	0	0	17	5	0	0	0	3	0	0	6	1	0	25	1193	4473
	> 5	0	0	99	1	0	0	0	12	0	2	4	5	0	140	2960	
TOTAL	< 5	136	0	313	326	5	35	43	79	3	38	2929	2735	369	299	40533	120278
	> 5	57	0	304	200	1	35	26	160	1	55	2045	2608	1094	1446	64403	
Grand total		193	0	617	526	6	70	69	239	4	93	4974	5343	1463	1745	104936	

Disease	Alert threshold	#HF reach threshold	# Cases	The most affected Communities-Districts
AFP	1	6	6	Jebel Saman 3 – Azaz 1 - Al Ma`ra 1 - Dar`a 1
MEA	1	34	70	Ar Raqqa 17 - Menbij 8 - Abu Kamal 3 - Jebel Saman 2 - Idleb 2 - Deir ez zor 1 - Al Mayadin 1
AJS	5	42	614	Ar Raqqa 9 -Rural Damascus 6- Afrin 6 - Menbij 5 - Al Mayadin 4 - Jebel Saman 3 - Al Mar`a 2 - Duma 1 - Jisr AshShugur 1 - Azaz 1 - Abu Kamal 1 - Al Hafa 1 - Deir ez zor 1
STF	5	73	1745	Harim 10 - Al Mayadin 10 - Deir ez zor 10 - Abu Kamal 8 - Jebel Saman 8 -Rural Damascus 7- Al Mar`a 6 - Izra` 3 - Idleb 3 - Duma 2 - AsSanamayn 2 - AsSalamyieh 2 -Dar`a 1 - Jisr AshShugur 1
ABD	5	4	193	Al Mayadin 1 - Abu Kamal 1 - Deir ez zor 1- Jebel Saman 1
SARI	5	19	526	Afrin 9 - Abu Kamal 2 - Harim 2 - Jebel Saman 2 - Al Mayadin 1 - Al Ma`ra 1 - Jisr AshShugur 1 - Izra` 1
MEN	5	0	69	
(LEISH) UCE	50	9	1463	Harim 3 - As Suqaylabiyah 2 - Jebel Saman 2 Al Mar`a 1 - Ar Raqqa 1

## Response Activities

- MRFS provided Cholera RT for DLOs in : Aleppo, Idleb and Hama.
- Supervision visits in sentinel sites with the DLOs and FLOs in Aleppo, Hama, Idleb and Atmeh camps
- 5<sup>th</sup> ERC was held on 18<sup>th</sup> May to classify nine AFP cases , and the results were : 1 Compatible case in Ar Raqqa - other 8 cases were classified as Discarded .
- Series of meetings with several NGOs (MRFS, SAMS, SEMA, UOSSM, MSF, BIHAR, Syria Charity ,FMA , Relief International ) were held to improve the cooperation between the partners and improve relations with the sentinel sites which supported by them in Syria.
- Launch preparations for quarterly meeting with DLOs at the beginning of June.

ABD=Acute Bloody Diarrhea

AWD=Acute Watery Diarrhea

AFP=Acute Flaccid Paralysis

AJS=Acute Jaundice Syndrome

SARI= Severe Acute Respiratory Illness

UXD=Unexplained Death

FUO=Fever Of Unknown Origin

MEA=suspected Measles

MEN= suspected Meningitis

UCE=Unexplained Cluster Of Health Events

AD=Acute Diarrhea

ILI= Influenza-like Illness