

Epidemiological Weekly Bulletin
 Syria EWARN

Highlights

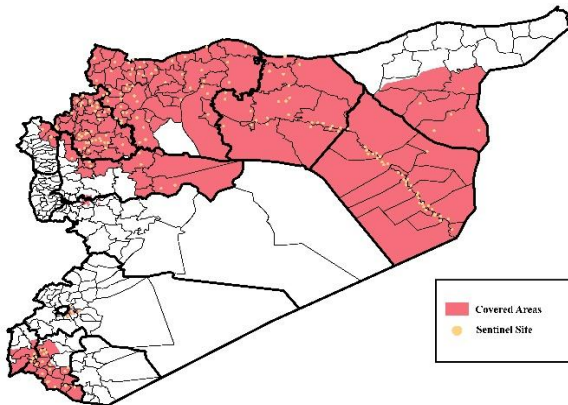
- Second quarterly meeting in 2015 with DLOs was held on June^{10th} till 14th, for eleven DLOs, two FLO and two NGO guests. For more details, please see the extension.
- Employment new staff in northern rural of Homs governorate.
- During Epi-week no 24 2015; 85% (434/368) of the health facilities across 12 Governorates provided surveillance data, 71% of reporting sites submitted the weekly reports on time. The decrease in timeliness this week is due to the late reporting during the quarterly meeting.
- The total number of consultations reported during the reporting week was 114606 (including 40% children under the age of five) compared to 117736 consultations during week 23, 2015.
- In Epi week 24, 6 AFP (Acute Flaccid Paralysis) cases were reported in Menbij 3 – Al Ma`ra 1 - Jebel Saman 1 and Abu Kamal 1. Investigation for 132 AFP cases were conducted since the beginning of 2015 up to date. See weekly Acute Flaccid Paralysis Surveillance report for more details.
- 69 suspected measles cases reported in this week, the highest alerts were reported in Ar Raqqa (16).

- The number the STF cases (Suspected Typhoid Fever), was about 1694 cases, the highest alerts were reported in Al Mayadin (10) and Deir ez zor (10).
- 286 cases of SARI reported in Epi Week 24, the highest alerts were reported in Afrin (5).
- In Epi week 24: 5642 cases of Acute Diarrhea and 5046 cases of Influenza Like Illness were reported.
- Common disease reported under others were acute bronchiolitis (125 cases), chicken pox (111 cases), Brucellosis (101 cases), Pertussis (27 cases), Scabies, Lice, mumps, Cutaneous leishmaniasis, and Hand, foot and mouth diseases.
- 28 new cases of Hand, foot and mouth disease were reported in Daraa, Jizeh.
- 1023 new Cutaneous leishmaniasis cases reported this week, the alerts reported in 3 districts: As Suqaylabiyah 1 - Al Mar`a 1 and Ar Raqqa 1

EWARN Coverage

EWARN covers 113 sub districts in 12 governorates

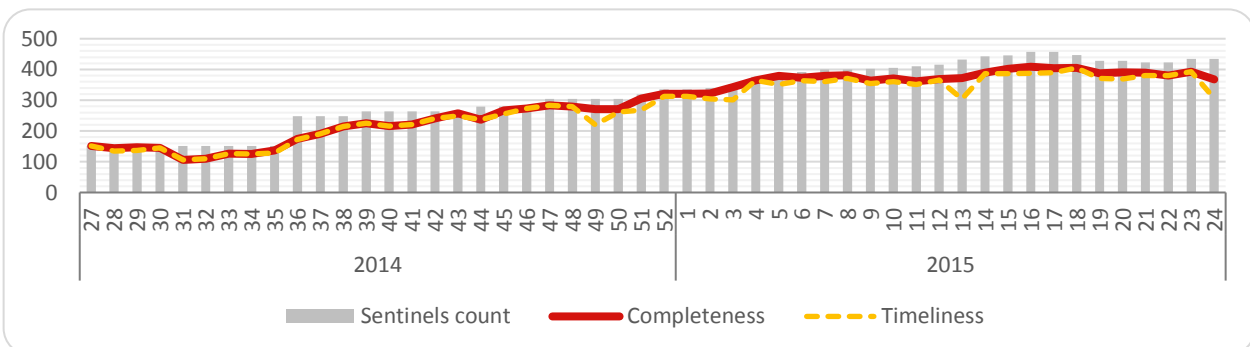
EWARN Coverage Map



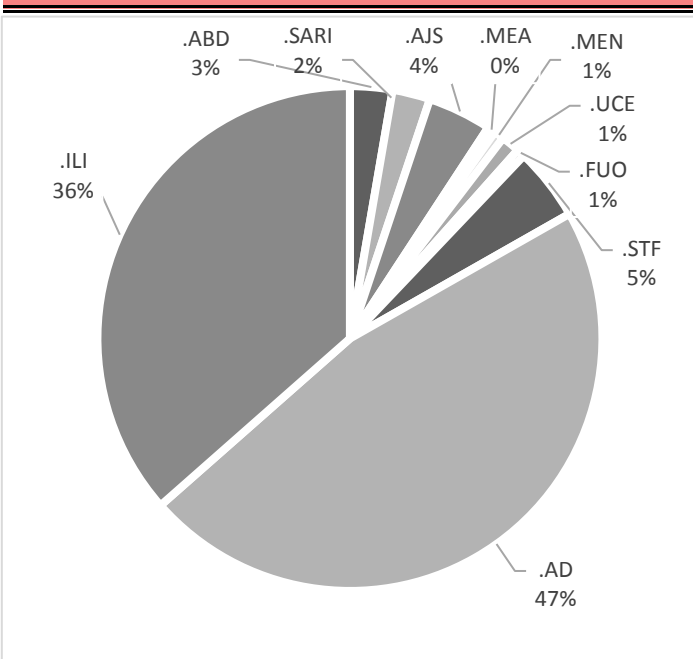
Number of Sentinel Sites and Total Number of Consultations

Governorate	# of sentinel	Reporting Sentinel	# of consultations
Al- Hasakeh	28	28	3188
Aleppo	135	128	33594
Ar-Raqqa	61	47	9988
Damascus	2	2	943
Dar'a	22	15	9645
Deir-ez-Zor	61	47	14858
Hama	14	14	5953
Homs	11	10	336
Idleb	80	63	30287
Lattakia	3	3	1266
Quneitra	5	4	1091
Rural Damascus	12	7	3457
Grand total	434	368	114606

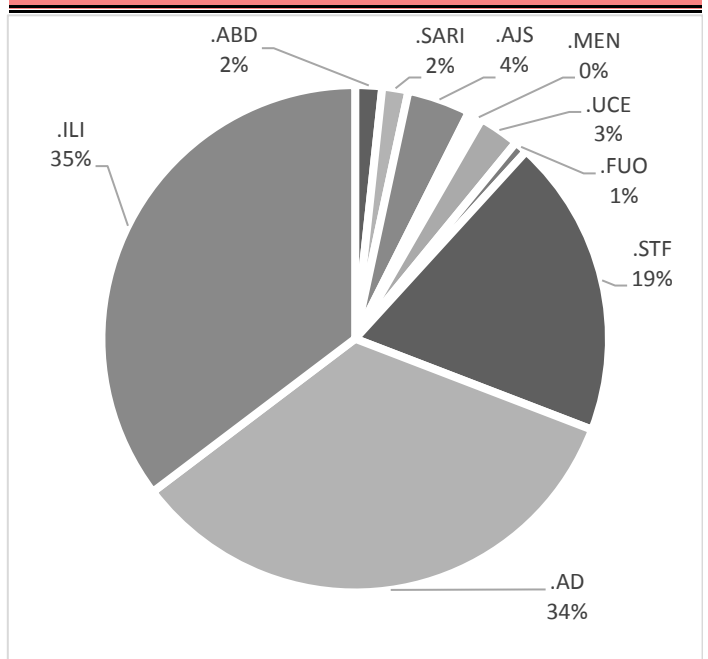
Completeness and Timeliness



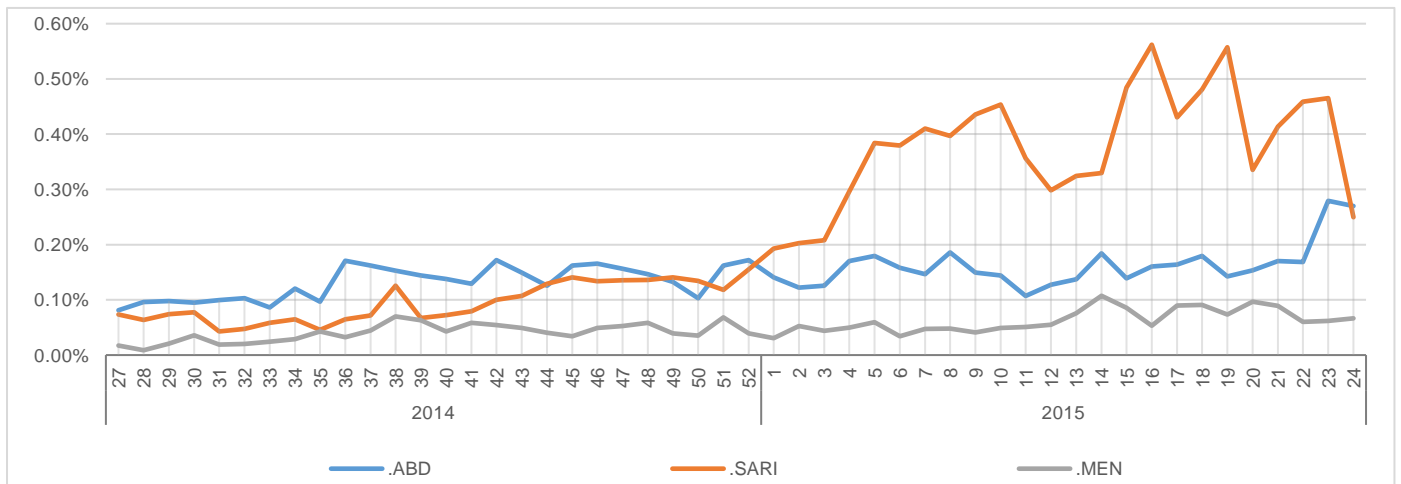
Percentage of EWARN Syndromes < 5Y



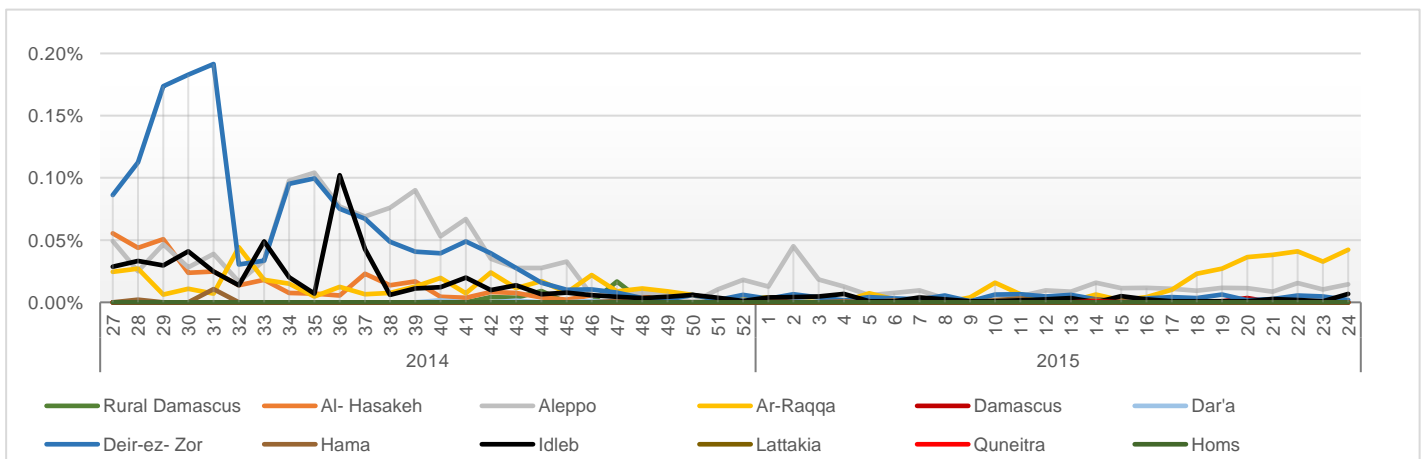
Percentage of EWARN Syndromes >=5Y



Trends for essential priority diseases in 12 governorates – Epi week 27-2014 to Epi week 24 - 2015

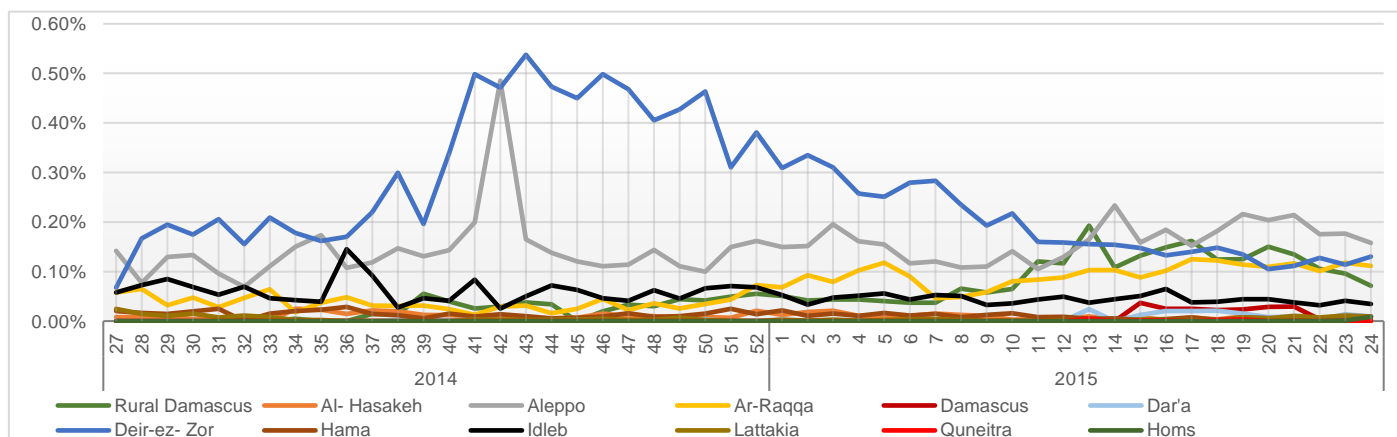


Proportional Morbidity of suspected Measles by Governorate, Epi Week 24 - 2015



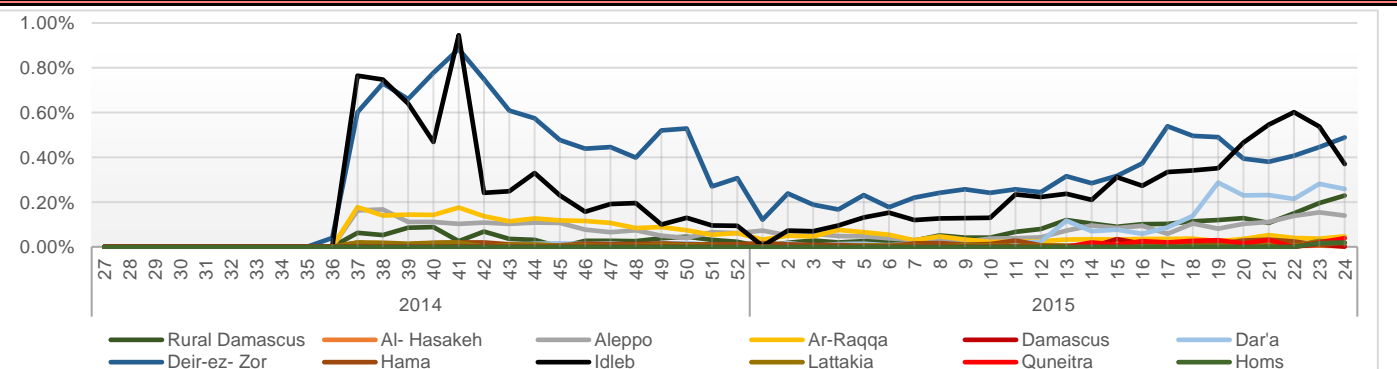
Proportional Morbidity of suspected AJS by Governorate, Epi Week

24 - 2015



Proportional Morbidity of suspected STF by Governorate, Epi Week

24 - 2015



Number of cases that EWARN observes by age & geographical area for Epi week

24 - 2015

Governorate	ABD	AWD	AJS	SARI	AFP	MEA	MEN	UCE	UXD	FUO	AD	ILI	LEISH	STF	OTHER	TOTAL
Al- Hasakeh	< 5	21	0	4	2	0	0	0	0	0	217	6	3	0	1093	3188
	> 5	29	0	1	3	0	0	0	0	1	117	7	1	3	1680	
Aleppo	< 5	15	0	92	63	4	9	12	3	1	735	578	76	28	11416	33594
	> 5	23	0	72	75	0	6	4	25	1	482	443	247	117	19040	
Ar-Raqqa	< 5	16	0	67	6	0	18	1	0	0	200	66	17	14	3808	9988
	> 5	9	0	49	0	0	26	12	0	0	181	64	75	35	5324	
Damascus	< 5	14	0	0	0	0	0	0	0	5	32	2	0	0	379	943
	> 5	12	0	10	0	0	0	0	0	23	28	0	0	1	437	
Dar'a	< 5	5	0	5	2	0	1	1	40	0	49	31	3	98	3992	9645
	> 5	5	0	5	1	0	0	85	0	0	49	32	0	170	5071	
Deir-ez-Zor	< 5	104	0	95	46	1	1	21	24	0	953	720	11	98	6592	14858
	> 5	29	0	40	20	0	1	8	35	0	390	502	33	410	4702	
Hama	< 5	8	0	0	8	0	0	2	0	0	110	193	29	1	1316	5953
	> 5	4	0	2	5	0	0	0	1	0	186	335	143	18	3589	
Homs	< 5	0	0	3	1	0	0	0	0	1	82	67	0	8	19	336
	> 5	0	0	6	1	0	0	0	0	1	48	68	0	12	19	
Idleb	< 5	3	0	13	35	1	6	7	13	0	805	826	121	45	7706	30288
	> 5	10	0	23	12	1	1	3	27	0	950	1080	264	340	17990	
Lattakia	< 5	0	0	0	0	0	0	0	0	0	0	0	0	0	240	1266
	> 5	0	0	10	0	0	0	0	0	0	0	0	0	18	998	
Quneitra	< 5	0	0	0	1	0	0	0	0	0	0	15	0	16	467	1091
	> 5	0	0	0	1	0	0	5	5	0	4	11	0	24	542	
Rural Damascus	< 5	0	0	2	2	0	0	2	0	2	22	0	0	13	838	3457
	> 5	2	0	72	2	0	0	10	3	6	2	0	0	225	2254	
TOTAL	< 5	186	0	281	166	6	35	44	82	1	3205	2504	260	321	37866	114606
	> 5	123	0	290	120	0	34	32	187	5	2437	2542	763	1373	61646	
Grand total		309	0	571	286	6	69	76	269	6	5642	5046	1023	1694	99512	

Disease	Alert threshold	#HF reach threshold	# Cases	The most affected Communities-Districts
AFP	1	6	6	Menbij 3 – Al Ma`ra 1 - Jebel Saman 1 - Abu Kamal 1
MEA	1	33	69	Ar Raqqa 16 - Menbij 7 - Abu Kamal 2 - Jebel Saman 2 - Idleb 2 - Harim 1 - Ma`ra 1 - Dar`a 1 - Al Bab 1
AJS	5	39	571	Ar Raqqa 10 - Mayadin 6 - Rural Damascus 4- Menbij 4 - Afrin 3 - Deir ez zor 2 - Jebel Saman 2 - Al Bab 1 -Jisr AshShugur 1 - Azaz 1- Al Hafa 1 - Jarablus 1 -Ma`ra 1- Duma 1- Damascus 1
STF	5	75	1694	Al Mayadin 10 -Deir ez zor 10 - Abu Kamal 8 - Ma`ra 8- Harim 7 - Jebel Saman 7 -Rural Damascus 4- Quneitra 4- Izra` 3 -Jisr AshShugur 3 - Idleb 2 - AsSanamayn 2-Dar`a 2 - Lattakia 1 - Hafa 1 - Rastan 1 -Duma 1 -As Salamiyeh 1
ABD	5	16	309	Al Mayadin 4 - Abu Kamal 3 - Hasakeh 3 - Deir ez zor 2 -Damascus 2 - Jebel Saman 1 - Dar`a 1
SARI	5	13	286	Afrin 5 - Al Bab 2 - Harim 1 - Abu Kamal 1 - Jisr AshShugur 1- Jebel Saman 1 - Ma`ra 1 - Al Mayadin 1
MEN	5	3	76	Deir ez zoe 2 - Quneitra 1
LEISH	50	3	1023	As Suqaylabiyah 1 - Al Mar`a 1 - Ar Raqqa 1

Response Activities

- Second quarterly meeting in 2015 with DLOs was held on June^{10th} till 14th , [for more details please see the extension.](#)
- Training course for Central Level Officers (CLOs) was held by WHO from Jordan office in between 6th-9th June, about updates the surveillance and data management of acute flaccid paralysis cases.
- Education session about EWARN in 75 secondary school students in Homs , Ghanto.
- MRFS provided Cholera RT for DLOs in: Aleppo, Idleb and Hama.
- Series of meetings with several NGOs (MRFS, SAMS, SEMA, UOSSM, MSF,BIHAR, Syria Charity ,FMA , Relief International) were held to improve the cooperation between the partners and improve relations with the sentinel sites which supported by them in Syria.

ABD=Acute Bloody
Diarrhea

AWD=Acute Watery
Diarrhea

AFP=Acute Flaccid
Paralysis

AJS=Acute Jaundice
Syndrome

SARI= Severe Acute
Respiratory Illness

UXD=Unexplained
Death

FUO=Fever Of Unknown
Origin

MEA=suspected Measles

MEN= suspected
Meningitis

UCE=Unexplained Cluster
Of Health Events

AD=Acute Diarrhea

ILI= Influenza-like
Illness