

Epidemiological Weekly Bulletin Syria EWARN

Highlights

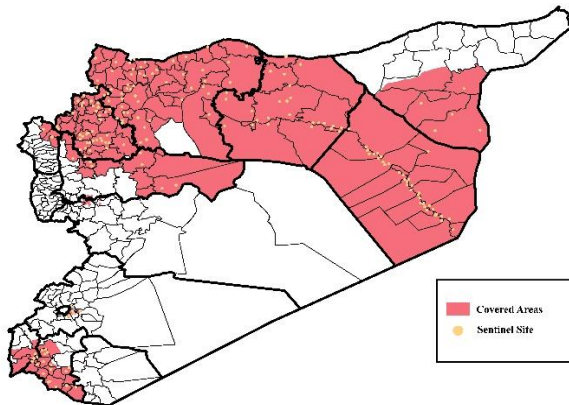
- Employment new staff in rural Aleppo – Ain Alarab district, Rural Damascus – Qataa and Az Zabadani.
- During Epi-week no 26 2015; 88% (439/386) of the health facilities across 12 Governorates provided surveillance data, 81% of reporting sites submitted the weekly reports on time.
- 2 new health facilities were added to the sentinel sites this week in Damascus and Qatana.
- The total number of consultations reported during the reporting week was 118808 (including 40% children under the age of five) compared to 116619 consultations during week 25, 2015.
- In Epi week 26, 5 AFP (Acute Flaccid Paralysis) cases were reported in Abu Kamal 2 –Jebel Saman 2 and Dar`a 1 . Investigation for 145 AFP cases were conducted since the beginning of 2015 up to date. See weekly Acute Flaccid Paralysis Surveillance report for more details.
- 32 suspected measles cases reported in this week, the highest alerts were reported in Ar Raqqa (7).
- The number the STF cases (Suspected Typhoid Fever), was about 2074cases, the highest alerts were reported in Harim (12)

- 655cases of AJS with Lab investigation for 5 cases in Jebel Saman , 3 positive HAV IgM .
- 160cases of SARI reported in Epi Week 26, the highest alerts were reported in Al Ma`ra (2).
- In Epi week 26: 8374 cases of Acute Diarrhea and 5390 cases of Influenza Like Illness were reported.
- Common disease reported under others were acute bronchiolitis (200 cases) , chicken pox (75 cases), Brucellosis (118 cases), Pertussis , Scabies, Lice ,mumps (7 new cases in Tadeef, Ra`ee and Harim) , Cutaneous leishmaniasis, and Hand, foot and mouth diseases. 2 confirmed T.B cases : one in Harin and another in Rural Damascus.
- 112 new cases of Pertussis were reported this week, 76 of them were Deir Hafir and Al Bab (68 % of the total) ,16 in Jebel Saman , 14 in Al Mayadin , 5 in Abu Kamal and 1 in Ra`ee .
- 38 new cases of Hand, foot and mouth disease were reported in Dar`a (Jizeh , Hrak) and Quneitra.
- 868 new cutaneous leishmaniasis cases reported this week, with no alerts for this week.

EWARN Coverage

EWARN covers 113 sub districts in 12 governorates

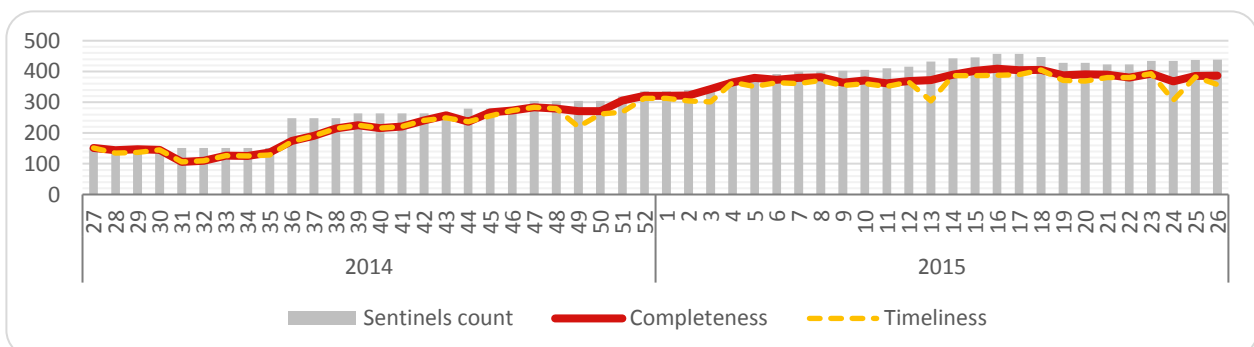
ACU  EWARN Coverage Map



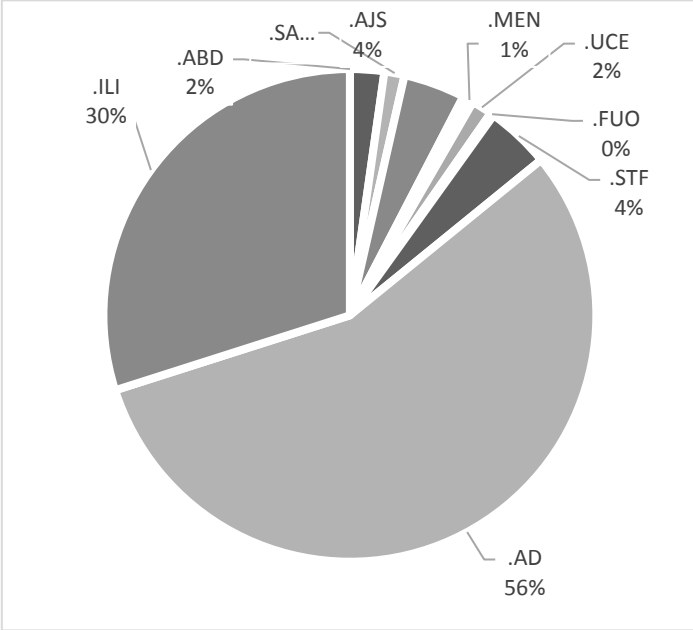
Number of Sentinel Sites and Total Number of Consultations

Governorate	# of sentinel	Reporting Sentinel	# of consultations
Al- Hasakeh	28	28	2790
Aleppo	138	133	33070
Ar-Raqqa	61	46	8026
Damascus	3	3	2669
Dar`a	22	15	8869
Deir-ez-Zor	61	46	14096
Hama	14	14	5722
Homs	11	10	1323
Idleb	80	71	32839
Latakia	3	3	961
Quneitra	5	4	1446
Rural Damascus	13	13	6277
Grand total	439	386	118088

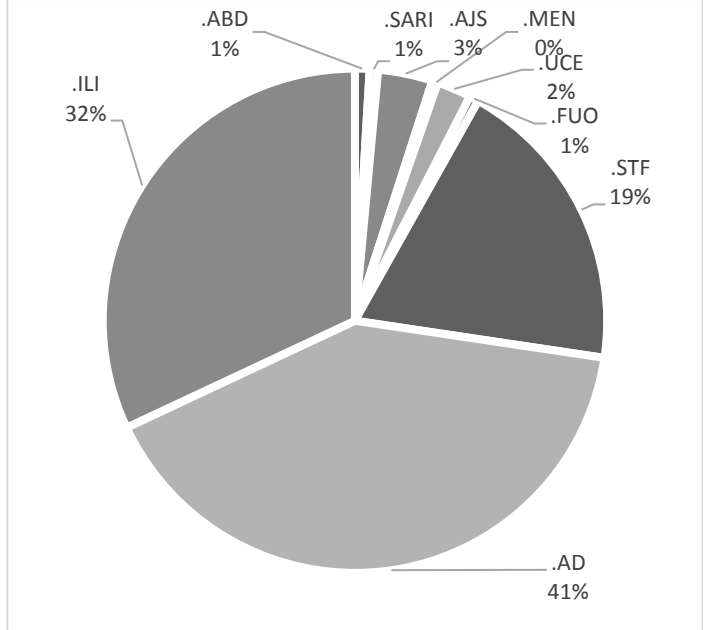
Completeness and Timeliness



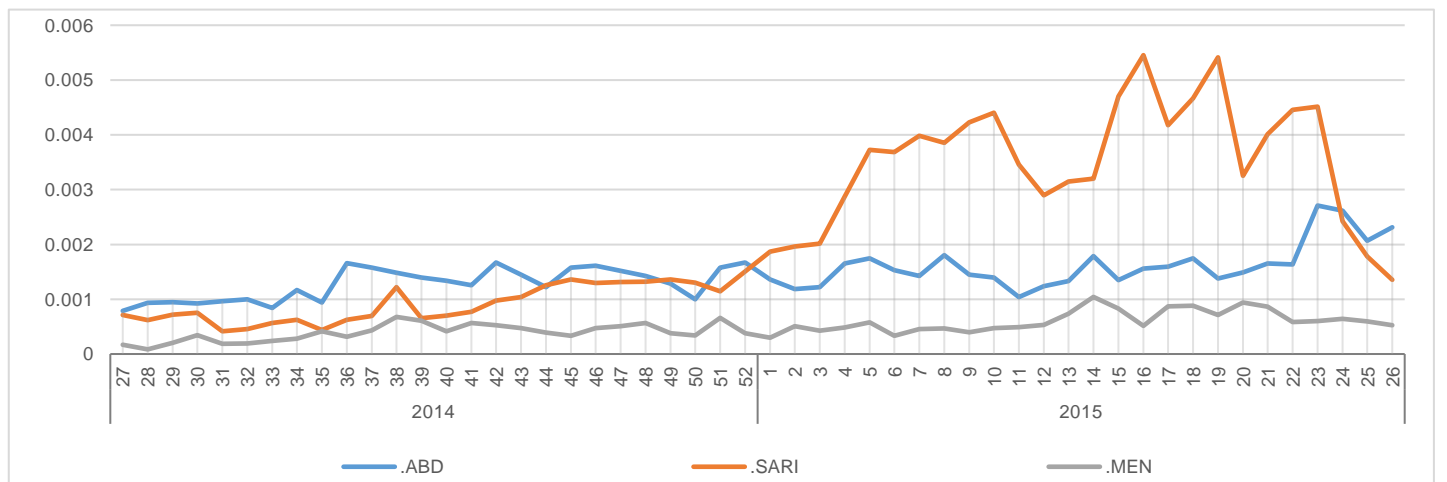
Percentage of EWARN Syndromes < 5Y



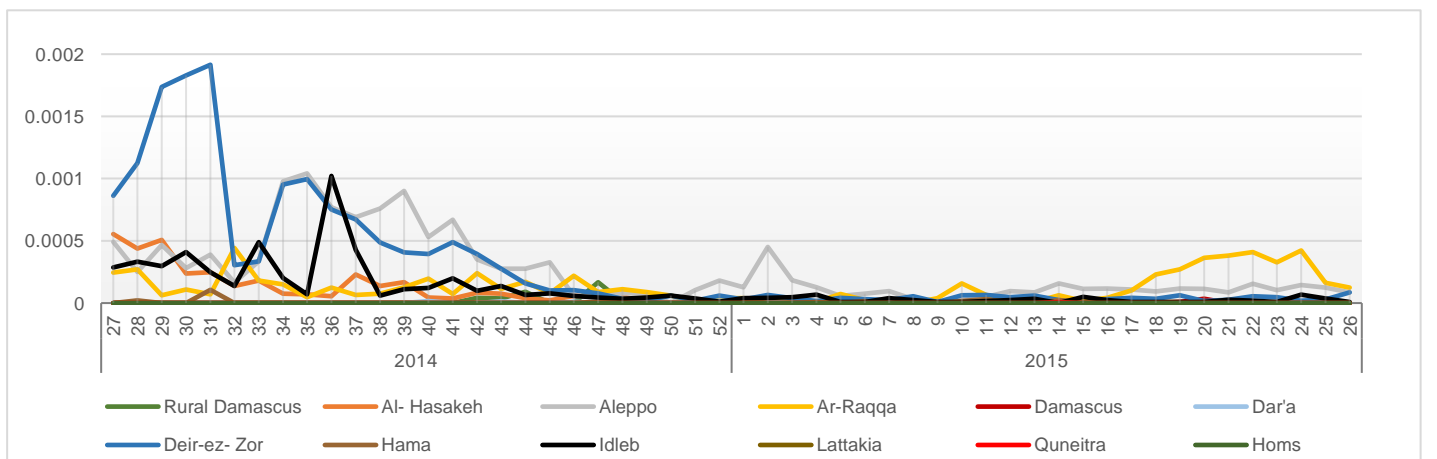
Percentage of EWARN Syndromes >=5Y



Trends for essential priority diseases in 12 governorates – Epi week 27-2014 to Epi week 26 - 2015

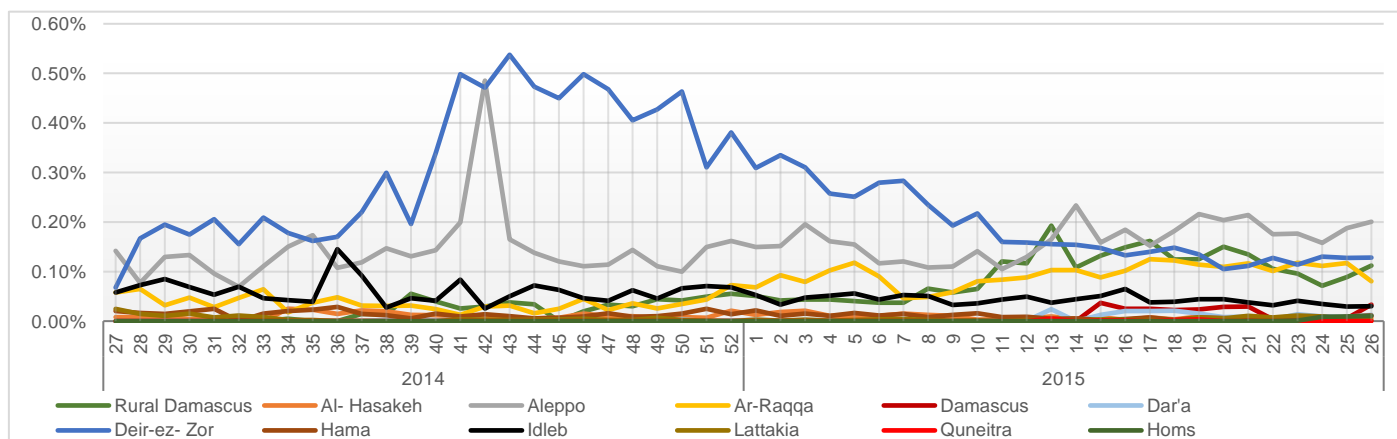


Proportional Morbidity of suspected Measles by Governorate, Epi Week 26 - 2015



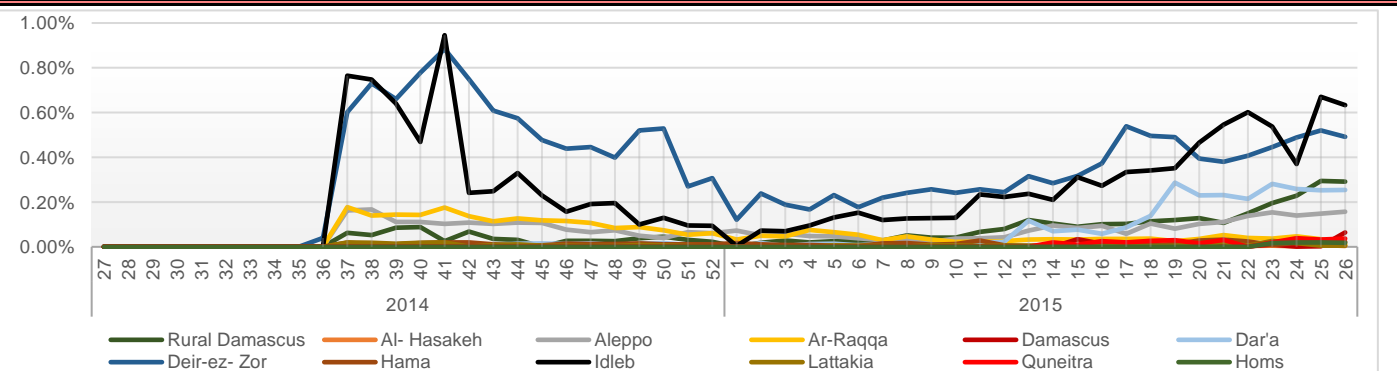
Proportional Morbidity of suspected **AJS** by Governorate, Epi Week

26 - 2015



Proportional Morbidity of suspected **STF** by Governorate, Epi Week

26 - 2015



Number of cases that EWARN observes by age & geographical area for Epi week

26 - 2015

Governorate	ABD	AWD	AJS	SARI	AFP	MEA	MEN	UCE	UXD	FUO	AD	ILI	LEISH	STF	OTHER	TOTAL
Al-Hasakeh	< 5	8	0	3	3	0	0	0	0	0	104	0	0	0	992	2790
	> 5	5	0	4	4	0	0	0	0	0	81	2	2	4	1578	
Aleppo	< 5	35	0	121	27	1	5	15	1	1	1180	788	83	34	11968	33070
	> 5	25	0	88	3	1	4	4	17	0	729	615	221	129	16953	
Ar-Raqqa	< 5	5	0	53	0	0	2	0	0	0	148	22	1	4	3068	8026
	> 5	3	0	31	0	0	11	8	0	0	141	10	14	8	4492	
Damascus	< 5	0	0	1	0	0	0	0	0	0	371	0	0	36	888	2669
	> 5	0	0	34	0	0	0	0	0	7	421	0	0	31	879	
Dar'a	< 5	13	0	9	5	0	0	0	32	0	149	9	0	84	3533	8869
	> 5	6	0	4	4	1	0	0	75	0	84	15	1	181	4664	
Deir-ez-Zor	< 5	99	0	104	28	2	9	19	66	0	1129	592	11	84	6250	14096
	> 5	34	0	30	11	0	0	3	44	0	525	377	38	429	4200	
Hama	< 5	4	0	1	13	0	0	0	0	0	373	163	32	0	1277	5722
	> 5	3	0	11	1	0	0	0	0	2	255	204	151	23	3209	
Homs	< 5	0	0	4	2	0	0	0	0	2	192	97	2	5	336	1323
	> 5	0	0	7	5	0	0	0	0	3	147	88	5	14	414	
Idleb	< 5	23	0	13	32	0	1	10	9	0	1015	862	67	69	8648	32840
	> 5	6	0	18	19	1	0	3	34	0	1204	1540	239	591	18424	
Lattakia	< 5	0	0	0	0	0	0	0	0	0	0	0	0	0	337	961
	> 5	0	0	2	0	0	0	0	0	0	0	0	1	6	615	
Quneitra	< 5	3	0	0	1	0	0	0	3	3	26	2	0	11	677	1446
	> 5	1	0	0	0	0	0	0	12	3	6	3	0	27	668	
Rural Damascus	< 5	0	0	34	1	0	0	0	3	0	56	1	0	31	1310	6277
	> 5	0	0	83	1	0	0	0	15	0	38	0	0	273	4424	
TOTAL	< 5	190	0	343	112	3	17	44	114	4	4743	2536	196	358	39284	118088
	> 5	83	0	312	48	2	15	18	197	3	3631	2854	672	1716	60520	
Grand total		273	0	655	160	5	32	62	311	7	8374	5390	868	2074	99804	

Disease	Alert threshold	#HF reach threshold	# Cases	The most affected Communities-Districts
AFP	1	5	5	Jebel Saman 2 - Abu Kamal 2 - Dar`a 1
MEA	1	22	32	Ar Raqqa 7 - Menbij 5 - Abu Kamal 4 -Al Mayadin 2 - Al Bab 1 - AthThwarah 1 - Jarablus 1 - Idleb 1
AJS	5	43	655	Ar Raqqa 9 - Rural Damascus 6- Mayadin 6 - Menbij 6 - Afrin 4 - Jebel Saman 2 - Al Bab 2 - Damascus 2- Duma 1 - Deir ez zor 1 - Qatana 1 - Rastan 1 - Abu Kamal 1 - Azaz 1
STF	5	85	2074	Harim 12 - Al Mayadin 10 -Deir ez zor 10 - Abu Kamal 9 -Rural Damascus 8 - Jebel Saman 8 - Ma`ra 7- Izra` 4 -Jisr AshShugur 3 - Quneitra 3 -AsSanamayn 2- As Salamiyeh 2 - Dar`a 1 - Idleb 1 - Duma 1- Azaz 1 - Menbij 1 - Damascus 1 - Qatana 1
ABD	5	16	273	Al Mayadin 4 - Abu Kamal 3 - Azaz 3 - Deir ez zor 2 - Jebel Saman 1 - Dar`a 1 -Harim 1 - Hasakeh 1
SARI	5	6	160	Ma`ra 2 - Al Bab 1 - Jisr AshShugur 1- Harim 1 - Izra` 1
MEN	5	0	62	
LEISH	50	0	868	

Response Activities

Detailed assessment for water borne disease in Idleb governorate, [for more details please see the extension.](#)

- Training for MSF health workers staff in Atmeh about EWARN.
- Distribution of prescriptions for EWARN in northern rural of Homs.
- MRFS provided Cholera RT for DLOs in: Aleppo, Idleb and Hama.

ABD=Acute Bloody Diarrhea

AWD=Acute Watery Diarrhea

AFP=Acute Flaccid Paralysis

AJS=Acute Jaundice Syndrome

SARI= Severe Acute Respiratory Illness

UXD=Unexplained Death

FUO=Fever Of Unknown Origin

MEA=suspected Measles

MEN= suspected Meningitis

UCE=Unexplained Cluster Of Health Events

AD=Acute Diarrhea

ILI= Influenza-like Illness