

Epidemiological Weekly Bulletin
Syria EWARN

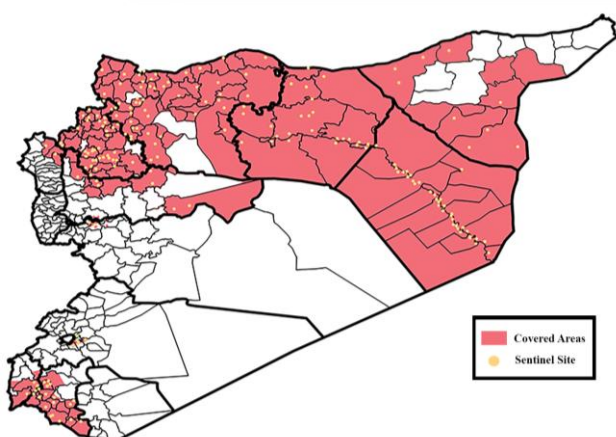
Highlights

- FLOs training in Dar`a and Quneitra was held by DLOs on July 31th.
- Preparations for ERC next week.
- During Epi-week no 31 2015; 95% (443/419) of the health facilities across 12 Governorates provided surveillance data, 89% of reporting sites submitted the weekly reports on time.
- The total number of consultations reported during the reporting week was 133477 (including 40% children under the age of five) compared to 117474 consultations during week 30, 2015.
- In Epi week 31, 8 AFP (Acute Flaccid Paralysis) cases were reported in : Ma`ra 2 , As Suqaylabiyah 2 , Bab 1 , Ar Raqqa 1 , Jabal Saman 1 and Rastan 1 . Investigation for 169 AFP cases were conducted since the beginning of 2015 up to date. See weekly Acute Flaccid Paralysis Surveillance report for more details.
- 53 suspected measles cases reported in this week, the highest alerts were reported in Menbij (7).

- The number the STF cases (Suspected Typhoid Fever), was about 2633 cases, the highest alerts were reported in Harim (15).
- 748 cases of AJS , Lab investigation for 2 case in south rural in Aleppo one of them is positive.
- 167 cases of SARI reported in Epi Week 31, the highest alerts were reported in Deir ez zor (3).
- In Epi week 31 : 11909 cases of Acute Diarrhea and 5322 cases of Influenza Like Illness were reported.
- Common disease reported under others were acute bronchiolitis (92 cases), chicken pox (101 cases), Brucellosis (129 cases), Pertussis , Scabies, Lice ,mumps , Cutaneous leishmaniasis, impetigo and Hand, foot and mouth diseases. 1 confirmed T.B case in Idleb.
- 52 new cases of Pertussis were reported this week, 31 of them were in Deir Hafir , 7 in A Bab and the remain were in Al Mayadin , Abu Kamal and Jebel Saman.
- 1002 new cutaneous leishmaniasis cases reported this week, 2 alerts reported in 1 district: Mar`a.

EWARN Coverage

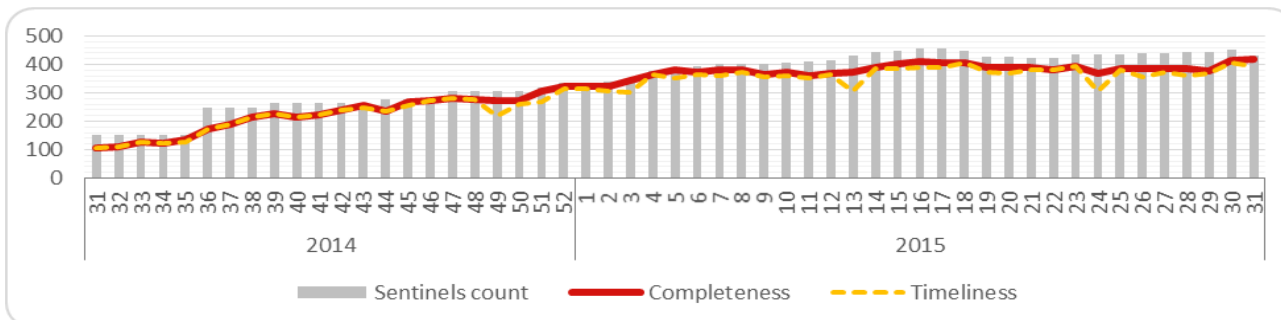
EWARN covers 113 sub districts in 12 governorates



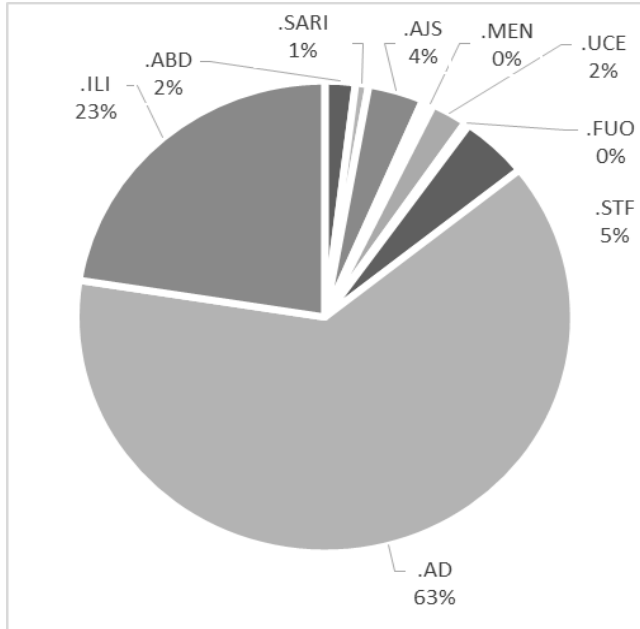
Number of Sentinel Sites and Total Number of Consultations

Governorate	# of sentinel	Reporting Sentinel	# of consultations	
Al- Hasakeh	28	28	100%	3080
Aleppo	145	143	103%	35595
Ar-Raqqa	51	62	102%	10196
Damascus	3	0	0%	0
Dar'a	22	21	95%	11672
Deir-ez-Zor	53	52	85%	15940
Hama	14	11	79%	4994
Homs	11	10	91%	6144
Idleb	81	73	90%	37000
Lattakia	3	2	67%	1493
Quneitra	5	4	80%	222
Rural Damascus	15	13	87%	7141
Grand total	431	419	95%	133477

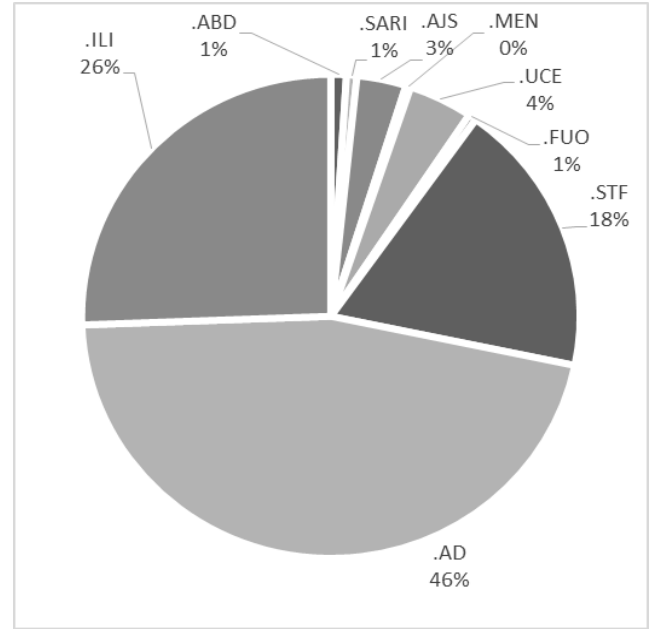
Completeness and Timeliness



Percentage of EWARN Syndromes < 5Y

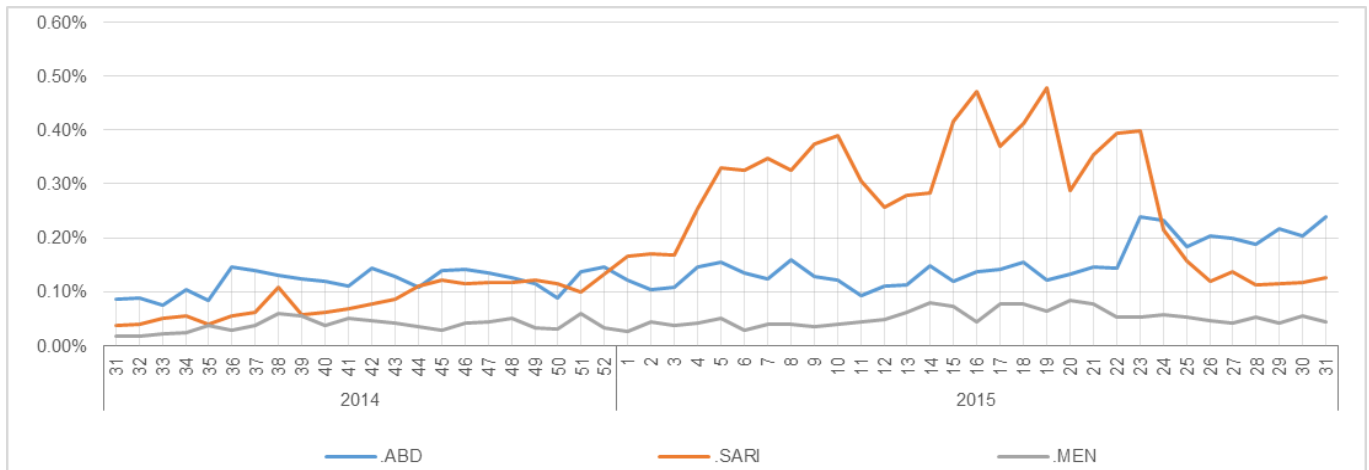


Percentage of EWARN Syndromes >=5Y



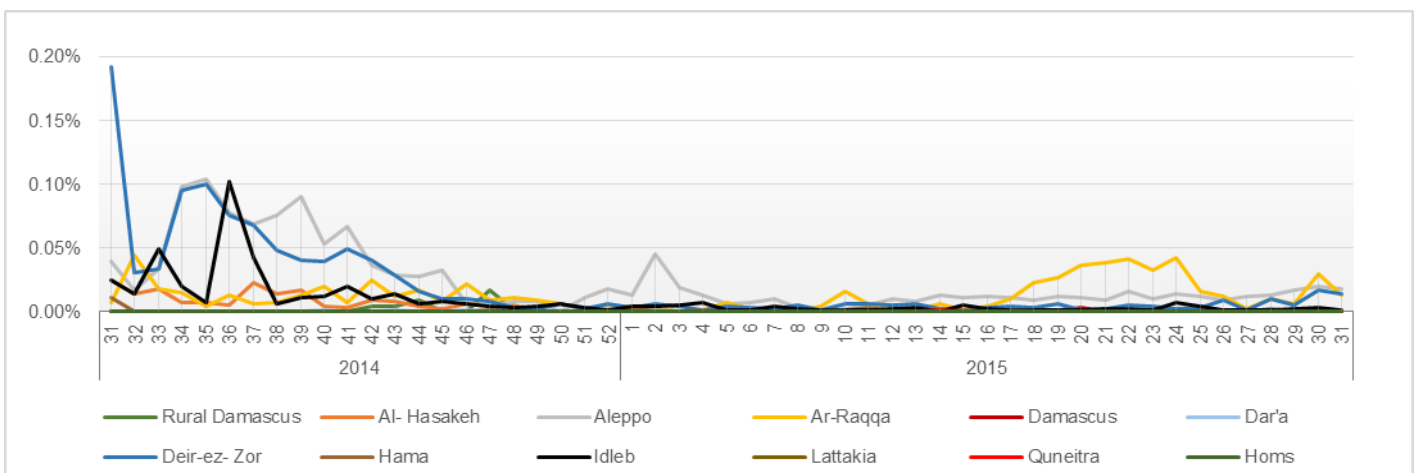
Trends for essential priority diseases in 12 governorates – Epi week 31-2014 to Epi week 31 - 2015

31 - 2015



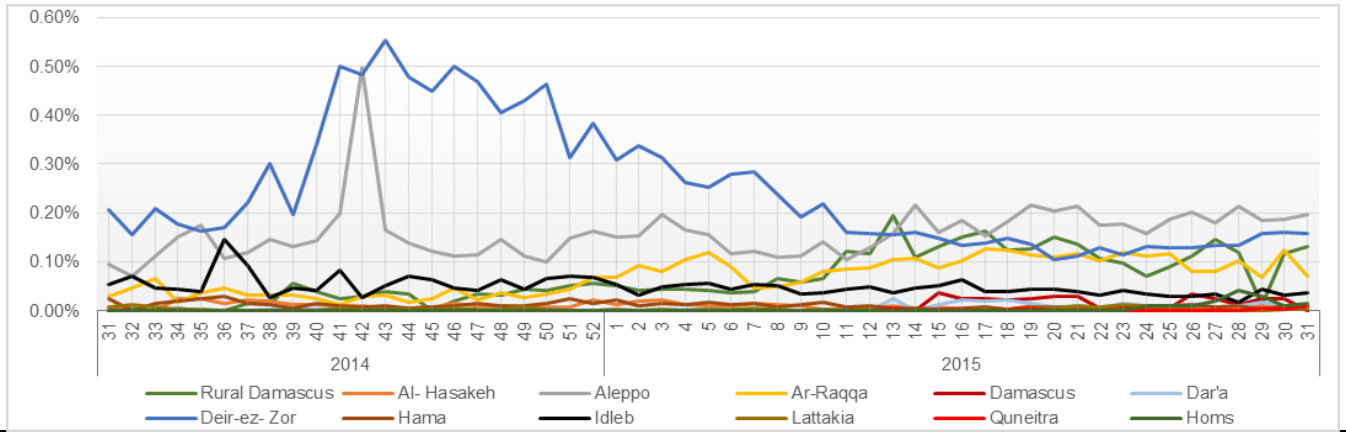
Proportional Morbidity of suspected Measles by Governorate, Epi Week

31 - 2015



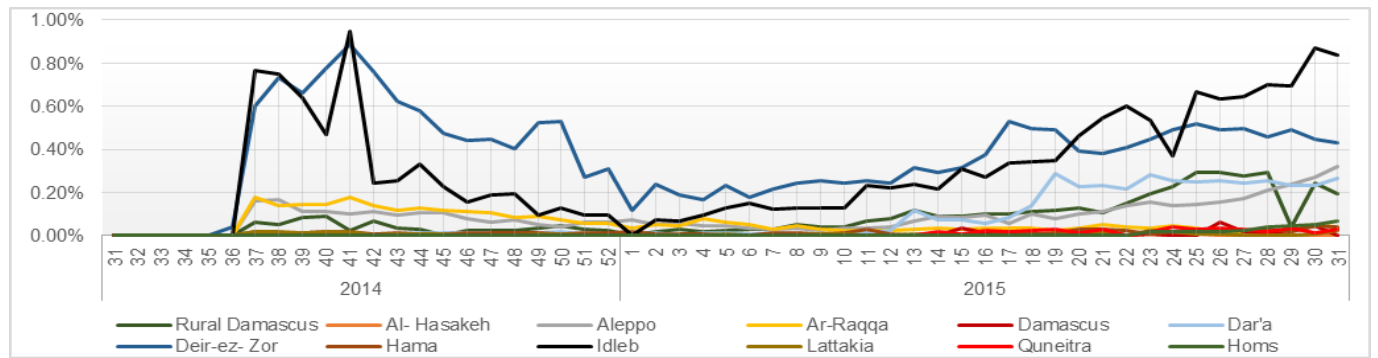
Proportional Morbidity of suspected AJS by Governorate, Epi Week

31 - 2015



Proportional Morbidity of suspected STF by Governorate, Epi Week

31 - 2015



Number of cases that EWARN observes by age & geographical area for Epi week

31 - 2015

Governorate	ABD	AWD	AJS	SARI	AFP	MEA	MEN	UCE	UXD	FUO	AD	ILI	LEISH	STF	OTHER	TOTAL	
Al- Hasakeh	< 5	5	0	8	4	0	0	0	0	0	122	0	4	0	1136	3080	
	> 5	4	0	7	6	0	0	0	0	0	57	0	10	6	1711		
Aleppo	< 5	42	0	131	7	1	13	10	43	2	9	1711	581	94	84	13088	35595
	> 5	26	0	98	11	1	8	7	52	1	13	1235	530	204	290	17303	
Ar-Raqqa	< 5	8	0	52	0	1	8	5	0	0	2	345	15	0	16	3729	10196
	> 5	14	0	29	2	0	7	7	0	0	1	182	15	6	33	5719	
Dar'a	< 5	5	0	3	4	0	0	4	48	0	0	397	10	0	92	4482	11672
	> 5	5	0	7	10	0	0	2	81	0	0	346	8	2	217	5949	
Deir-ez-Zor	< 5	121	0	115	46	0	12	17	58	0	6	1767	514	11	76	6080	15940
	> 5	56	0	69	24	0	4	1	138	0	14	1305	407	38	425	4636	
Hama	< 5	2	0	0	1	1	0	0	0	0	3	226	59	45	0	1081	4994
	> 5	0	0	2	3	1	0	0	0	0	8	152	95	88	51	3176	
Homs	< 5	3	0	4	13	1	0	0	61	0	0	306	164	0	4	1267	6144
	> 5	5	0	13	7	0	0	1	77	0	0	276	169	2	78	3693	
Idleb	< 5	15	0	13	12	2	1	5	23	0	5	1477	944	94	140	9322	37000
	> 5	9	0	28	14	0	0	0	114	0	20	1799	1795	378	831	19959	
Lattakia	< 5	0	0	0	0	0	0	0	0	0	0	14	0	0	0	316	1493
	> 5	0	0	6	0	0	0	0	0	0	0	32	5	0	30	1090	
Quneitra	< 5	0	0	0	0	0	0	0	4	0	1	20	0	0	5	47	222
	> 5	0	0	11	0	0	0	0	11	0	0	57	0	0	27	39	
Rural Damascus	< 5	0	0	42	0	0	0	0	4	0	2	45	1	11	35	1455	7141
	> 5	0	0	110	3	0	0	0	22	10	5	38	10	15	193	5140	
TOTAL	< 5	201	0	368	87	6	34	41	241	2	28	6430	2288	259	452	42003	133477
	> 5	119	0	380	80	2	19	18	495	11	61	5479	3034	743	2181	68415	
Grand total		320	0	748	167	8	53	59	736	13	89	11909	5322	1002	2633	110418	

Disease	Alert threshold	#HF reach threshold	# Cases	The most affected Communities-Districts
AFP	1	8	8	Ma`ra 2 - As Suqaylabiyah 2 - Bab 1 - Ar Raqqa 1 - Jabal Saman 1 - Rastan 1
MEA	1	30	53	Menbij 7 - Abu Kamal 6 - Ar Raqqa 5 -AthThwarah 4 - Ain Alarab 4 - Deir ez zoor 3 - Harim 1
AJS	5	44	748	Menbij 10 - Mayadin 7 -Rural Damascus 5 - Deir ez zor 5 - Jebel Saman 4 - Ar Raqqa 3 - Az Zabadani 2 - Afrin 1 - Al Bab 1 - Duma 1 - Qatana 1 - Dar`a 1 -Azaz 1 - Hafa 1 - Quneitra 1
STF	5	130	2633	Harim 15 - Jebel Saman 14 - Deir ez zor 12- Abu Kamal 10- Mayadin 9-Rural Damascus 9- Mar`a 9- Jisr AshShugur 8 - Dar`a 8- As Salamiyeh 5 - Idleb 4 - Izra` 3- Rastan 3 - Raqqa 3- Ariha 3 -As Sanamayn 3- Quneitra 2 - Azaz 1 - Duma 1 - Lattakia 1- Hafa 1 - Ain Alarab 1 - Qatana 1 -Homs 1
ABD	5	18	320	Deir ez zor 5 - Mayadin 5 - Abu Kamal 4 - Jebel Saman 2 -Homs 1 - Izra` 1
SARI	5	7	167	Deir ez zor 3 - Homs 1 - Abu Kamal 1- Izra` 1 - Mar`a 1
MEN	5	0	59	
LEISH	50	2	1002	Ma`ra 2

Response Activities

❖ FLOs training was held by CLOs for FLOs in Lattakia on July 20th and in Hama , Idleb and Aleppo on July 22th The training included :

- 1) EWARN guidelines updates
- 2) Diphtheria and Neonatal Tetanus surveillance
- 3) Case definition review.
- 4) Outbreak investigation and response
- 5) Data collection and analysis
- 6) Rapid diagnostic test of Cholera and measles cases sampling
- 7) Health mapping updates
- 8) Organizing the relationship with NGOs .
- 9) Distribution of laboratory epidemiological surveillance guide.
- 10) The importance of EWARN materials (registers – posters).

ABD=Acute Bloody Diarrhea

AWD=Acute Watery Diarrhea

AFP=Acute Flaccid Paralysis

AJS=Acute Jaundice Syndrome

SARI= Severe Acute Respiratory Illness

UXD=Unexplained Death

FUO=Fever Of Unknown Origin

MEA=suspected Measles

MEN= suspected Meningitis

UCE=Unexplained Cluster Of Health Events

AD=Acute Diarrhea

ILI= Influenza-like Illness