

**Epidemiological Weekly Bulletin  
 Syria EWARN**

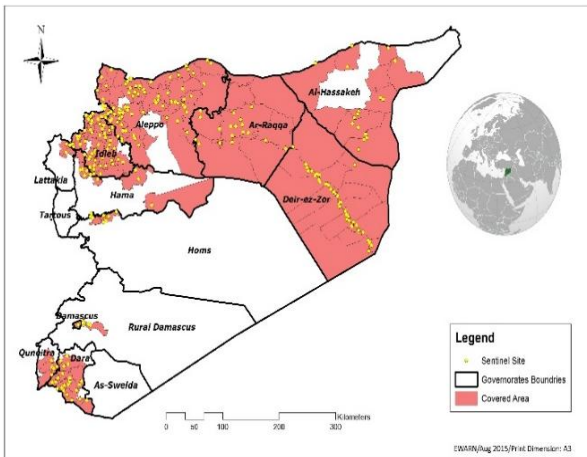
**Highlights**

- FLOs training in Hasakah governorate in : Amuda , Malika , Qamishli , Tal Tamer and Darbasiya districts .
- 32 health facilities were added to the sentinel sites this week : 14 in Hasakeh , 14 in Idleb , 2 in Deir ez zor and 2 in Aleppo.
- During Epi-week no 34 2015; 97% (475/459) of the health facilities across 12 Governorates provided surveillance data , 92% of reporting sites submitted the weekly reports on time.
- The total number of consultations reported during the reporting week was 145572 (including 40% children under the age of five) compared to 138233 consultations during week 33, 2015.
- In Epi week 34, 2 AFP (Acute Flaccid Paralysis) cases were reported in : Mar'a and Idleb . Investigation for 185 AFP cases were conducted since the beginning of 2015 up to date. See weekly Acute Flaccid Paralysis Surveillance report for more details.
- 220 suspected measles cases reported in this week, the highest alerts were reported in Menbij (12). Lab investigation for 4 suspected cases in Idleb and Aleppo with 2 positive results for IgM.
- The number the STF cases (Suspected Typhoid Fever), was about 3641 cases, the highest alerts were reported in Deir ez zor (19).
- 571 cases of SARI reported in Epi Week 34, the highest alerts were reported in Qamishli (4).

- In Epi week 34 : 14214 cases of Acute Diarrhea and 6318 cases of Influenza Like Illness were reported.
- Common disease reported under others were acute bronchiolitis (139 cases), chicken pox (90 cases), Brucellosis (75 cases), Pertussis (18) , Scabies, Lice ,mumps , Cutaneous leishmaniasis, acute tonsillitis , impetigo and Hand, foot and mouth diseases (28) . 3 confirmed T.B cases were reported in both Afrin and Harim . Death of one female in Abu Kamal as a result of T.B which has been reported in Epi week 32.
- 1106 new cutaneous leishmaniasis cases reported this week, with one alert in Al Mar'a district .
- One case of confirmed visceral leishmaniasis was reported in Daret Azze – Aleppo, he is male child 8 years old, the signs lasted for 9 months. Bone marrow examination was positive whereas the RT was negative. The proper medication was provided by MENTOR initiative. • One death due to acute meningitis was reported in Basira - Deir ez zor , in female 22 years old , started with headache in 15<sup>th</sup> of August , meningeal signs appeared the next day ,head CT and lumbar puncture (purulent meningitis) were performed with no ability for culture . The patient treated with antibiotic. Convulsion and neurological depression developed and died in 18<sup>th</sup> of August. No purpuric or petechial rash appeared before death. However, the cases of acute meningitis in Deir ez zor has been increased in the last period, at the rate of 25 per week.
- 919 cases of AIS , Lab investigation for 6 cases in Aleppo and Idleb with positive result of HAV Ab in 4 cases.

**EWARN Coverage**

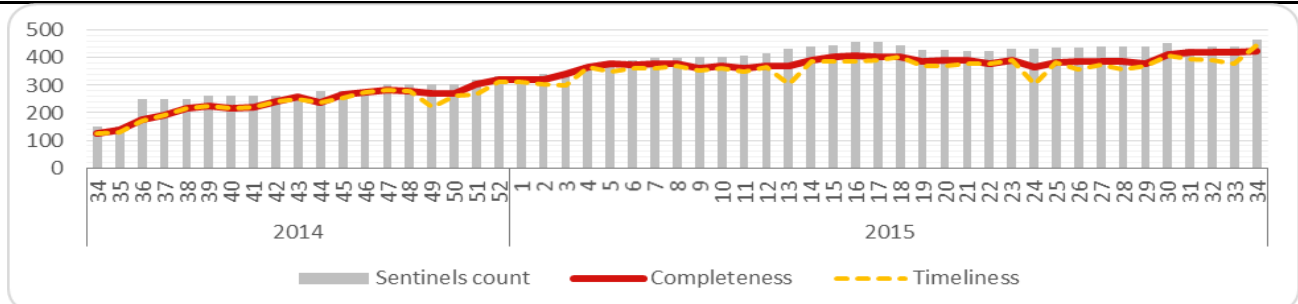
EWARN covers 103 sub districts and 35 districts in 12 governorates.



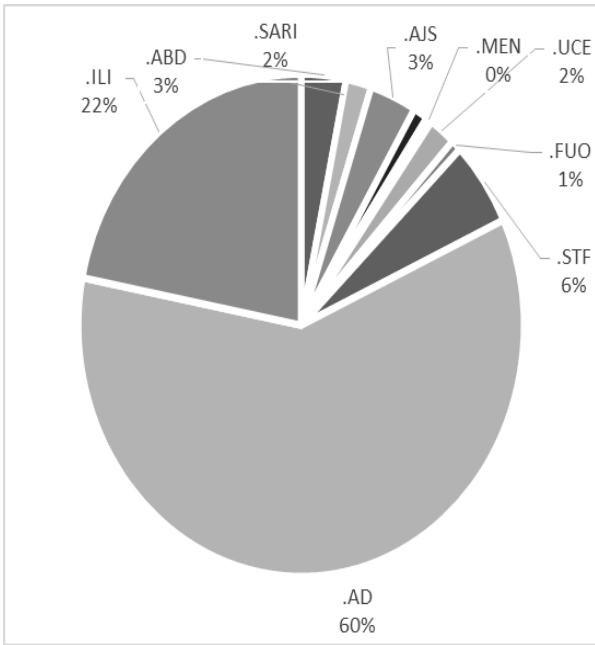
**Number of Sentinel Sites and Total Number of Consultations**

Governorate	# of sentinel	Reporting Sentinel	# of consultations
Al- Hasakeh	42	42	6579
Aleppo	148	148	38610
Ar-Raqqa	62	60	10338
Damascus	3	3	828
Dar'a	22	19	9242
Deir-ez-Zor	55	54	15817
Hama	14	12	5937
Homs	11	10	5241
Idleb	95	92	44132
Lattakia	3	2	1161
Quneitra	5	4	1075
Rural Damascus	15	13	6612
<b>Grand total</b>	<b>475</b>	<b>459</b>	<b>145572</b>

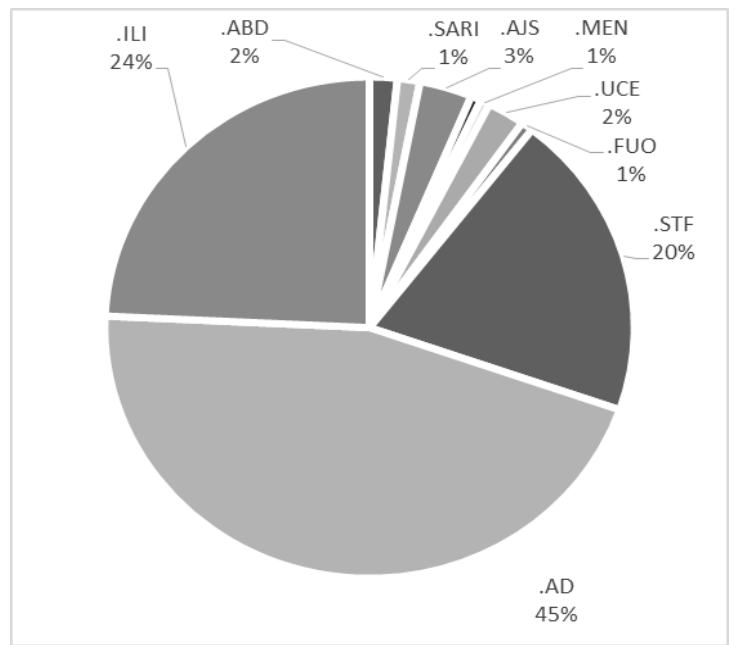
**Completeness and Timeliness**



**Percentage of EWARN Syndromes < 5Y**

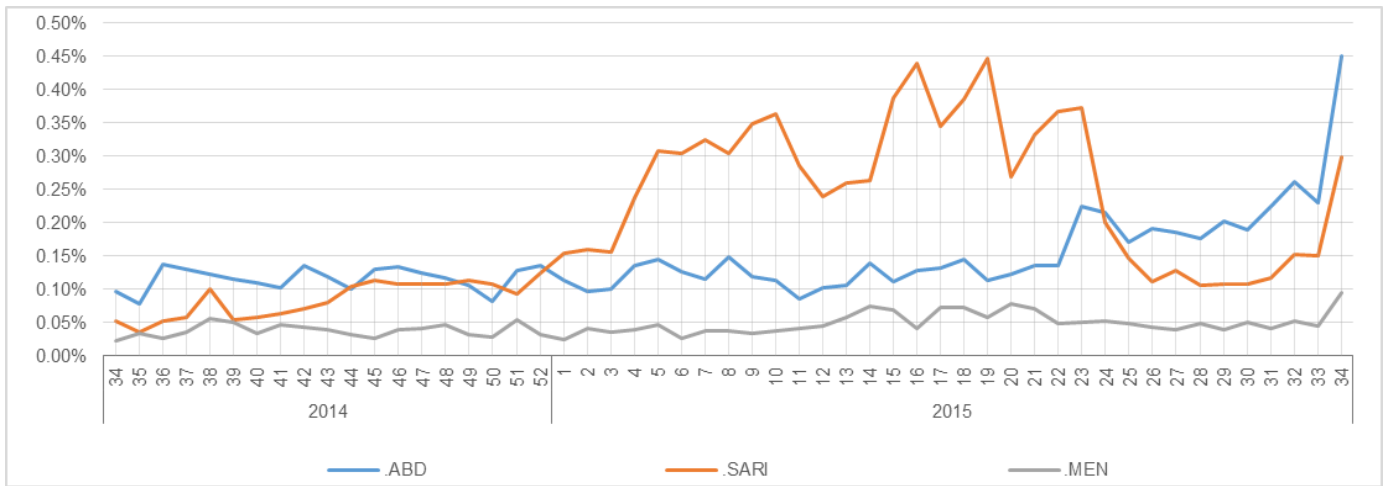


**Percentage of EWARN Syndromes >=5Y**



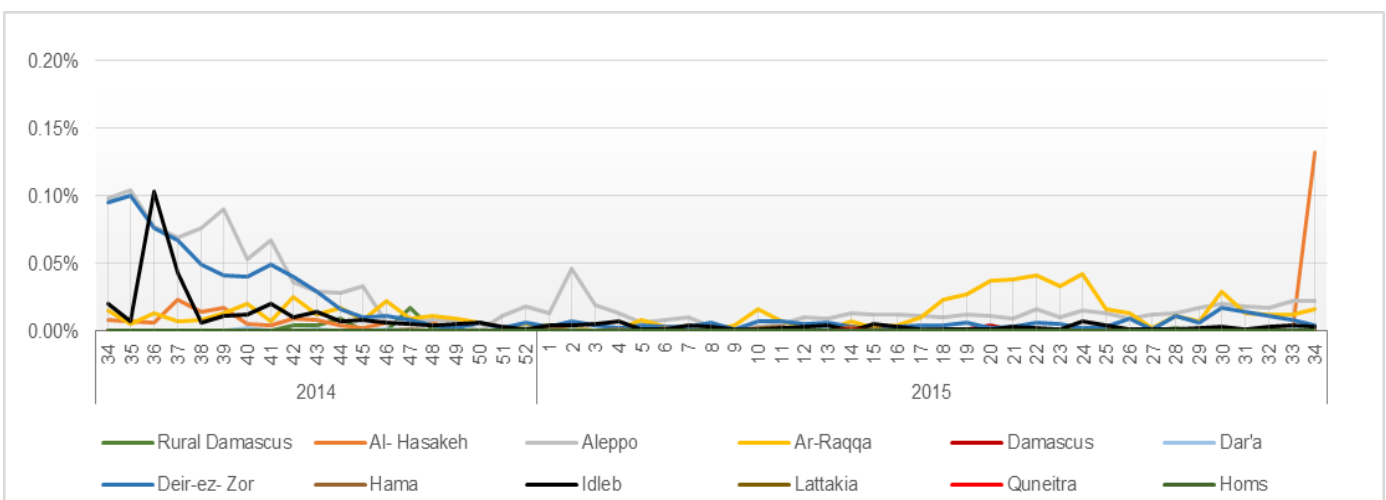
**Trends for essential priority diseases in 12 governorates – Epi week 33-2014 to Epi week**

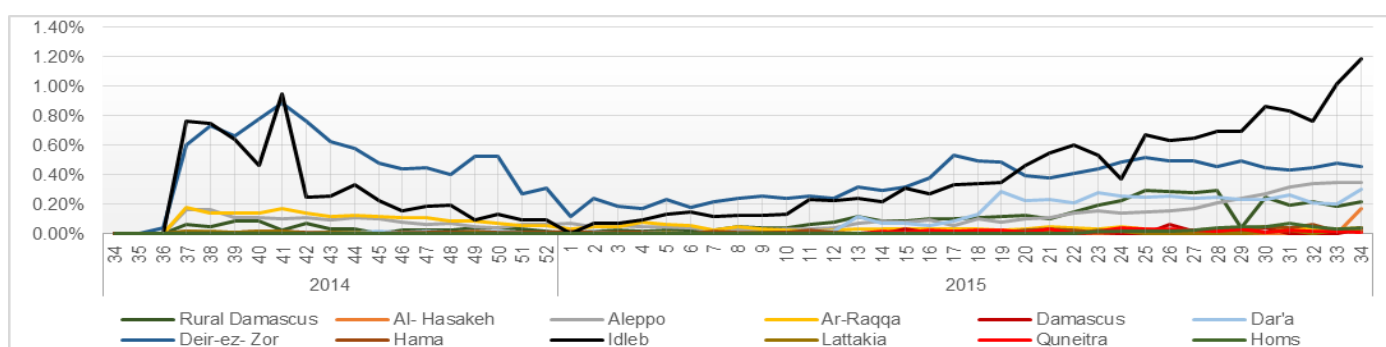
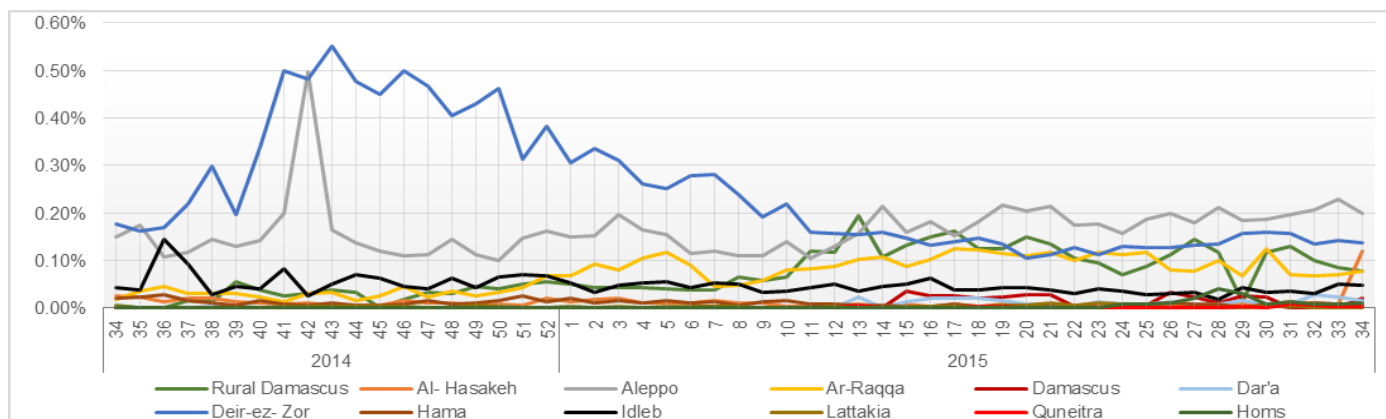
**34 - 2015**



**Proportional Morbidity of suspected Measles by Governorate, Epi Week**

**34 - 2015**





Governorate	Age Group	ABD	AWD	AJS	SARI	AFP	MEA	MEN	UCE	UXD	FUO	AD	ILI	LEISH	STF	OTHER	TOTAL
Al-Hasakeh	< 5	172	0	45	92	0	95	19	71	4	34	711	252	71	58	1431	6579
	> 5	143	0	104	110	0	67	39	62	1	20	414	157	161	156	2090	
Aleppo	< 5	49	0	141	16	0	17	12	63	1	10	2107	612	93	136	13840	38610
	> 5	32	0	105	15	0	10	6	72	0	8	1741	729	209	290	18296	
Ar-Raqqa	< 5	14	0	62	0	0	9	3	0	0	17	367	10	1	11	3822	10338
	> 5	18	0	33	0	0	11	13	0	1	9	251	9	6	37	5634	
Damascus	< 5	0	0	16	0	0	0	0	0	0	5	0	1	0	24	359	828
	> 5	0	0	9	0	0	0	0	0	0	10	0	3	0	21	380	
Dar'a	< 5	10	0	10	5	0	0	1	60	0	2	244	21	0	105	2880	9242
	> 5	6	0	9	7	0	0	2	105	0	0	404	33	3	269	5066	
Deir-ez-Zor	< 5	128	0	109	40	0	4	11	1	0	5	1858	589	4	110	5593	15817
	> 5	31	0	60	30	0	1	20	0	0	10	1417	472	23	447	4854	
Hama	< 5	3	0	1	14	0	0	0	0	0	0	202	70	13	1	1387	5937
	> 5	1	0	6	2	0	0	1	0	0	3	222	78	57	50	3826	
Homs	< 5	3	0	8	30	0	0	1	39	0	0	346	203	0	1	1038	5241
	> 5	1	0	7	15	0	0	0	36	0	0	260	167	0	46	3040	
Idleb	< 5	25	0	39	116	1	5	8	41	0	11	1626	1005	121	209	11603	44132
	> 5	12	0	53	74	1	1	2	81	0	35	1873	1862	320	1361	23647	
Lattakia	< 5	0	0	0	0	0	0	0	0	0	0	19	12	0	2	266	1161
	> 5	1	0	2	0	0	0	0	0	0	0	38	17	0	20	784	
Quneitra	< 5	0	0	0	0	0	0	0	2	0	1	23	0	0	1	445	1075
	> 5	0	0	3	0	0	0	0	4	0	5	42	10	0	13	526	
Rural Damascus	< 5	0	0	11	3	0	0	0	3	2	7	39	3	14	48	1469	6612
	> 5	0	0	86	2	0	0	2	6	6	14	10	3	10	225	4649	
TOTAL	< 5	404	0	442	316	1	130	55	280	7	92	7542	2778	317	706	44133	145572
	> 5	245	0	477	255	1	90	85	366	8	114	6672	3540	789	2935	72792	
Grand total		649	0	919	571	2	220	140	646	15	206	14214	6318	1106	3641	116925	

Disease	Alert threshold	#HF reach threshold	# Cases	The most affected Communities-Districts
AFP	1	2	2	Mar`a 1 - Idleb 1
MEA	1	52	220	Menbij 12 - Ar Raqqa 7 - Qamishli 5 - AthThwarah 5 - Ras Alain 4 - Jebel Saman 3 - Abu Kamal 3 - Malika 3 - Jisr AshShgur 2 - Harim 1 - Idleb 2 - Bab 1 - Ma`ra 1 - Jarablus 1 - Mayadin 1 - Hsakeh 1
AJS	5	65	919	Menbij 9 - Deir ez zor 8 - Mayadin 6 - Jebel Saman 5 - Qamishli 5 - Rural Damascus 4 - Jisr AshShgur 4 - Bab 3 - Ar Raqqa 2 - Afrin 2 - Abu Kamal 2 - Idleb 2 - Saraqab 2 - Ras Al Ain 1 - Azaz 1 - Duma 1 - Dar`a 1 - Jarablus 1 - Hasakeh 1 - Harim 1 - Ath Thwara 1 - Damascus 1 - Malika 1
STF	5	154	3641	Deir ez zor 19 -Jebel Saman 18 - Harim 16 - Jisr AshShugur 12 - Ma`ra 11 - Idleb 10 -Mayadin 9 - Dar`a 7 -Abu Kamal 7 - Rural Damascus 7 - Qamishli 5- Rastan 4 - Izra` 4 - Malika 3 - Ras Alain 3 - As Salamiyeh 3 -As Sanamayn 2- Ariha 2 - Bab 2 -Damascus 1 - Duma 1 - Hafa 1 - Qatana 1 - Raqqa 1- Hasakah 1 - Lattakia 1- Ain Alarab 1 - Quneitra 1 - Saraqab 1
ABD	5	35	649	Ras Al Ain 5 - Qamishli 5 - Mayadin 4 - Abu Kamal 3 - Deir ez zor 3 - Al Malika 3 - Hasakeh 2 - Ar Raqqa 2 - Jebel Saman 2 - Izra` 1 - Dar`a1 - Bab 1 - Azaz 1 - Ain Alarab 1 - Saraqab 1
SARI	5	22	571	Qamishli 4- Deir ez zor 3 -Ras Alain 3 - Homs 2 - Mar`a 2 -Idleb 2 - Izra` 1 - As Salamiyeh 1- Ain Alarab 1 -Hasakeh 1- Malika 1 - Jisr AsuShugur 1
MEN	5	5	140	Deir ez zor 2 - Qamishli 1 - Malika 1
LEISH	50	1	1106	Ma`ra 1

### Response Activities

#### 1. EWARN team has been visited Al Amal camp in Quneitra , in coordination with the camp supervisor ( Injaz institute ) :

- The camp included 3000 population and 75 families .
- Health services are available only in Ashsheh medical point near the camp . Although the provided services are insufficient.
- Water source is the river, whereas most the people in the camp depend on tanks.
- High incidence of Lice and Scabies infection
- 7 cases of acute bloody diarrhea and some cases of hand , foot and mouth disease were reported in Epi week 34.

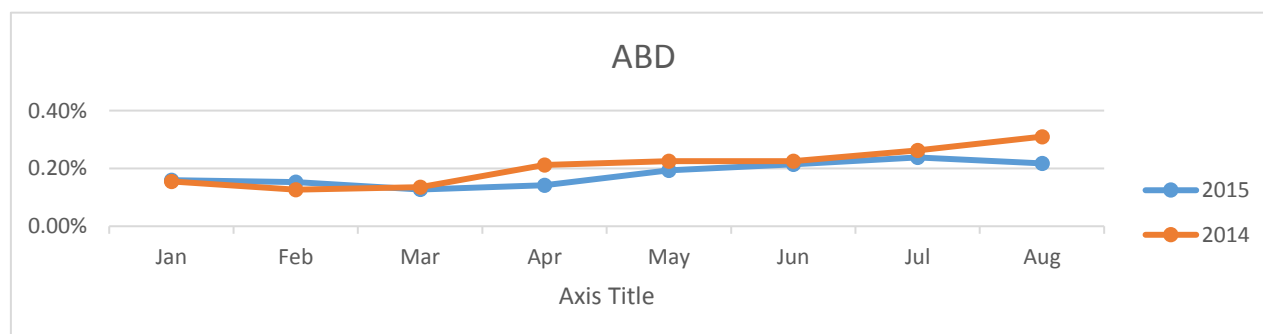
#### \*The agreement with Injaz institute was as the follows :

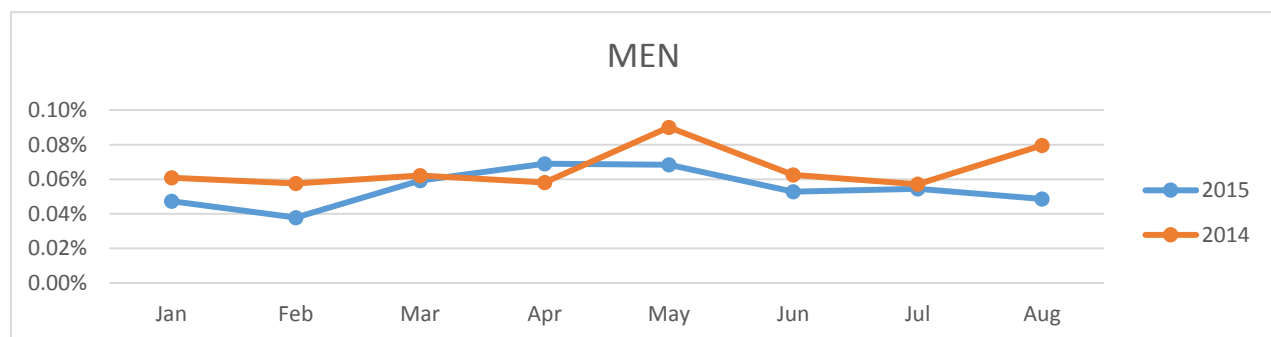
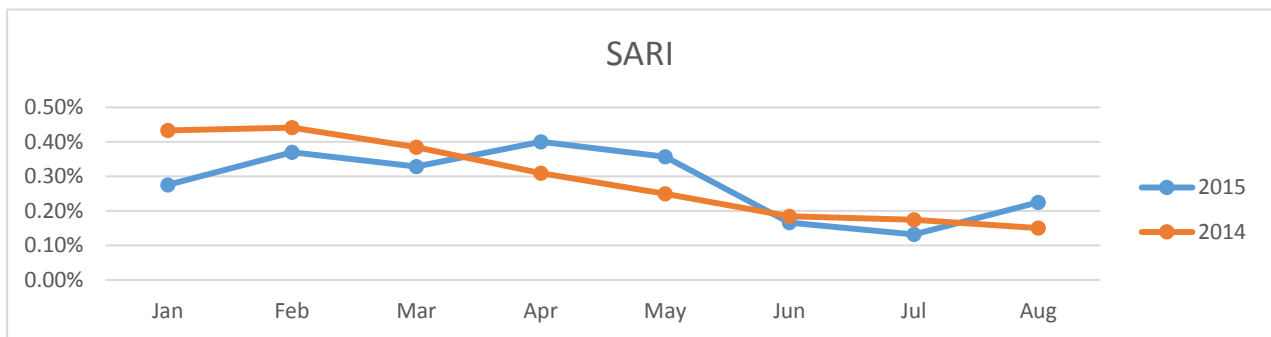
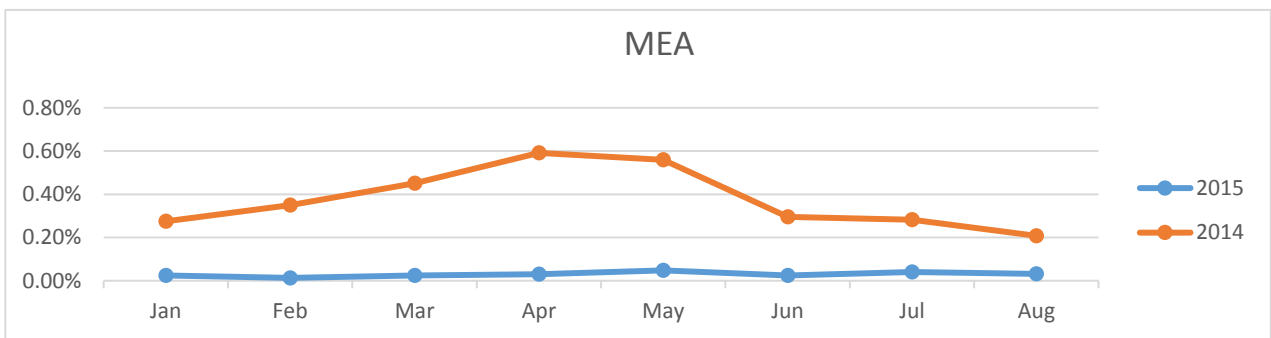
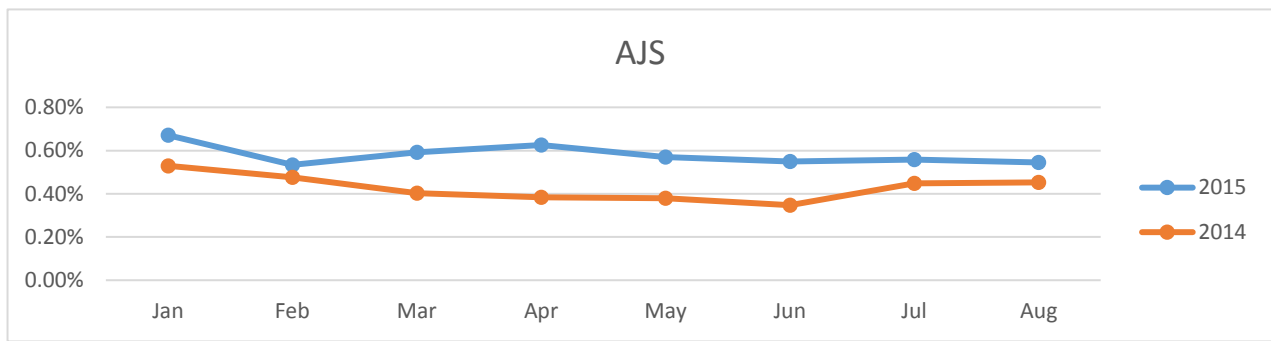
- Periodic visits to the camp to evaluate the surveillance of the epidemiological diseases
- Educate the people in the camp about the transmission and protection of contagious diseases , and distribution brochures about water treatment at home and safe storage.
- Lice and scabies medication will be provided by IRC via Massa organization and Al Harra hospital.
- Coordination with Injaz to notify EWARN team about any cases related to the surveillance list.

#### 3. Meeting with Save The Children to coordinate about outbreak response activities .

Please find below the comparison trends for 2014 and 2015 data of :

AJS , MEA, MEN, ABD and SARI





**ABD=Acute Bloody Diarrhea**

**AWD=Acute Watery Diarrhea**

**AFP=Acute Flaccid Paralysis**

**AJS=Acute Jaundice Syndrome**

**SARI= Severe Acute Respiratory Illness**

**UXD=Unexplained Death**

**FUO=Fever Of Unknown Origin**

**MEA=suspected Measles**

**MEN= suspected Meningitis**

**UCE=Unexplained Cluster Of Health Events**

**AD=Acute Diarrhea**

**ILI= Influenza-like Illness**