

**Epidemiological Weekly Bulletin  
 Syria EWARN**

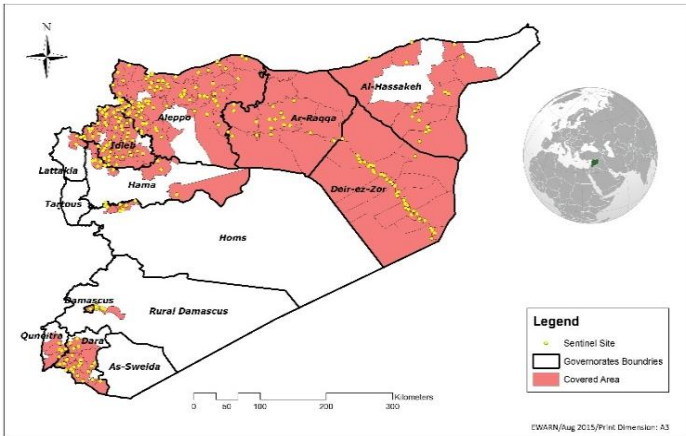
**Highlights**

- Participation in training for polio vaccination campaign teams (supervisors of governorates, districts and centers) for Aleppo, Idlib, Hama and Lattakia.
- 6 new health facilities were added to the sentinel sites this week : 4 in Hasakwh and 2 in Idlib.
- During Epi-week no 35 2015; 96% (481/462) of the health facilities across 12 Governorates provided surveillance data , 96% of reporting sites submitted the weekly reports on time.
- The total number of consultations reported during the reporting week was 149275 (including 40% children under the age of five) compared to 145572 consultations during week 34, 2015.
- In Epi week 35, 3 AFP (Acute Flaccid Paralysis) cases were reported in : Deir ez zor , As Suqaylabiyah and Harim .  
 Investigation for 188 AFP cases were conducted since the beginning of 2015 up to date. See weekly Acute Flaccid Paralysis Surveillance report for more details.
- 89 suspected measles cases reported in this week, the highest alerts were reported in Menbij (9). Lab investigation for 2 suspected cases in Aleppo with negative results for measles IgM.

- The number the STF cases (Suspected Typhoid Fever), was about 3586 cases, the highest alerts were reported in Deir ez zor (21).
- 894 cases of AJS , Lab investigation for 11 cases in Aleppo and Idlib with positive result of HAV Ab in 8 cases.
- 322 cases of SARI reported in Epi Week 35, the highest alerts were reported in Ain Alarab (4).
- In Epi week 35 : 13271 cases of Acute Diarrhea and 6826 cases of Influenza Like Illness were reported.
- Common disease reported under others were acute bronchiolitis (111 cases), chicken pox (163 cases), Brucellosis (67 cases), Pertussis (20) , Scabies, Lice ,mumps (7) , Cutaneous leishmaniasis, acute tonsillitis ,impetigo and Hand, foot and mouth diseases (52) .
- 1042 new cutaneous leishmaniasis cases reported this week, with 2 alerts in Al Mar'a and Jebel Saman districts .

**EWARN Coverage**

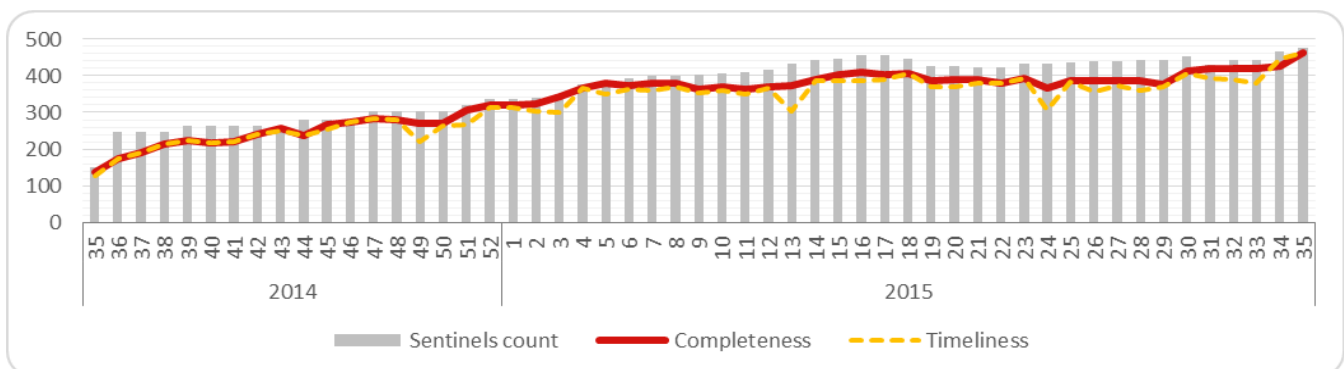
EWARN covers 103 sub districts and 35 districts in 12 governorates.



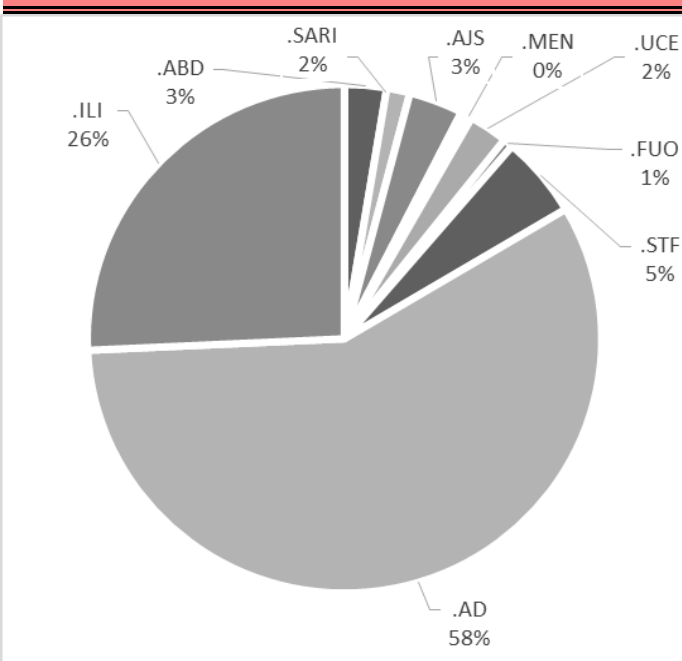
**Number of Sentinel Sites and Total Number of Consultations**

Governorate	# of sentinel	Reporting Sentinel	%	# of consultations
Al- Hasakeh	46	46	100%	4593
Aleppo	148	146	99%	38655
Ar-Raqqa	62	60	97%	10161
Damascus	3	1	33%	133
Dar'a	22	20	91%	11546
Deir-ez-Zor	55	54	98%	16222
Hama	14	12	86%	4918
Homs	11	10	91%	6227
Idlib	97	97	100%	48228
Lattakia	3	2	67%	1109
Quneitra	5	2	40%	634
Rural Damascus	15	12	80%	6849
<b>Grand total</b>	<b>481</b>	<b>462</b>	<b>96%</b>	<b>149275</b>

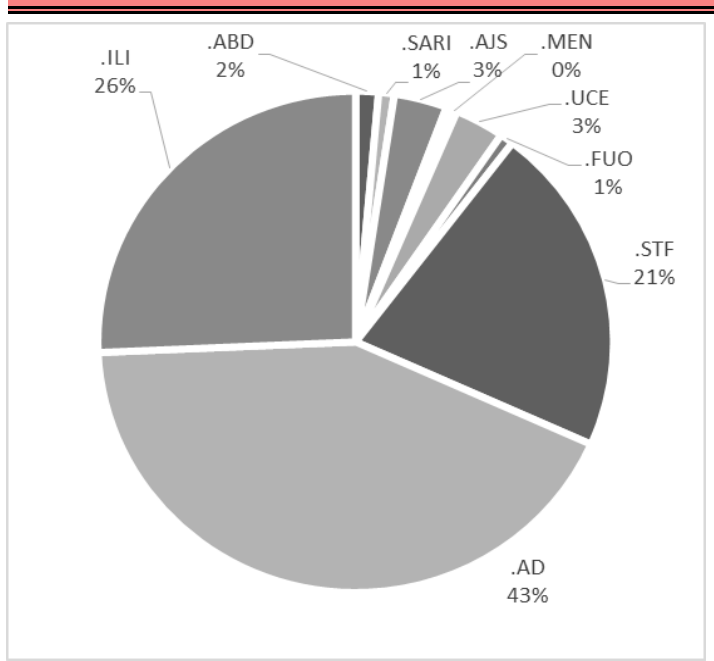
**Completeness and Timeliness**



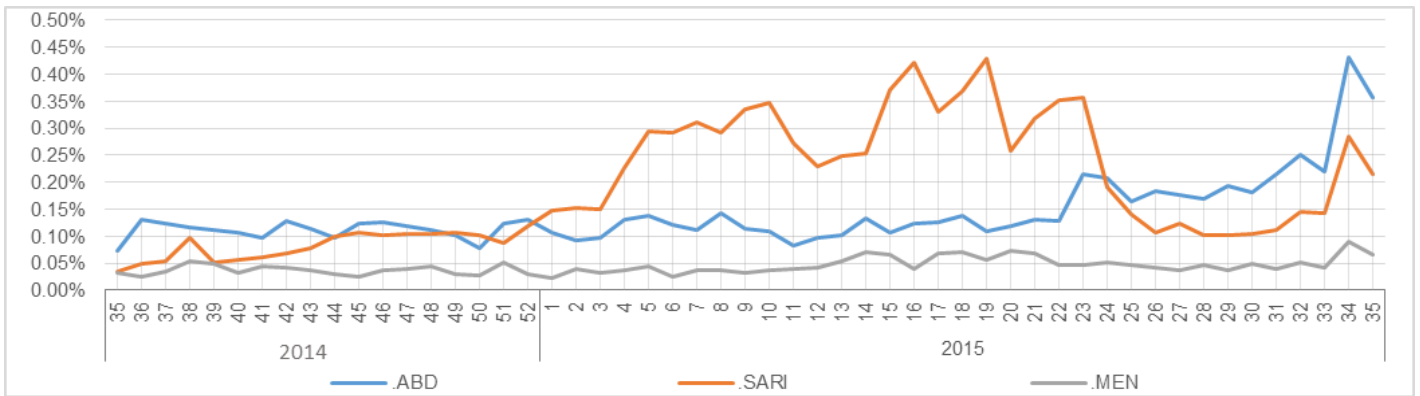
**Percentage of EWARN Syndromes < 5Y**



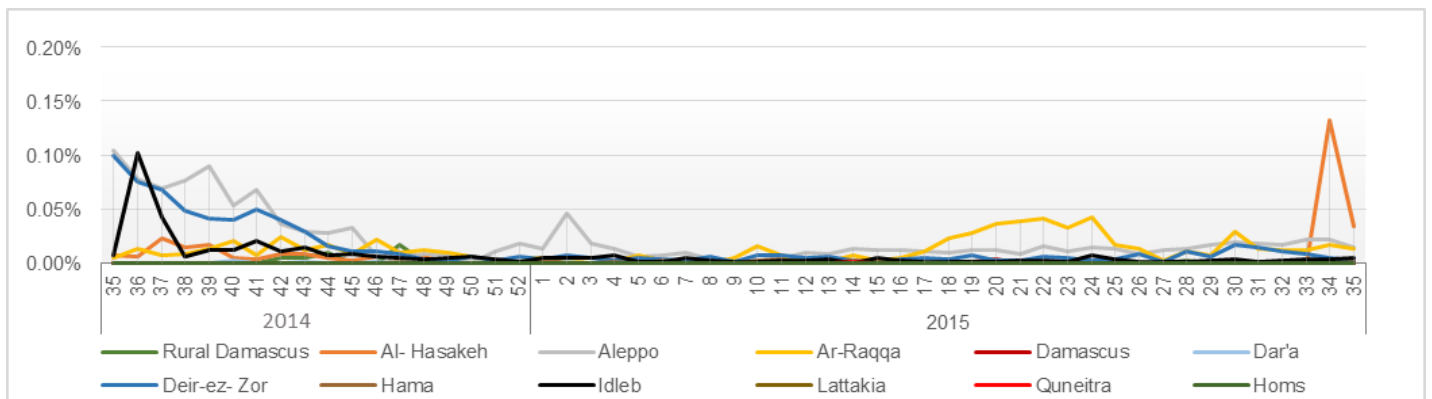
**Percentage of EWARN Syndromes >=5Y**



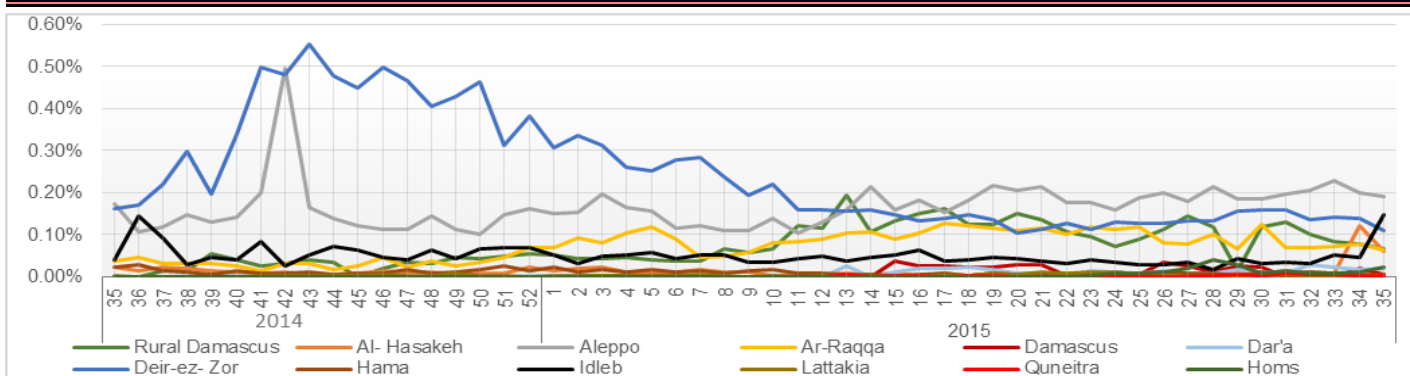
**Trends for essential priority diseases in 12 governorates – Epi week 33-2014 to Epi week 35 - 2015**



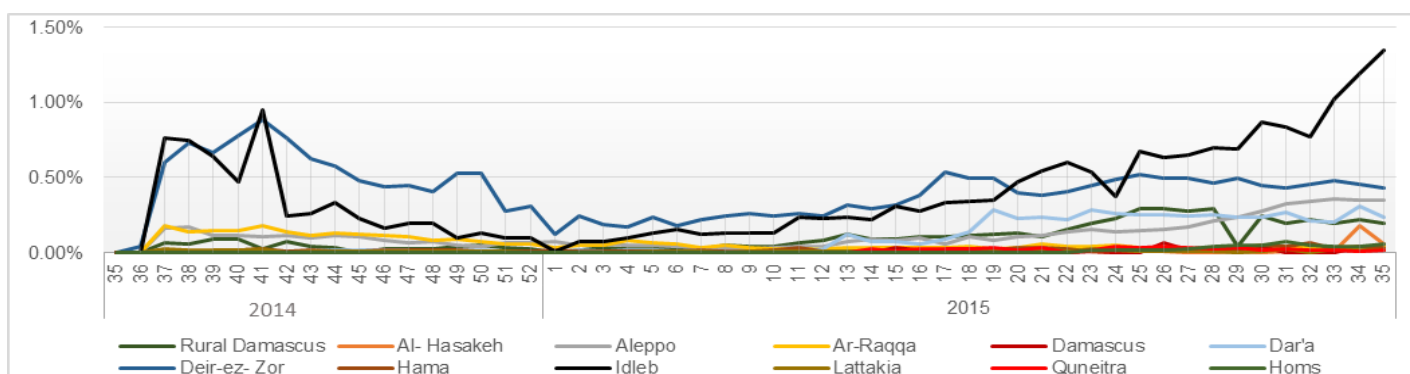
**Proportional Morbidity of suspected Measles by Governorate, Epi Week 35 - 2015**



**Proportional Morbidity of suspected AJS by Governorate, Epi Week 35 - 2015**



**Proportional Morbidity of suspected STF by Governorate, Epi Week 35 - 2015**



**Number of cases that EWARN observes by age & geographical area for Epi week 35 - 2015**

Governorate	Age Group	ABD	AWD	AJS	SARI	AFP	MEA	MEN	UCE	UXD	FUO	AD	ILI	LEISH	STF	OTHER	TOTAL
Al- Hasakeh	< 5	133	0	29	15	0	16	14	13	0	10	526	128	16	17	1201	4593
	> 5	71	0	50	17	0	28	15	11	0	9	200	60	54	58	1902	
Aleppo	< 5	53	0	136	59	0	12	9	69	2	13	1981	767	120	132	14084	38655
	> 5	33	0	110	46	0	7	8	115	2	14	1453	789	204	316	18121	
Ar-Raqqa	< 5	11	0	57	0	0	12	5	0	0	8	400	8	1	13	3798	10161
	> 5	12	0	25	0	0	5	7	0	0	6	207	8	3	38	5537	
Damascus	< 5	0	0	5	0	0	0	0	0	0	0	3	20	0	15	57	133
	> 5	0	0	0	0	0	0	0	0	0	0	0	3	0	2	28	
Dar'a	< 5	11	0	17	3	0	0	1	45	0	1	249	4	0	61	3944	11546
	> 5	6	0	8	5	0	0	3	138	0	8	291	26	0	241	6484	
Deir-ez-Zor	< 5	102	0	89	46	1	1	11	0	0	13	1921	653	3	84	5624	16222
	> 5	50	0	53	30	0	1	15	0	0	17	1418	469	28	469	5124	
Hama	< 5	1	0	1	16	1	0	0	0	0	2	146	51	25	2	1130	4918
	> 5	1	0	5	5	0	1	0	0	0	10	130	98	65	36	3192	
Homs	< 5	8	0	11	10	0	0	1	153	0	0	393	383	1	20	966	6227
	> 5	3	0	19	4	0	0	0	72	0	0	330	247	0	52	3554	
Idleb	< 5	20	0	81	38	0	4	7	27	0	19	1739	1278	168	273	12550	48228
	> 5	19	0	109	24	1	2	1	72	0	31	1727	1785	323	1464	26466	
Lattakia	< 5	0	0	0	0	0	0	0	0	0	0	16	5	0	0	234	1109
	> 5	0	0	2	0	0	0	0	0	0	0	36	25	0	24	767	
Quneitra	< 5	0	0	0	0	0	0	0	8	0	4	17	2	0	4	240	634
	> 5	0	0	3	0	0	0	0	7	0	8	34	5	0	16	286	
Rural Damascus	< 5	0	0	12	1	0	0	0	1	0	9	38	8	17	45	1490	6849
	> 5	0	0	72	3	0	0	3	12	10	14	16	4	14	204	4876	
TOTAL	< 5	339	0	438	188	2	45	48	316	2	79	7429	3307	351	666	45318	149275
	> 5	195	0	456	134	1	44	52	427	12	117	5842	3519	691	2920	76337	
Grand total		534	0	894	322	3	89	100	743	14	196	13271	6826	1042	3586	121655	

Disease	Alert threshold	#HF reach threshold	# Cases	The most affected Communities-Districts
AFP	1	3	3	Deir ez zor 1- As Suqaylabiyah 1 - Harim 1
MEA	1	47	89	Menbij 9 -AthThwarah 6 - Qamishli 5 - Ras Alain 5 - Ar Raqqa 4 - Malika 3 - Jebel Saman 2 - Hasakah 2 - Harim 2 - Mar`a 2 - Jisr AshShgur 1 - Idleb 1 - Jarablus 1 - Mayadin 1 - Deir ez zor 1- Bab 1 - As Salamiyeh 1
AJS	5	56	894	Menbij 10 - Deir ez zor 7 -Idleb 5 - Dar`a 3 -Rural Damascus 3 - Jisr AshShugur 3 - Bab 2 - Ar Raqqa 2 - Afrin 2 - Abu Kamal 2 - Ras Al Ain 2 -Harim 2 -Qamishli 2- Mayadin 2 -Jebel Saman 2 - Homs 2 - Duma 1 - Hasakeh 1 - Damascus 1 - Azaz 1 - Qatana 1
STF	5	146	3586	Deir ez zor 21 - Harim 17 - Jebel Saman 12 - Ma`ra 11 - Jisr AshShugur 10 -Idleb 9 - Abu Kamal 9 -Mayadin 8- Rural Damascus 8 -Dar`a 6 - Rastan 4 - Izra` 4 - As Salamiyeh 3 -As Sanamayn 3- Ariha 3 -Qamishli 2 - Ras Alain 2 - Raqqa 2 -Quneitra 2- Homs 2 - Damascus 1 - Duma 1 - Hafa 1 - Qatana 1 -Hasakah 1 - Lattakia 1- Ain Alarab 1 - Azaz 1
ABD	5	34	534	Ras Al Ain 5 - Mayadin 5 -Qamishli 4 - Abu Kamal 4 - Deir ez zor 4 - Al Malika 2 - Bab 2 - Hasakeh 2 -Jebel Saman 1 - Dar`a1 - Azaz 1 - Ain Alarab 1 - Homs 1 - Jisr AshSugur 1
SARI	5	16	322	Ain Alarab 4 - Deir ez zor 3 - Abu Kamal 2 - Ras Alain 1 - Homs 1 - Idleb 1 - Izra ` 1 - As Salamiyeh 1- Jebel Saman 1 - Ariha 1
MEN	5	3	100	Qamishli 2 - Deir ez zor 1
LEISH	50	2	1042	Ma`ra 1 - Jebel Saman 1

## Response Activities

- Participation in training for polio vaccination campaign teams** (supervisors of governorates, districts and centers) for Aleppo, Idleb , Hama and Lattakia. The training was held in Bab Al Hawa on 25<sup>th</sup> and 26<sup>th</sup> of August. With the attendance of Syria Immunization Task Force and Qatar Red Crescent.

**The trained staff number was 119, the main topics were:**

- Poliomyelitis review and eradication strategies.
  - The tasks of the campaign`s workers in all levels
  - The detailed planning, the calculation of the target number, mapping and marking of both the houses and fingers.
  - Logistic requirements for the campaign, human resources and cold chain.
  - Discussion of many scenarios of refusing vaccination and how to manage it.
- EWARN team in Dar`a and Quneitra has been attended a training course in Jordan in between 24<sup>th</sup> August -3<sup>rd</sup> September** , in the context of polio vaccination campaign in southern of Syria.
  - Distribution of EWARN bulletin copies in the health facilities in Idleb ,Harim, Ariha and Ma`ra districts.
  - EWARN team would like to thank the administration and the staff of *Save The Children* and *Syria Relief* in Idleb governorate – Al Ma`ra district , for their good collaboration and informing EWARN team there to launch the surveillance in Al Ma`ra health center after returning work in it.
  - Meeting with Halap Today T.V manager to coordinate about: vaccination campaign coverage , public health education and awareness about the prevention of the contagious diseases , and guide the media to contain any rumors about the outbreaks if they occurs.

ABD=Acute Bloody Diarrhea

AWD=Acute Watery Diarrhea

AFP=Acute Flaccid Paralysis

AJS=Acute Jaundice Syndrome

SARI= Severe Acute Respiratory Illness

UXD=Unexplained Death

FUO=Fever Of Unknown Origin

MEA=suspected Measles

MEN= suspected Meningitis

UCE=Unexplained Cluster Of Health Events

AD=Acute Diarrhea

ILI= Influenza-like Illness