

Epidemiological Weekly Bulletin Syria EWARN

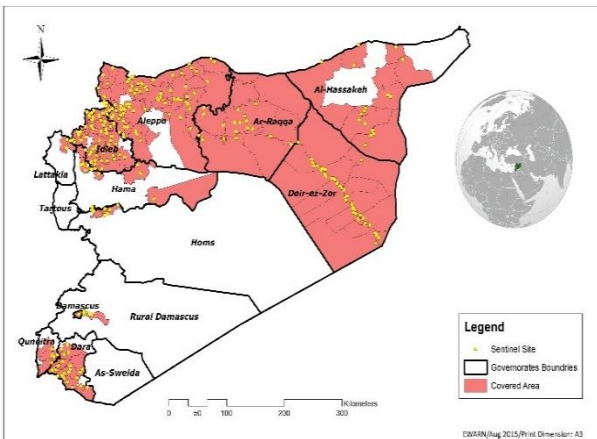
Highlights

- Launch the 11th round of polio campaign on September 12th, in Idleb , Hama and Lattakia governorates.
- 8 health facilities were added to the sentinel sites this week : 5 in Hasakeh , 2 in Aleppo and 1 in Idleb .
- During Epi-week no 37 2015; 97.7% (489/478) of the health facilities across 12 Governorates provided surveillance data , 95.3% of reporting sites submitted the weekly reports on time.
- The total number of consultations reported during the reporting week was 158073 (including 40% children under the age of five) compared to 150077 consultations during week 36 , 2015.
- In Epi week 37, 4 AFP (Acute Flaccid Paralysis) cases were reported in : Ath Thwara 2 , Jebel Saman 1 and Afrin 1 . Investigation for 195 AFP cases were conducted since the beginning of 2015 up to date. See weekly Acute Flaccid Paralysis Surveillance report for more details.
- 54 suspected measles cases reported in this week, the highest alerts were reported in Menbij (6). Lab investigation for 2 suspected cases in Idleb with negative results for Measles IgM.

- The number the STF cases (Suspected Typhoid Fever), was about 3842 cases, the highest alerts were reported in Deir ez zor (20 alerts).
- 657 cases of SARI reported in Epi Week 37, the highest alerts were reported in Ras Alain.
- In Epi week 37: 13062 cases of Acute Diarrhea and 8918 cases of Influenza Like Illness were reported.
- Common disease reported under others were acute bronchiolitis (47cases), chicken pox (100 cases), Brucellosis (53cases), Pertussis (10) , Scabies, Lice ,mumps (13) , Cutaneous leishmaniasis, acute tonsillitis(85) , impetigo (16) and Hand, foot and mouth diseases (19) . 1 new confirmed pulmonary T.B case was reported from Dar'a – Smad village in 27 years old male .
- 1368 new cutaneous leishmaniasis cases reported this week, with 4 alerts in : Hsakeh , Al Mar'a , Harim and Jebel Saman districts .
- Head Lice outbreak investigation in Daret Azzi – Aleppo governorate with the proper response actions.

EWARN Coverage

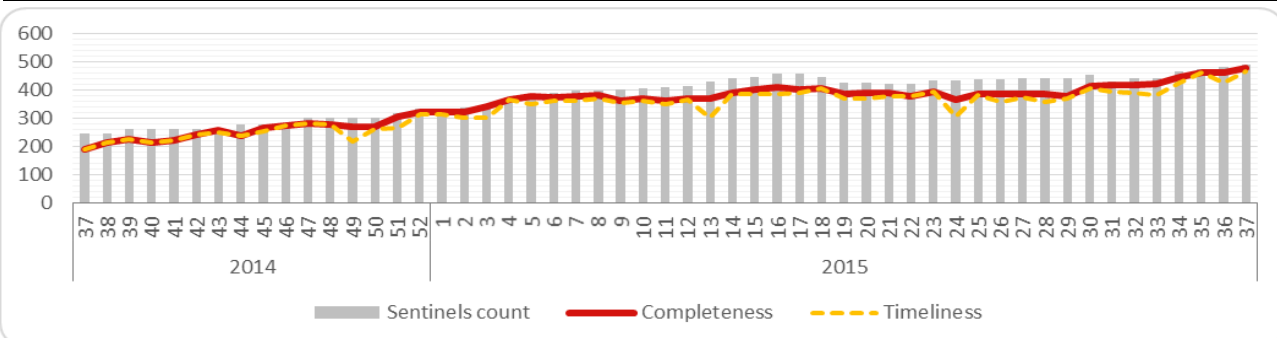
EWARN covers 103 sub districts and 35 districts in 12 governorates.



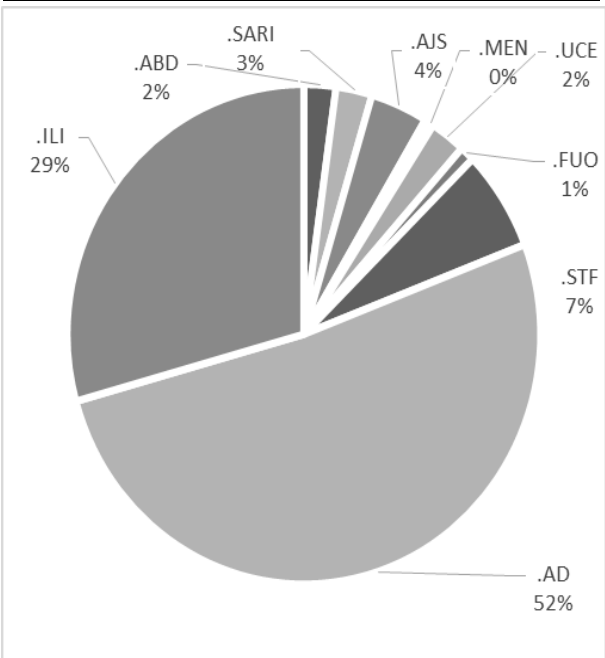
Number of Sentinel Sites and Total Number of Consultations

Governorate	# of sentinel	Reporting Sentinels	%	# Of consultations
Al- Hasakeh	51	51	100%	5396
Aleppo	150	150	100%	43160
Ar-Raqqa	62	62	100%	10586
Damascus	3	3	100%	813
Dar'a	22	20	91%	10951
Deir-ez-Zor	55	53	96%	15980
Hama	14	12	86%	5742
Homs	11	10	91%	5974
Idleb	98	98	100%	49880
Lattakia	3	1	33%	930
Quneitra	5	3	60%	703
Rural Damascus	15	15	100%	7958
Grand total	489	478	98%	158073

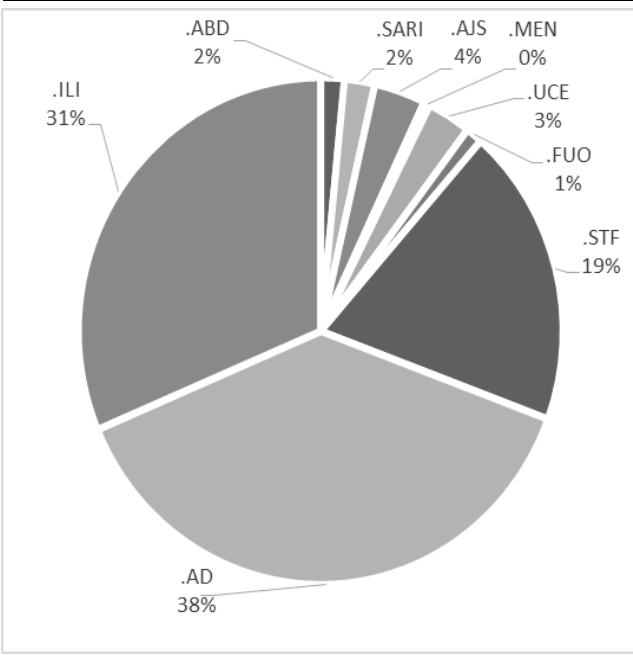
Completeness and Timeliness



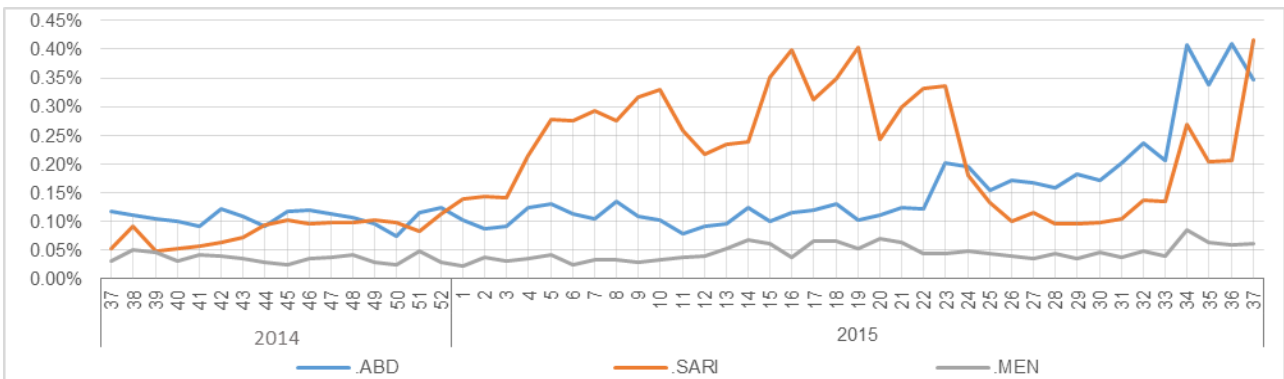
Percentage of EWARN Syndromes < 5Y



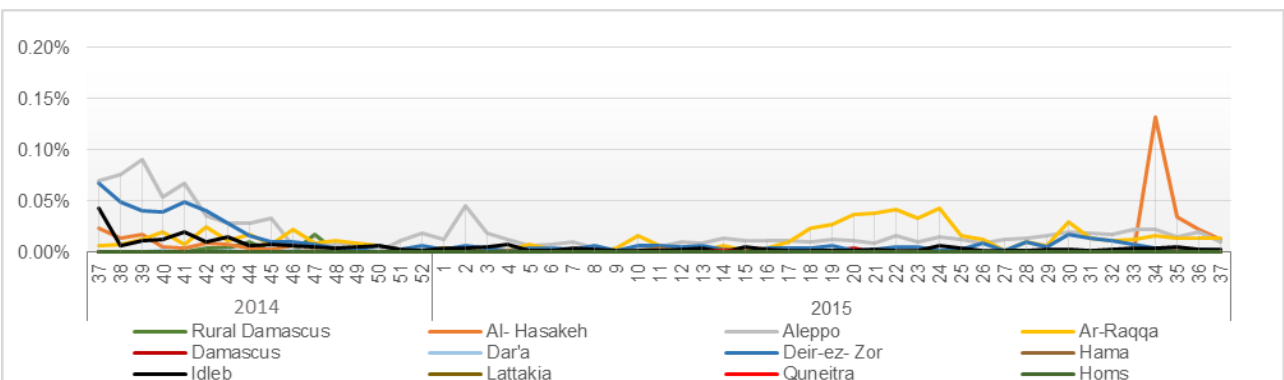
Percentage of EWARN Syndromes >=5Y



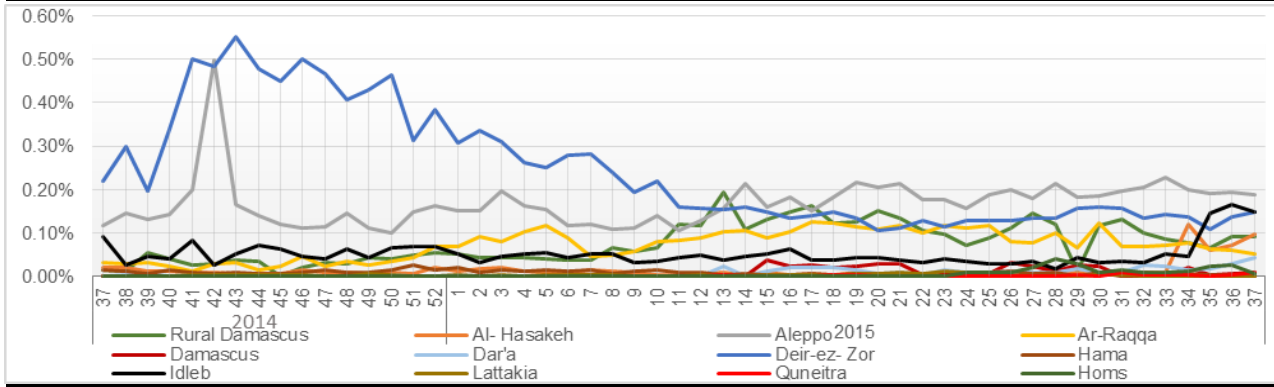
Trends for essential priority diseases in 12 governorates – Epi week 37-2014 to Epi week 37 - 2015



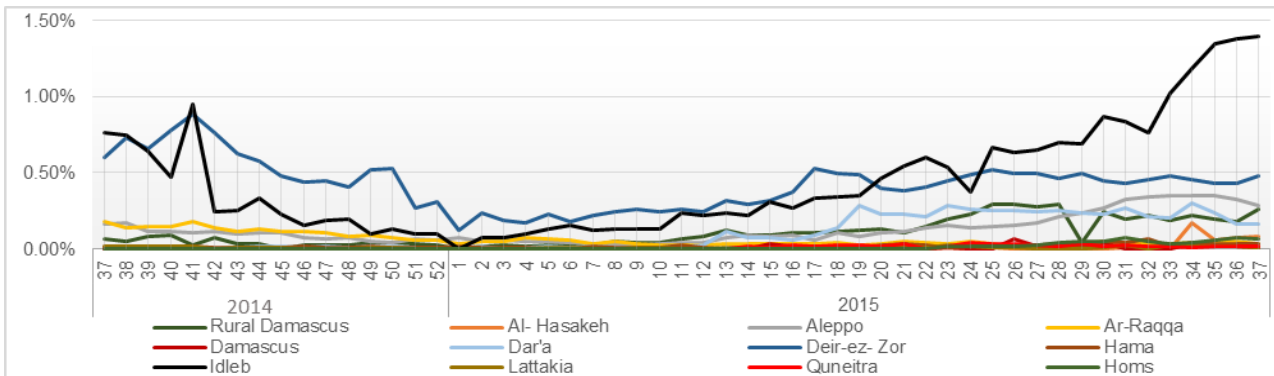
Proportional Morbidity of suspected Measles by Governorate, Epi Week 37 - 2015



Proportional Morbidity of suspected AJS by Governorate, Epi Week 37 - 2015



Proportional Morbidity of suspected STF by Governorate, Epi Week 37 - 2015



Number of cases that EWARN observes by age & geographical area for Epi week 37 - 2015

Governorate		ABD	AWD	AJS	SARI	AFP	MEA	MEN	UC	UXD	FUO	AD	ILI	LEISH	STF	OTHER	TOTAL
Al-Hasakeh	< 5	79	0	62	128	0	11	10	90	0	58	341	78	75	26	1397	5396
	> 5	91	0	69	130	0	6	7	99	1	49	333	126	71	84	1975	
Aleppo	< 5	54	0	142	54	0	9	10	68	0	14	2396	1154	115	119	14465	43159
	> 5	46	0	113	47	2	4	12	77	0	12	1621	1145	239	266	20975	
Ar-Raqqa	< 5	20	0	54	0	0	7	4	0	0	4	353	20	2	8	3960	10586
	> 5	14	0	18	0	2	11	5	1	0	13	187	39	2	37	5825	
Damascus	< 5	0	0	9	0	0	0	0	0	0	13	0	0	0	10	353	813
	> 5	0	0	3	0	0	0	0	0	0	3	2	0	0	4	416	
Dar'a	< 5	19	0	33	12	0	0	5	34	0	0	181	6	0	41	3968	10951
	> 5	17	0	25	20	0	0	1	78	0	9	140	10	2	183	6167	
Deir-ez-Zor	< 5	117	0	123	76	0	1	11	0	0	26	1814	985	9	102	5299	15981
	> 5	49	0	79	17	0	1	7	0	0	26	1300	698	50	549	4642	
Hama	< 5	0	0	0	22	0	0	0	0	0	3	87	165	25	6	1410	5742
	> 5	2	0	2	21	0	0	0	0	0	13	108	355	71	34	3418	
Homs	< 5	5	0	6	7	0	0	0	64	0	0	354	292	1	5	1472	5974
	> 5	2	0	2	2	0	0	0	62	0	2	255	348	0	84	3011	
Idleb	< 5	14	0	97	49	0	2	18	77	0	6	1687	1434	184	464	12626	49880
	> 5	11	0	104	70	0	2	3	106	0	39	1730	2050	506	1433	27168	
Lattakia	< 5	0	0	0	0	0	0	0	0	0	0	2	0	0	0	158	930
	> 5	5	0	0	0	0	0	0	0	0	0	12	4	0	11	738	
Quneitra	< 5	0	0	0	0	0	0	1	8	0	0	27	5	0	5	247	703
	> 5	2	0	12	0	0	0	2	6	0	0	81	4	0	17	286	
Rural Damascus	< 5	0	0	28	0	0	0	0	1	0	17	30	0	8	135	2045	7958
	> 5	0	0	96	2	0	0	2	17	0	5	21	0	8	219	5324	
TOTAL	< 5	308	0	554	348	0	30	59	342	0	141	7272	4139	419	921	47400	2E+05
	> 5	239	0	523	309	4	24	39	446	1	171	5790	4779	949	2921	79945	
Grand total		547	0	1077	657	4	54	98	788	1	312	13062	8918	1368	3842	1E+05	

Disease	Alert threshold	#FF reach threshold	# Cases	The most affected Communities-Districts
AFP	1	4	4	2 Aleppo - 2 Ar-raqqa
MEA	1	29	54	Almayadin(1)-Almalika(1)-Al-thwarah(4)Ar-raqqa(4)-A'zaz(1)-Deir-ez-zor(1)-Idleb(3)-Jebel saman(2)-Menbij(6)-Quamishli(3)-Ras al ain(3)
AJS	5	69	1077	Afrin(3)-Ain al arab(Kobani)(2)-Almayadin(7)-Albab(3)-Al-hasakeh(2)-Ar rastan(1) -Ar raqqa(1) -Az zabdani(2)-A'zaz(2)-Damascus(1)-Dar'a(3)-Deir-ez-zor(8)-Duma(2)-Harim(1)-Idleb(7)-Izra'(1)-Jebel Saman(2)-Jisr-ash-shugur(4)-Menbij(8)-Quamishli(1)-Quneitra(1)Ras al ain(4)-Rural Damascus(2)- Abu Kamal(1)
STF	5	146	3842	Abu Kamal(6)-ain al arab(1)-Almayadin(10)-Al-hasakeh(3)-Alma'ra(11)-Ar rastan(2)-Ariha(3)-Ar-raqqa(1)-As salamiyeh(3)-As sanamayn(3)-A'zaz(2)-Damascus(1)-Da'ra(5)Deir-ez-zor(20)-Duma(1)-Harim(18)-Idleb(14)-Izra'(4)-Jebel Saman(11)-Jisr-ash-shugur(12)-Lattakia(1)-Qatana(1)-Quamishli(2)-Quneitra(2)-Ras al ain(2)-Rural Damascus(7)
ABD	5	41	547	Abu Kamal(1)-Ain alarab(1)-Almayadin(5)-Albab(4)-Al-Hasakeh(3)-Al malika(3)-Al-thwarah(1)-As sanamayn(1)-Dar'a(1)-Deir-ez-zor(7)-Izra'(1)-Jebel saman(1)-Lattakia(1)-Quamishli(4) Ras Alain(7)
SARI	5	44	657	Abu kamal(4)-Ain alarab(2)-Almayadin(1)-Al-Hasakeh(1)-Almalika(4)-Al ma'ra(2)-As salamiyeh(1)-As suqaylabi yah(3)-A'zaz(2)-Dar'a(1)-Deir-ez-zor(2)-Harim(1)-Homs(1)-Idleb(3)-Izra'(1)-Jisr-ash-shugur(1)-Quamishli(6)-Ras al ain(8)
MEN	5	1	98	Deir-ez- Zor(1)
LEISH	50	4	1368	Al-hasakeh(1)-Al ma'ra(1)-Harim(1)-Jebel Saman(1)

Response Activities

- Participation in **Science week** which is held under supervision of **Relief International** in women and children hospital in Haritan – Aleppo , the EWARN team presented many lectures about EWARN activities , AFP surveillance and the diseases which should be notified to the EWARN team . Many doctors and tens of nurses and health education staff attended these lectures and were interesting about EWARN activities in Syria.
- **Head Lice outbreak investigation in Daret Azzi – Aleppo governorate** with coordination with the local education council. The proper response actions were taken (medication provision and educational brochures) in the education institutes and outpatient clinics.
- Distribution of EWARN bulletin copies in the health facilities in Idleb ,Harim, Ariha and Ma`ra districts.
- Distribution of EWARN registers in the sentinel sites of both Dar`a and Quneitra .

ABD=Acute Bloody Diarrhea

AWD=Acute Watery Diarrhea

AFP=Acute Flaccid Paralysis

AJS=Acute Jaundice Syndrome

SARI= Severe Acute Respiratory Illness

UXD=Unexplained Death

FUO=Fever Of Unknown Origin

MEA=suspected Measles

MEN= suspected Meningitis

UCE=Unexplained Cluster Of Health Events

AD=Acute Diarrhea

ILI= Influenza-like Illness