

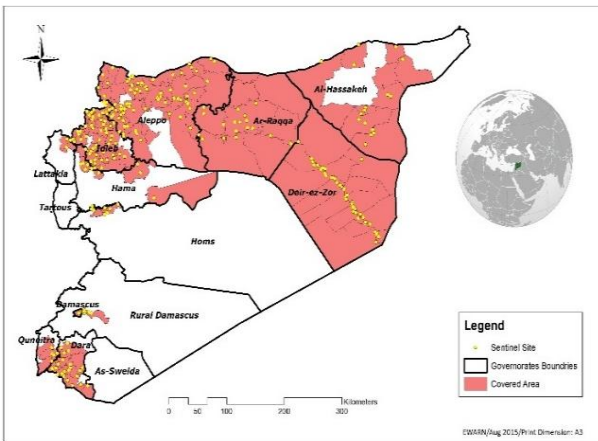
Highlights

- Launch the 11th polio vaccination campaign in Idleb , Hama and Lattakia on September 12th and lasted for 6 days , the vaccinated children number is 271291 with total coverage percentage 99%.
- During Epi-week no 38 , 2015 94.4% (489/462) of the health facilities across 12 Governorates provided surveillance data 90.8% of reporting sites submitted the weekly reports on time.
- The total number of consultations reported during the reporting week was 152331 (including 40% children under the age of five) compared to 158073 consultations during week 37 , 2015.
- In Epi week 38, 5 AFP (Acute Flaccid Paralysis) cases were reported in : Aleppo 4 Homs 1. Investigation for 200 AFP cases were conducted since the beginning of 2015 up to date. See weekly Acute Flaccid Paralysis Surveillance report for more details.
- 64 suspected measles cases reported in this week, the highest alerts were reported in Menbij (6).
- The number the STF cases (Suspected Typhoid Fever), was about 3460 cases, the highest alerts were reported in Deir ez zor (21 alerts).

- 660 cases of SARI reported in Epi Week 38, the highest alerts were reported in Ras Alain 8.
- In Epi week 38: 12364 cases of Acute Diarrhea and 9017 cases of Influenza Like Illness were reported.
- Common disease reported under others were acute bronchiolitis (86), chicken pox (47), Brucellosis (78), Pertussis (10) , Scabies, Lice ,mumps (6) , Cutaneous leishmaniasis, acute tonsillitis ,impetigo (15) and Hand, foot and mouth diseases (15) . 1 new pulmonary T.B case was reported in Rural Damascus - Duma for 55 years old male .
- 1407 new cutaneous leishmaniasis cases reported this week, with 7 alerts in : Al Mar`a 4 , Harim 2 and Jebel Saman 1 .
- The results of water quality test for wells samples in Aleppo city (Alsoukary and Kallasah neighborhoods) which taken as a response action for AD outbreak in Aleppo city , shows the presence of E.coli and high level of nitrate , which make the water in rgses weel unsafe for drinking.

EWARN Coverage

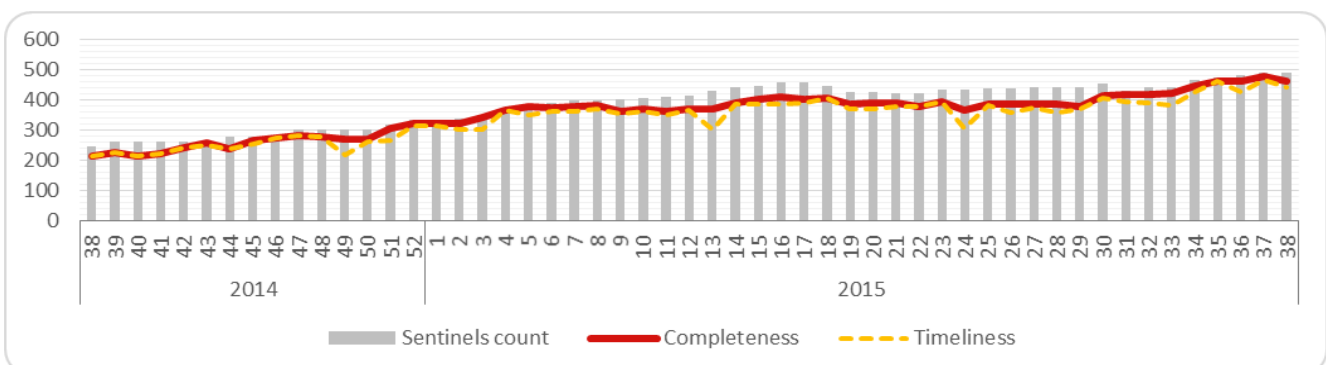
EWARN covers 103 sub districts and 35 districts in 12 governorates.



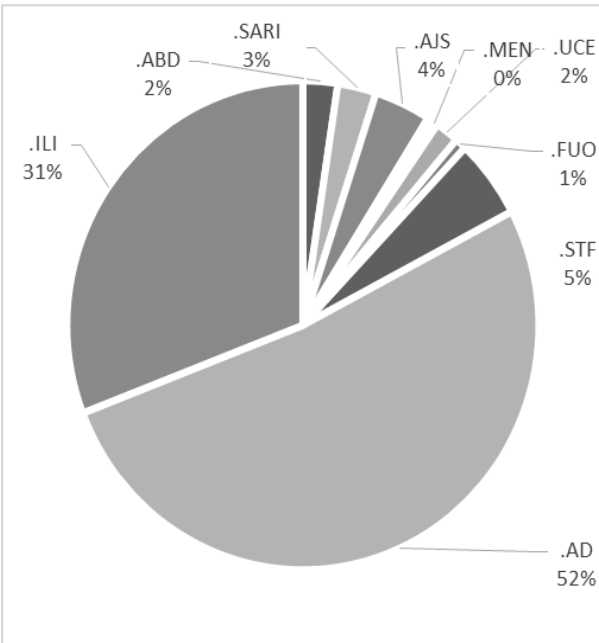
Number of Sentinel Sites and Total Number of Consultations

Governorate	# of sentinel s	Reporting Sentinel s	%	# of consultation s
Al- Hasakeh	51	49	96%	5551
Aleppo	150	143	95%	39829
Ar-Raqqa	62	62	100%	10716
Damascus	3	2	67%	629
Dar'a	22	19	86%	13932
Deir-ez-Zor	55	53	96%	15309
Hama	14	10	71%	4558
Homs	11	10	91%	6852
Idleb	98	95	97%	45172
Lattakia	3	2	67%	1229
Quneitra	5	2	40%	700
Rural Damascus	15	15	100%	7854
Grand total	489	462	94%	152331

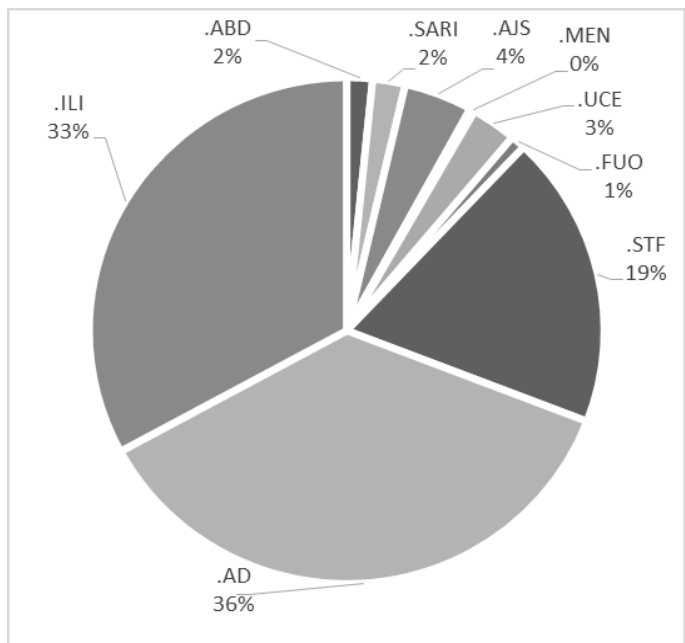
Completeness and Timeliness



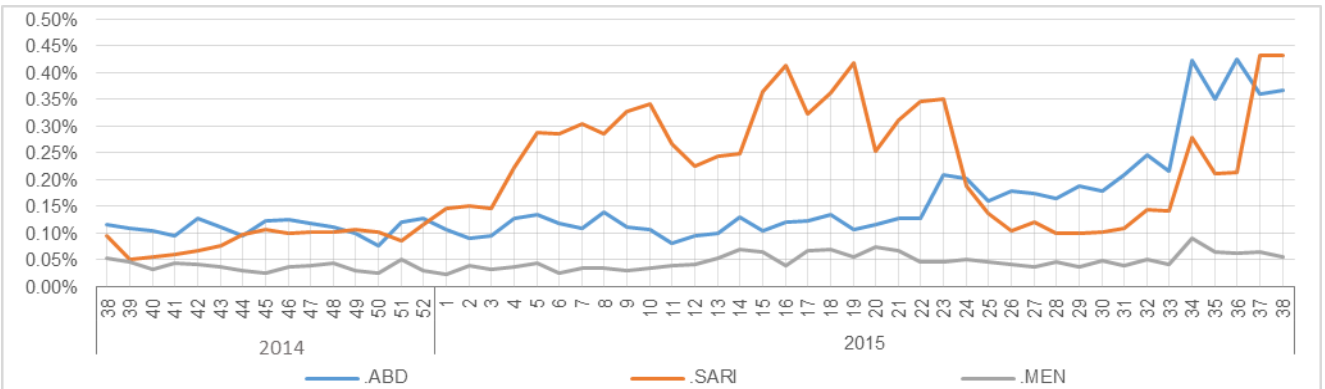
Percentage of EWARN Syndromes < 5Y



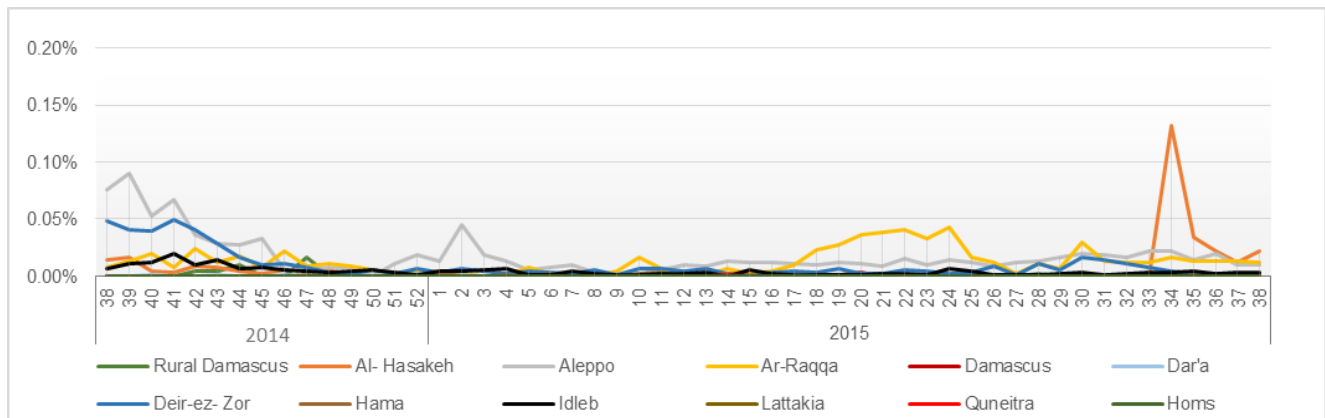
Percentage of EWARN Syndromes >=5Y



Trends for essential priority diseases in 12 governorates – Epi week 38-2014 to Epi week 38 - 2015

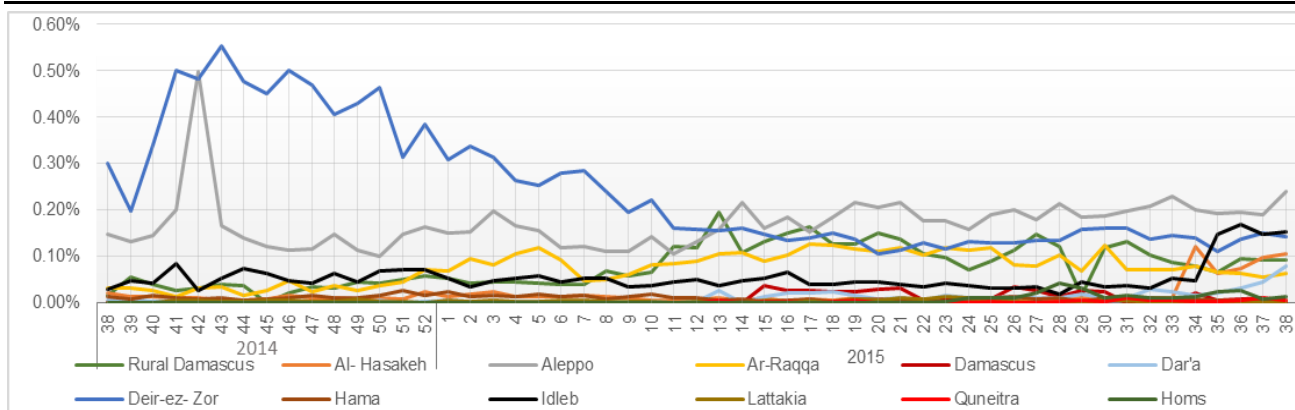


Proportional Morbidity of suspected Measles by Governorate, Epi Week 38 - 2015



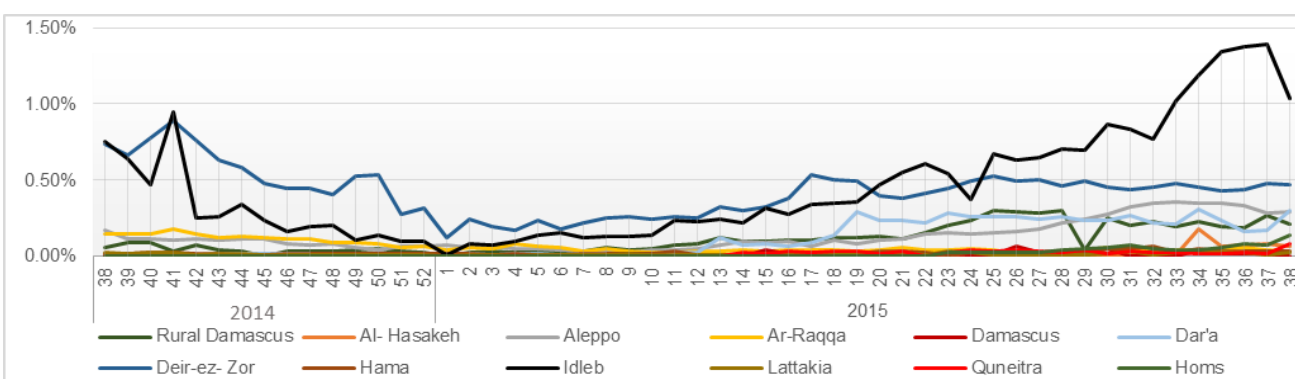
Proportional Morbidity of suspected AJS by Governorate, Epi Week

38 - 2015



Proportional Morbidity of suspected STF by Governorate, Epi Week

38 - 2015



Number of cases that EWARN observes by age & geographical area for Epi week

38 - 2015

Governorate	ABD	AWD	AJS	SARI	AFP	MEA	MEN	UCE	UXD	FUO	AD	ILI	LEISH	STF	OTHER	TOTAL
Al-Hasakeh	< 5	69	0	65	155	0	18	18	92	0	60	365	194	37	18	1259
	> 5	94	0	72	169	0	11	9	93	0	47	346	214	64	62	2020
Aleppo	< 5	64	0	153	69	2	11	8	28	0	14	2239	1210	130	119	13360
	> 5	42	0	158	42	2	2	8	58	1	21	1513	1136	220	260	18959
Ar-Raqqa	< 5	22	0	53	11	0	10	2	0	0	0	305	54	0	6	3875
	> 5	13	0	27	0	0	5	6	0	0	0	112	60	2	36	6117
Damascus	< 5	0	0	0	0	0	0	0	0	0	0	0	0	0	0	310
	> 5	0	0	0	0	0	0	0	0	0	0	0	0	0	0	319
Dar'a	< 5	14	0	42	7	0	0	1	38	0	0	217	14	0	84	4836
	> 5	13	0	59	8	0	0	0	143	0	3	151	34	3	301	7964
Deir-ez-Zor	< 5	132	0	114	64	0	3	16	0	0	21	1900	946	4	77	4944
	> 5	55	0	70	14	0	0	0	0	0	28	1290	704	47	534	4346
Hama	< 5	2	0	1	12	0	0	0	0	0	0	116	196	24	0	873
	> 5	1	0	5	4	0	0	0	0	0	2	110	660	36	35	2481
Homs	< 5	3	0	4	4	1	0	1	43	0	0	389	269	0	5	1700
	> 5	3	0	12	8	0	0	0	59	0	1	252	306	1	175	3616
Idleb	< 5	11	0	68	26	0	4	10	17	0	9	1422	1311	221	318	12208
	> 5	14	0	130	38	0	0	4	50	0	30	1451	1676	602	1032	24520
Lattakia	< 5	6	0	0	0	0	0	0	0	0	0	8	4	0	0	264
	> 5	1	0	1	0	0	0	0	0	0	0	15	27	0	25	878
Quneitra	< 5	1	0	0	0	0	0	0	1	0	0	68	2	0	48	234
	> 5	0	0	5	0	0	0	0	4	0	0	40	0	0	50	247
Rural Damascus	< 5	0	0	28	12	0	0	1	3	0	2	32	0	9	38	1988
	> 5	0	0	91	17	0	0	0	12	0	4	23	0	7	237	5350
TOTAL	< 5	324	0	528	360	3	46	57	222	0	106	7061	4200	425	713	45851
	> 5	236	0	630	300	2	18	27	419	1	136	5303	4817	982	2747	76817
Grand total		560	0	1158	660	5	64	84	641	1	242	12364	9017	1407	3460	122668

Disease	Alert threshold	#HF reach threshold	# Cases	The most affected Communities-Districts
AFP	1	5	5	4 Aleppo - 1 Homs
MEA	1	30	64	6 Menbij - 5 Althawra-5 Ras Al Ain- 4 Ar-raqqa - 3 Alhsakeh - 2 Almayadin - 2 Jabal Saman - 1Jisir-Ash- Shugur - 1 Afrin - 1 Deir-ez- Zor
AJS	5	68	1158	10 Deir-ez- Zor -7 Menbij -6 Ras al ain -6 Da'ra - 5 Jisir-Ash- Shugur- 5Jebel Saman - 4 Almayadin - 4 Albab -3 Damascus - 3Afrin-2 Azzabadani- 2 A'zaz -2 Idleb -2 Izra'-1 Almkia - 1Al Ma'ra - 1 Ar-raqqa- 1 Duma -1 Abu Kamal -1 Alhasakeh - 1 Quamishli -
STF	5	143	3460	21 Deirezzor - 16 Harim - 13 Alma'ra - 12 Jabal Saman - 11 Idleb -10 Almayadin - 9 Jiser Ashughur - 7 Damascus -6 Abu Kamal -5 Da'ra - 4 Izr'a - 4 Albab -3 Ar rastan - 3 Ras alain - 3 Sanamin - 2 Quamishli - 2 Quenitra - 2 Alhasakeh - 2 As salamiyeh - 1 Ain alarab - 1 Hafa - 1 Ariha - 1 A'zaz - 1 Duma - 1 Lattakia - 1 Qatana - 1 As suqaylabiyeh
ABD	5	41	560	7 Deirezzor -7 Ras al ain -5 Abu Kamal - 5 Almayadin - 4 Almalika-4 Qamishli -2 Albab - 2 Ar-raqqa -2 Jabal saman -1 Al- Hasakeh-1 Da'ra - 1 Lattakia
SARI	5	37	660	8 Ras Al ain - 5 Quamishli - 4 Almkia - 4 Ain Alarab - 3 Abu Kamal - 3 Alhasakeh - 2 Jiser Alshughur - 1 Almayadin - 1 Alma'ra - 1 As suqaylabiyeh - 1 Homs - 1 Ariha - 1 Jebel Saman - 1 Qatana - 1 Damascus
MEN	5	1	84	1 Alhasakeh
LEISH	50	7	1407	4 Al Ma'ra - 2 Jebel Saman - 1 Harim

Response Activities

1. Launch the 11th polio vaccination campaign in Idleb , Hama and Lattakia on September 12th and lasted for 6 days , the target number is 373927 and the vaccinated children number is 271291 in the 3 governorate .
The total coverage percentage is 99% : 101% in Idleb , 87% in Hama and 113% in Lattakia.
2. Second training for MSF staff in Atmeh camps by the DLo their on September 13th, the training included:
 - Case definition for the syndromes in EWARD
 - Weekly and immediate reporting
 - Poliomyelitis review , signs and symptoms , transmission and protection
3. Participation in **Science week** which is held under supervision of Relief International in women and children hospital in Haritan – Aleppo , the EWARD team presented many lectures about EWARD activities , AFP surveillance and the diseases which should be notified to the EWARD team .
4. Head Lice outbreak investigation in Daret Azzi – Aleppo governorate with coordination with the local education council. The proper response actions were taken (medication provision and educational brochures) in the education institutes and outpatient clinics.

ABD=Acute Bloody Diarrhea

AWD=Acute Watery Diarrhea

AFP=Acute Flaccid Paralysis

AJS=Acute Jaundice Syndrome

SARI= Severe Acute Respiratory Illness

UXD=Unexplained Death

FUO=Fever Of Unknown Origin

MEA=suspected Measles

MEN= suspected Meningitis

UCE=Unexplained Cluster Of Health Events

AD=Acute Diarrhea

ILI= Influenza-like Illness