

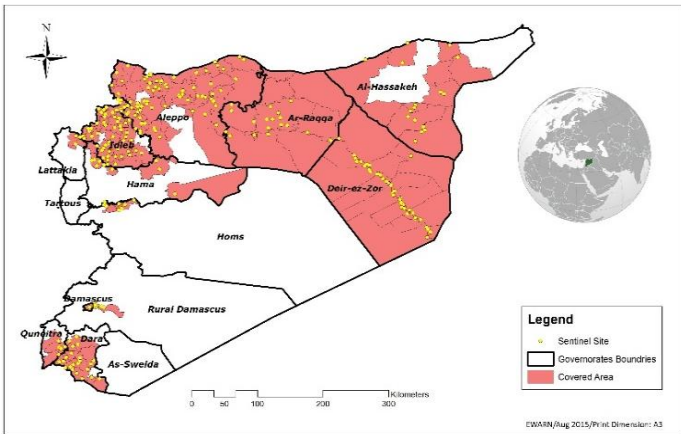
**Highlights**

- Launch preparations for the 11<sup>th</sup> polio vaccination campaign in Aleppo governorate to be implement on 5<sup>th</sup> October.
- During Epi-week no 40, 2015 95% (491/466) of the health facilities across 12 Governorates provided surveillance data 84% of reporting sites submitted the weekly reports on time and two sentinel site has been added in Aleppo - Al-hasakeh.
- The total number of consultations reported during the reporting week was 140028(including 40% children under the age of five) compared to 130837 consultations during week 39, 2015.
- In Epi week 40, AFP (Acute Flaccid Paralysis) 8cases were reported(Aleppo 3 - Ar-Raqqa 2 - Deir-ez-Zor 1 - Homs 1 - Idleb 1) Investigation for 208AFP cases were conducted since the beginning of 2015 up to date. See weekly Acute Flaccid Paralysis Surveillance report for more details.
- 35suspected measles cases reported in this week, the highest alerts were reported in Ar-raqqa(6).
- The number the STF cases (Suspected Typhoid Fever), was about 2933cases, the highest alerts were reported in Deir ez zor (19alerts).

- 1001cases of SARI reported in Epi Week 39, the highest alerts were reported in Ras Alain 10.
- In Epi week 40: 11481cases of Acute Diarrhea and 9540cases of Influenza Like Illness were reported. (AD cases number was doublicated in the following Subdistricts:Areesheh, Hole, Markada, Shadadah, Al Malika, amuda, Darbasiya h, Abu Kamal, Hajin, Al Mayadin, Thiban, Harim,Kafr Takharim, A'zaz, Hrak).
- common diseases reported under others were acute : bronchiolitis (97), chicken pox (55), Brucellosis (46), Pertussis (15), Scabies, lice, mumps (12),leishmaniasis , Tonsillitis purulent, Impetigo(4) and hand, foot and mouth disease (28) .
- 1284new cutaneous leishmaniasis cases reported this week, with 3 alerts in: Al Ma'ra 3 - Izra' 1 - Harim 1
- One death due to fulminant hepatitis was reported in Idleb - Harim in male 25 years old , the patient deteriorated within 2 days from signs beginning . The direct cause of the hepatic injury didn't diagnosed with no similar signs in the households.

**EWARN Coverage**

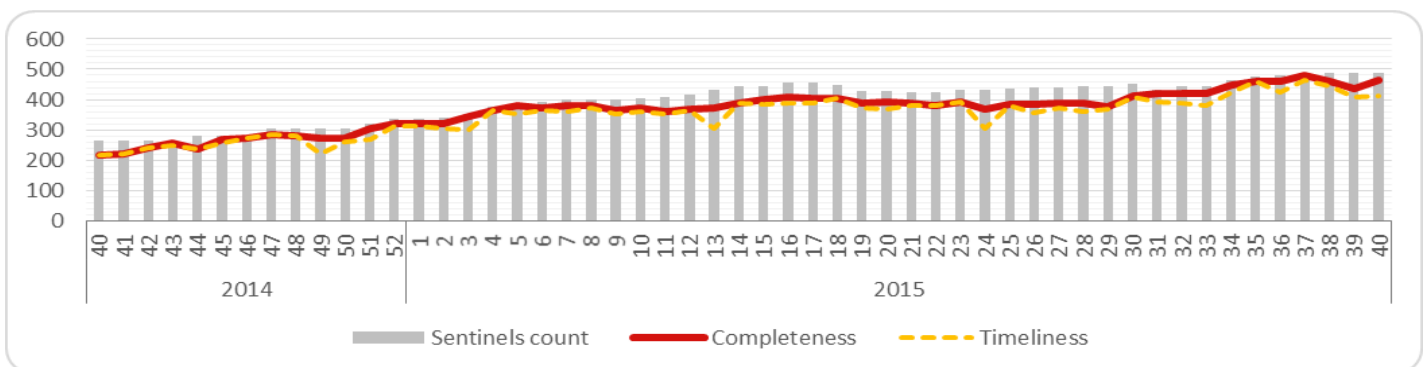
EWARN covers 110 sub districts and 37 districts in 12 governorates.



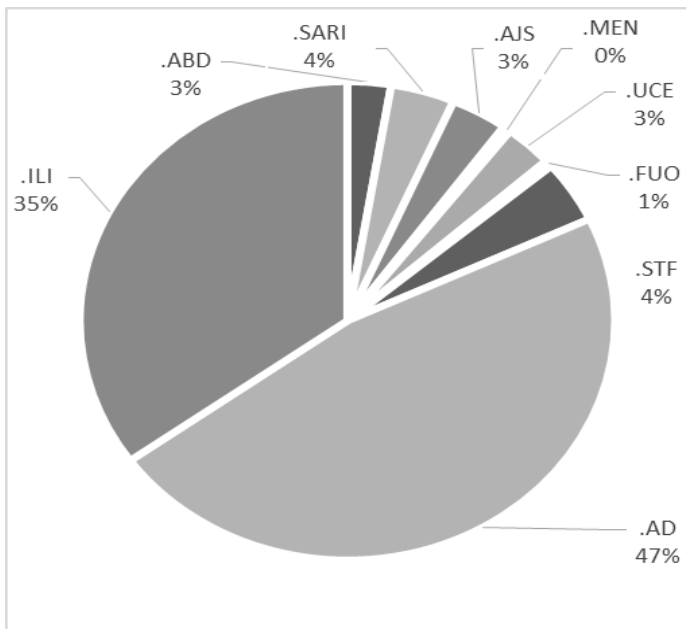
**Number of Sentinel Sites and Total Number of Consultations**

Governorate	# of sentinel	Reporting Sentinel	# of consultations
Al- Hasakeh	52	52	7953
Aleppo	151	151	36770
Ar-Raqqa	62	55	8473
Damascus	3	3	850
Dar'a	22	18	10948
Deir-ez-Zor	55	52	15889
Hama	14	12	4898
Homs	11	10	4459
Idleb	98	93	41266
Latakia	3	2	1169
Quneitra	5	3	653
Rural Damascus	15	15	6700
<b>Grand total</b>	<b>491</b>	<b>466</b>	<b>140028</b>

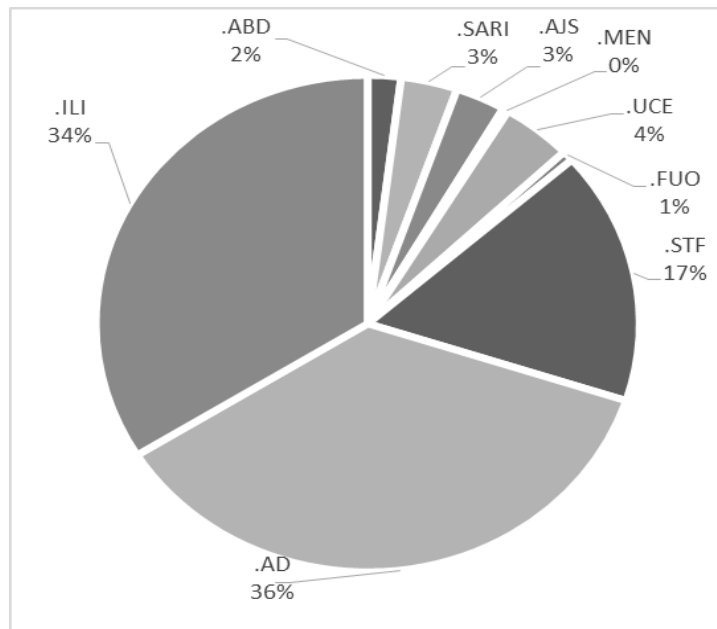
**Completeness and Timeliness**



**Percentage of EWARN Syndromes < 5Y**

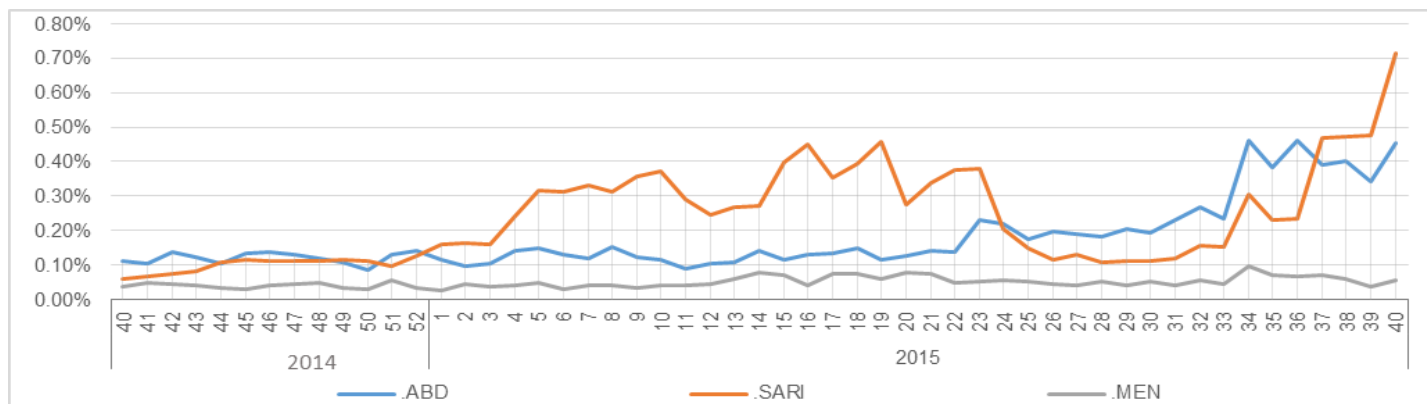


**Percentage of EWARN Syndromes >=5Y**



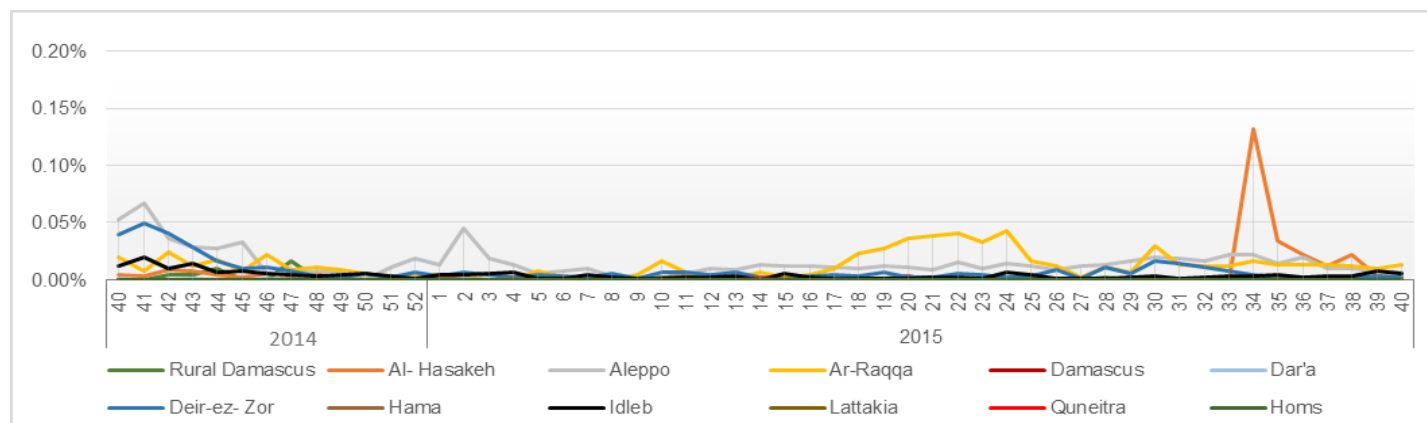
**Trends for essential priority diseases in 12 governorates – Epi week 40-2014 to Epi week**

**40 - 2015**



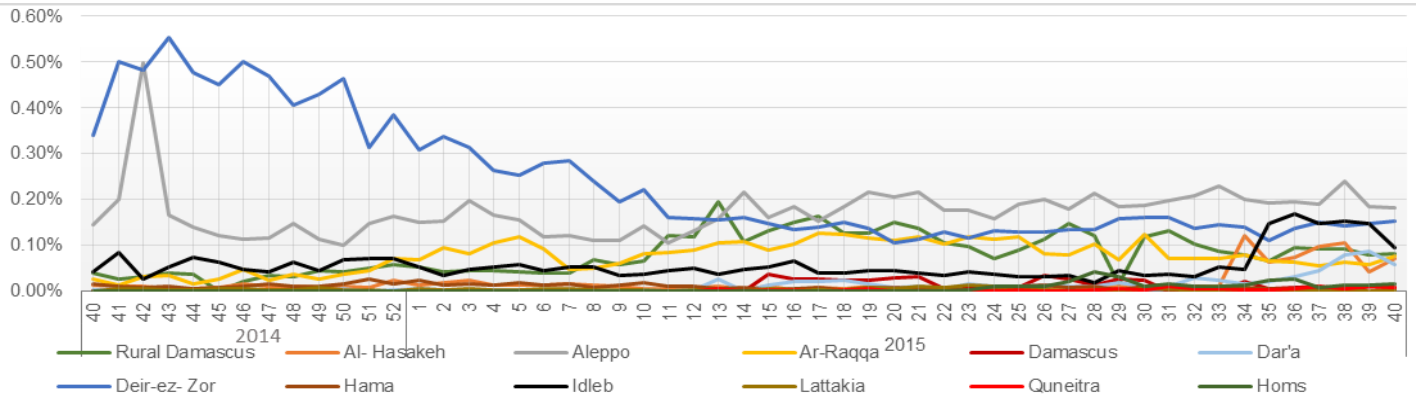
**Proportional Morbidity of suspected Measles by Governorate, Epi Week**

**40 - 2015**



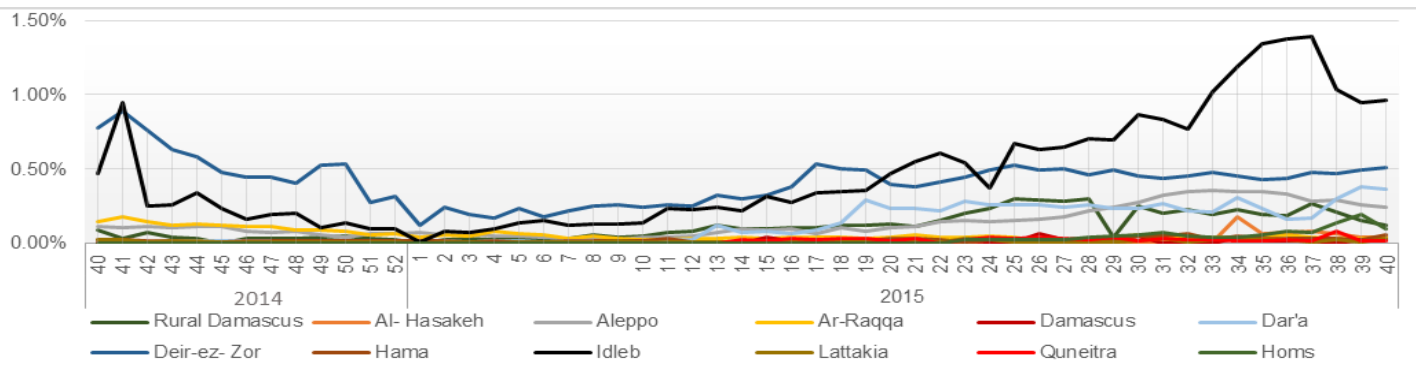
Proportional Morbidity of suspected AJS by Governorate, Epi Week

40 - 2015



Proportional Morbidity of suspected STF by Governorate, Epi Week

40 - 2015



Number of cases that EWARN observes by age & geographical area for Epi week

40 - 2015

Governorate		ABD	AWD	AJS	SARI	AFP	MEA	MEN	UCE	UXD	FUO	AD	ILI	LEISH	STF	OTHER	TOTAL
Al-Hasakeh	< 5	137	0	23	393	0	0	3	241	1	2	500	580	18	0	1887	7953
	> 5	196	0	61	405	0	2	3	278	0	0	478	520	17	46	2162	
Aleppo	< 5	57	0	114	27	2	6	10	24	1	19	1691	1130	85	86	13173	36770
	> 5	32	0	100	15	1	2	9	39	0	35	1032	1065	200	199	17616	
Ar-Raqqa	< 5	12	0	65	9	1	3	4	0	0	2	279	40	1	15	3049	8473
	> 5	7	0	24	0	1	12	5	0	0	4	77	35	4	28	4796	
Damascus	< 5	0	0	7	0	0	0	0	0	0	3	0	19	0	11	401	850
	> 5	0	0	1	0	0	0	0	0	0	2	2	10	0	9	385	
Dar'a	< 5	4	0	40	4	0	0	2	92	0	0	164	22	152	96	3684	10948
	> 5	9	0	28	6	0	0	2	215	0	2	199	45	1	333	5848	
Deir-ez-Zor	< 5	120	0	122	34	0	1	20	0	1	18	2162	1136	11	103	4695	15889
	> 5	28	0	57	8	1	2	4	0	0	20	1648	1015	42	504	4137	
Hama	< 5	2	0	3	7	0	0	1	0	0	1	66	161	15	0	1322	4898
	> 5	2	0	6	6	0	0	0	0	0	12	75	227	60	61	2871	
Homs	< 5	4	0	9	7	1	0	0	26	0	0	236	238	0	10	1283	4459
	> 5	1	0	7	6	0	0	0	31	0	0	233	227	1	101	2038	
Idleb	< 5	13	0	48	32	0	6	8	0	0	13	1086	1344	191	206	11002	41266
	> 5	7	0	65	30	1	1	5	33	0	20	1248	1700	475	934	22798	
Lattakia	< 5	3	0	0	0	0	0	0	0	0	0	0	2	0	0	265	1169
	> 5	1	0	2	0	0	0	0	0	0	0	4	24	0	31	837	
Quneitra	< 5	0	0	3	0	0	0	0	0	0	0	18	0	0	2	243	653
	> 5	0	0	6	0	0	0	0	0	0	0	54	0	0	17	310	
Rural Damascus	< 5	0	0	25	5	0	0	0	8	0	3	94	0	7	34	1868	6700
	> 5	0	0	70	7	0	0	1	9	0	2	135	0	4	107	4321	
TOTAL	< 5	352	0	459	518	4	16	48	391	3	61	6296	4672	480	563	42872	140028
	> 5	283	0	427	483	4	19	29	605	0	97	5185	4868	804	2370	68119	
Grand total		635	0	886	1001	8	35	77	996	3	158	11481	9540	1284	2933	110991	

Disease	Alert threshold	#HF reach threshold	# Cases	The most affected Communities-Districts
AFP	1	8	8	Aleppo 3 - Ar-Raqqa 2 - Deir-ez-Zor 1 - Homs 1 - Idleb 1
MEA	1	22	35	Ar-Raqqa 6 - Al- Thwarah 3 - Idleb 3 - Menbij 3 - Quamishli 2 - Abu Kamal 2 - Al Bab 1 - Al Mayadin 1 - Ariha 1
AJS	5	58	886	Deir-ez- Zor 10 - Dar'a 5 - Menbij 5 - Ras Al Ain 4 - Al Mayadin 4 - Jebel Saman 4 - A'zaz 3 - Idleb 3 - Jisr-Ash- Shugur 3 - Quamishli 2 - Al Bab 2 - Az Zabdani 2 - Rural Damascus 2 - Abu Kamal 1 - Al Ma'ra 1 - Afrin 1 - Al- Thwarah 1 - Ar Rastan 1 --- Damascus 1 - Duma 1 - Harim 1 - Quneitra 1
STF	5	124	2933	Deir-ez- Zor 19 - Al Mata 12 - Harim 12 - Al Mayadin 9 - Idleb 9 - Jebel Saman 8 - Dar'a 7 - Abu Kamal 6 - Jisr-Ash- Shugur 6 - Rural Damascus 6 - Izra' 3 - As Salamiyeh 3 - As Sanamayn 3 - Quneitra 3 - Quamishli 2 - Al Bab 2 - A'zaz 2 - Ar Rastan 2 - Ariha 2 - Ras Al Ain 1 - Al- Hasakeh 1 - Al Hafa 1 - As Sunaylahi yah 1 - Damascus 1 - Duma 1 - Lattakia 1 - Qatana 1
ABD	5	41	635	Ras Al Ain 9 - Quamishli 6 - Abu Kamal 4 - Al Bab 4 - Al- Hasakeh 4 - Al Mayadin 3 - Al Malika 3 - Deir-ez- Zor 3 - Izra' 2 - Al Ma'ra 1 - A'zaz 1 - Dar'a 1
SARI	5	32	1001	Ras Al Ain 10 - Quamishli 5 - Al Malika 5 - Al- Hasakeh 3 - Jebel Saman 2 - Abu Kamal 1 - Al Ma'ra 1 - Afrin 1 - As Salamiyeh 1 - Homs 1 - Jisr-Ash- Shugur 1 - Rural Damascus 1
MEN	5	1	77	Quamishli 1
LEISH	50	5	1284	Al Ma'ra 3 - Izra' 1 - Harim 1

## Response Activities

- ❖ Participation in the monthly Atmeh actors group meeting in Atmeh , with discussion about the typhoid fever investigation in Idleb which performed now .
- ❖ Distribution of head lice and scabies medication – which provided by IRC - in Al Amal camp in Quneitra with - coordination of Harra hospital and Injaz institute. However , Al Amal camp has 2000 IDPs in 80 tents.
- ❖ Chlorination and cleaning campaign of water reservoirs was held in Harra city – Dar`a rural , it started in the school with the begining of the semester, then in the main water reservoir of the city.
- ❖ The Participation of EWARN lab staff in training course under the supervision of MENTOR initiative , about Leishmaniasis cases sampling to apply PCR test on those cases.

ABD=Acute Bloody Diarrhea

AWD=Acute Watery Diarrhea

AFP=Acute Flaccid Paralysis

AJS=Acute Jaundice Syndrome

SARI= Severe Acute Respiratory Illness

UXD=Unexplained Death

FUO=Fever Of Unknown Origin

MEA=suspected Measles

MEN= suspected Meningitis

UCE=Unexplained Cluster Of Health Events

AD=Acute Diarrhea

ILI= Influenza-like Illness