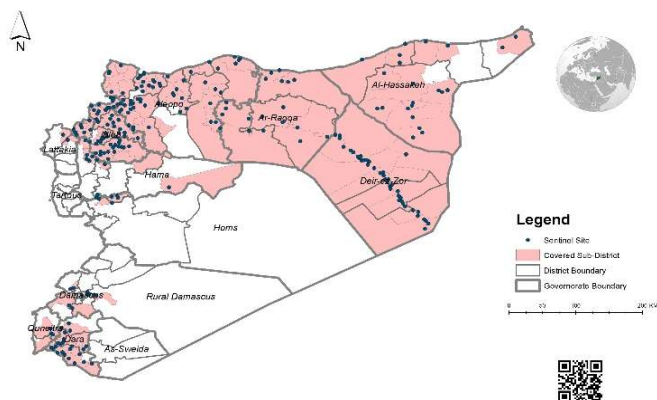


Highlights

- The third quarterly meeting for DLOs was held in between 17-21 November. For more details please see the extension.
- During Epi-week no 47, 2015 89% (517/462) of the health facilities across 12 Governorates provided surveillance data 86% of reporting sites submitted the weekly reports on time. Few sentinel sites in Aleppo had stopped functioning due to security conditions.
- The total number of consultations reported during this week were 139296 (including 40% children under the age of five) compared to 155536 consultations during week 46, 2015.
- In Epi week 47, 1 AFP (Acute Flaccid Paralysis) case was reported : 1 in Idleb. Investigation for 233 AFP cases were conducted since the beginning of 2015 up to date. For more details see weekly Acute Flaccid Paralysis Surveillance report.
- 22 suspected measles cases reported in this week, the alerts reported from Ar-raqqa(7). Lab investigation for 11 suspected measles cases from Idleb and Aleppo with 2 positive cases for IgM.
- The number of STF cases (Suspected Typhoid Fever) were about 1257, the highest alerts were reported in Deir-ez-Zor(18)
- 433 cases of SARI reported in Epi Week 47, the highest alert were reported in Ar-raqqa (09).
- In Epi week 47: 8926 cases of Acute Diarrhea and 16039 cases of Influenza Like Illness were reported.
- AD cases number were duplicated in the following sub districts : (Shadadah-Ghandora h-Jarablus-Al- Thawrah-Mansura-Damascus-Dar'a-Kafr Zeita-Kafr Nobol).
- Common diseases reported under others were : acute bronchiolitis (246), chicken pox (13), Brucellosis (57), Pertussis (12), Scabies, lice, mumps (20),leishmaniasis , Tonsillitis , Impetigo(5) and hand, foot and mouth disease (15) .
- 1317 new cutaneous leishmaniasis cases reported this week, with alerts in Al Ma'ra 2 - Harim 1 - Jebel Saman 1.

EWARN Coverage

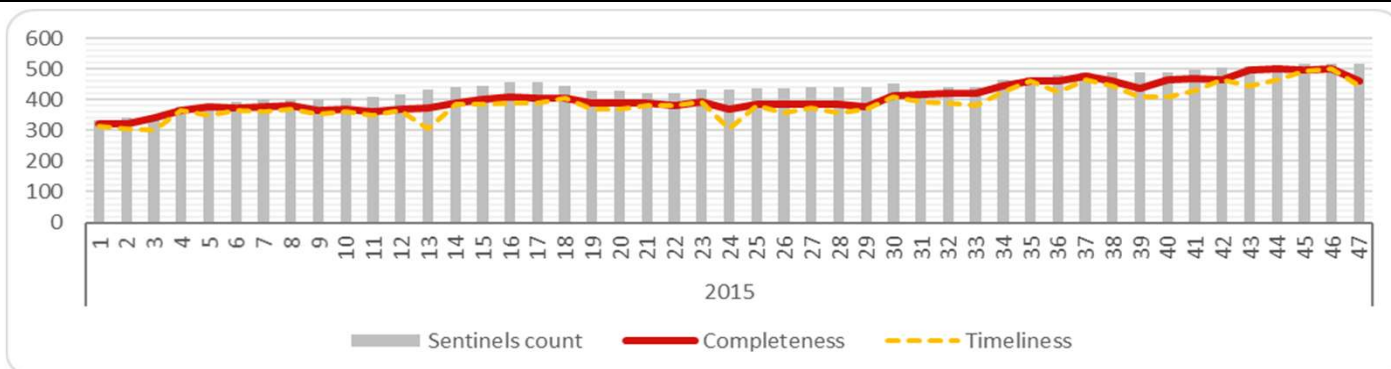
EWARN covers 130 Sub districts and 40 districts in 12 governorates.



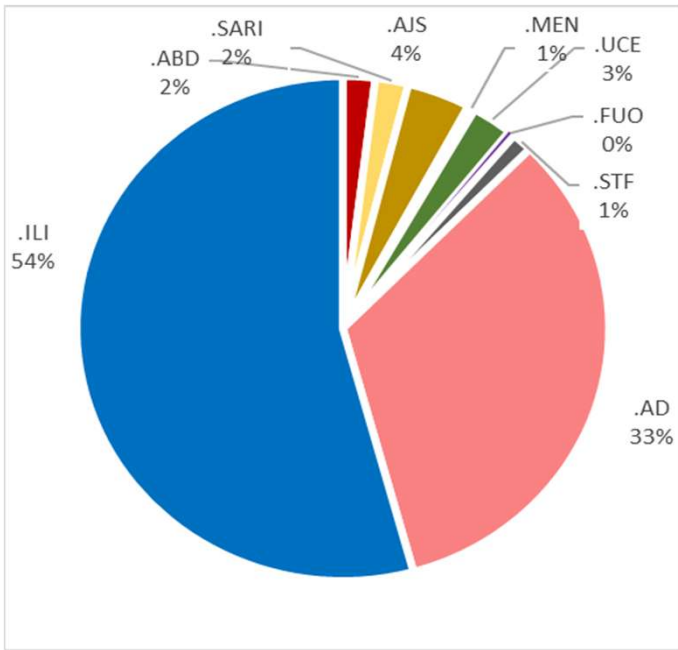
Number of Sentinel Sites and Total Number of Consultations

| Governorate | # of sentinels | Reporting Sentinels | % of | # of consultation |
|--------------------|----------------|---------------------|------------|-------------------|
| Al- Hasakeh | 65 | 62 | 95% | 7457 |
| Aleppo | 158 | 137 | 87% | 32888 |
| Ar-Raqqa | 62 | 60 | 97% | 9055 |
| Damascus | 3 | 2 | 67% | 673 |
| Dar'a | 27 | 27 | 100% | 16099 |
| Deir-ez-Zor | 57 | 54 | 95% | 15805 |
| Hama | 13 | 13 | 100% | 6324 |
| Homs | 10 | 9 | 90% | 6193 |
| Idleb | 99 | 78 | 79% | 35212 |
| Lattakia | 3 | 2 | 67% | 882 |
| Quneitra | 5 | 3 | 60% | 597 |
| Rural Damascus | 15 | 15 | 100% | 8111 |
| Grand total | 517 | 462 | 89% | 139296 |

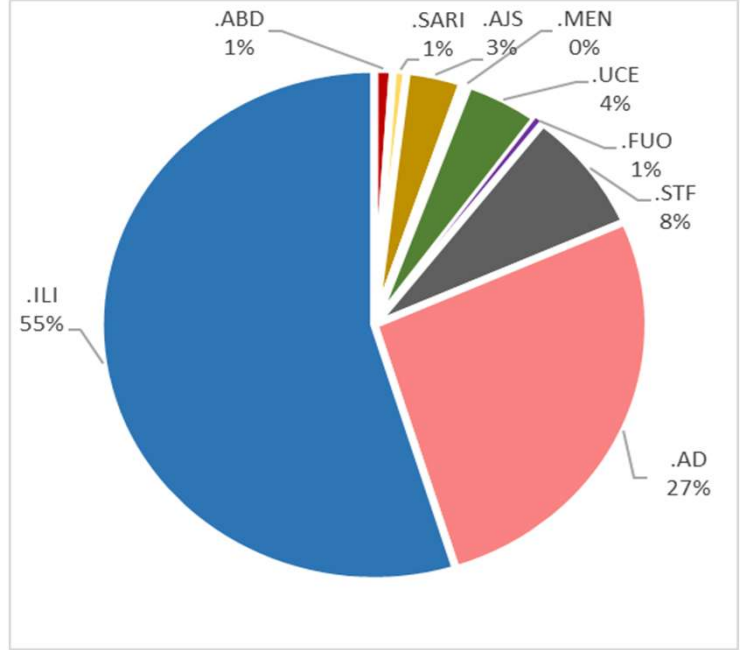
Completeness and Timeliness



Percentage of EWARN Syndromes < 5Y

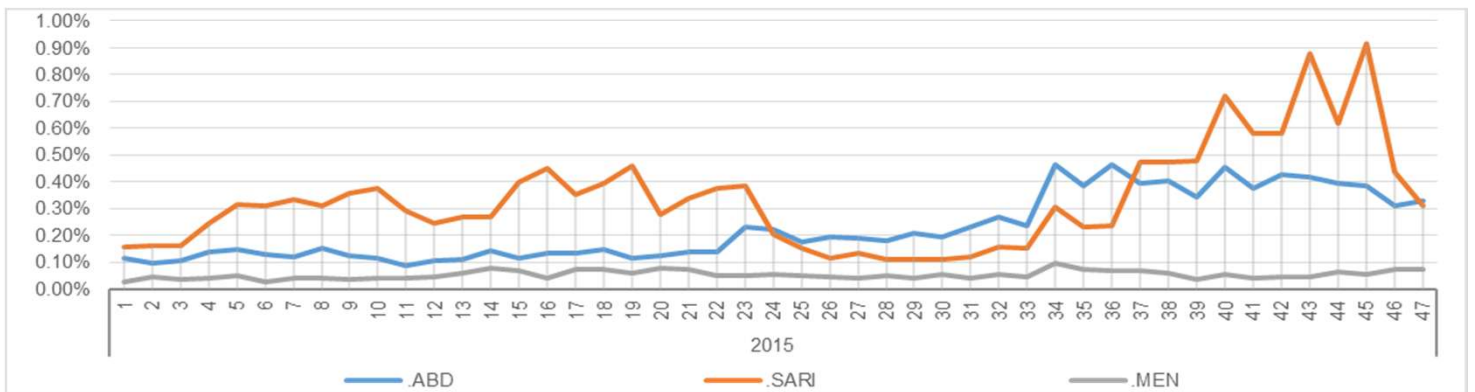


Percentage of EWARN Syndromes >=5Y



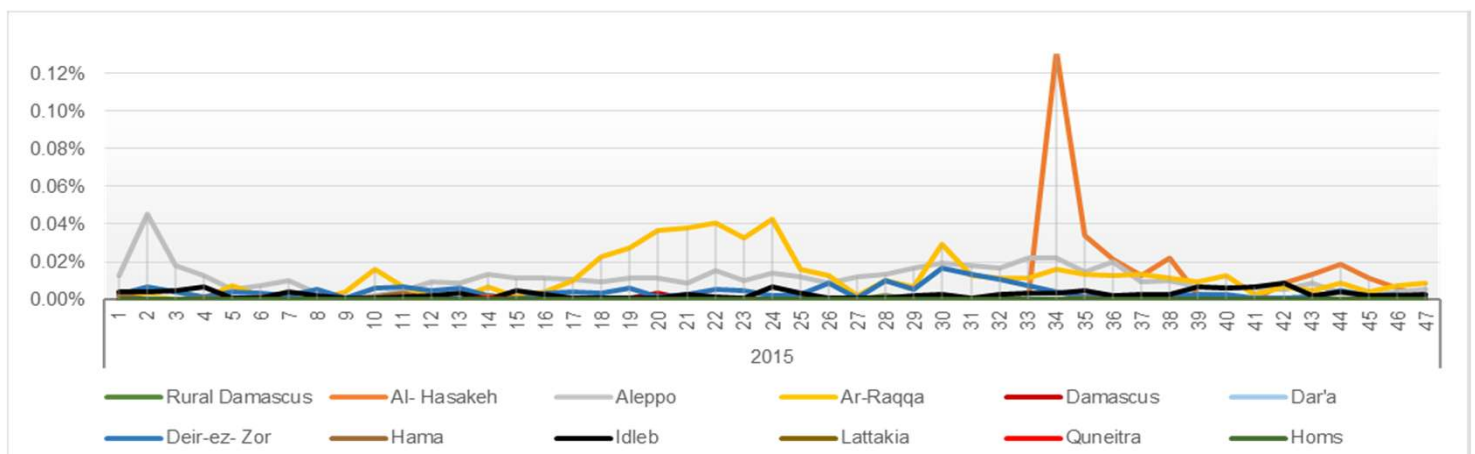
Trends for essential priority diseases in 12 governorates – Epi week 01-2015 to Epi week

47 - 2015



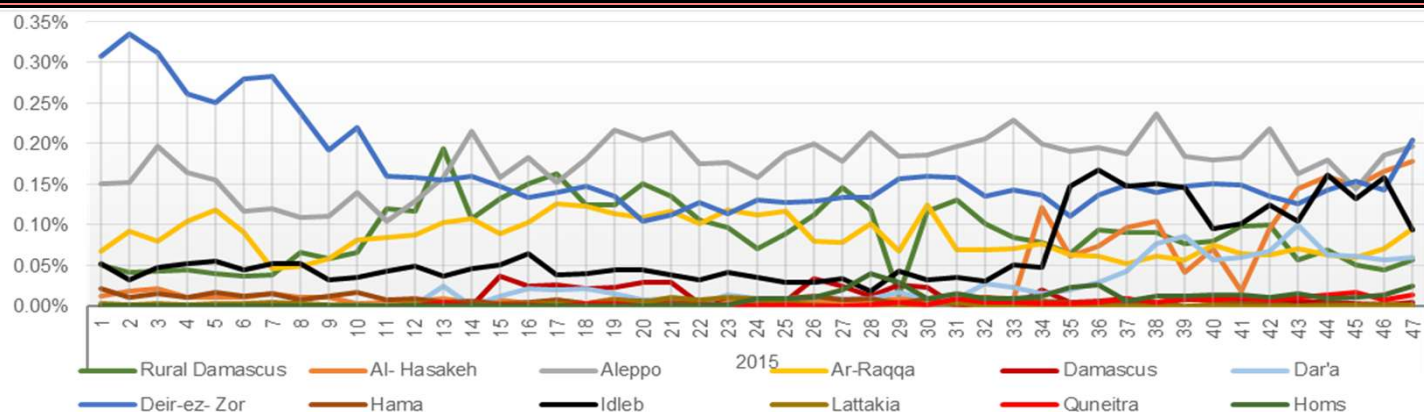
Proportional Morbidity of suspected Measles by Governorate, Epi Week

47 - 2015



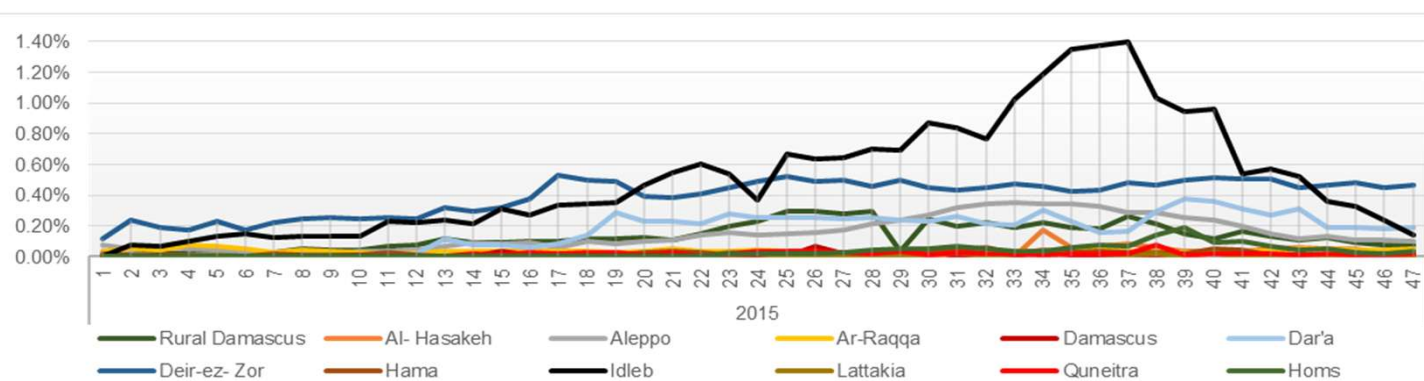
Proportional Morbidity of suspected AJS by Governorate, Epi Week

47 - 2015



Proportional Morbidity of suspected STF by Governorate, Epi Week

47 - 2015



Number of cases that EWARN observes by age & geographical area for Epi week

47 - 2015

| Governorate | | ABD | AWD | AJS | SARI | AFP | MEA | MEN | UCE | UXD | FUO | AD | ILI | LEISH | STF | OTHER | TOTAL |
|----------------|-----|-----|-----|------|------|-----|-----|-----|-----|-----|-----|------|-------|-------|------|--------|--------|
| Al- Hasakeh | < 5 | 132 | 0 | 145 | 47 | 0 | 0 | 35 | 166 | 3 | 36 | 821 | 1087 | 100 | 11 | 1237 | 7457 |
| | > 5 | 78 | 0 | 58 | 17 | 0 | 1 | 19 | 160 | 3 | 32 | 467 | 716 | 105 | 13 | 1968 | |
| Aleppo | < 5 | 40 | 0 | 132 | 62 | 0 | 2 | 9 | 24 | 0 | 3 | 1041 | 2925 | 64 | 37 | 10246 | 32888 |
| | > 5 | 22 | 0 | 93 | 23 | 0 | 4 | 2 | 34 | 0 | 14 | 630 | 1834 | 109 | 74 | 15464 | |
| Ar-Raqqa | < 5 | 34 | 0 | 73 | 92 | 0 | 1 | 5 | 13 | 0 | 0 | 329 | 134 | 19 | 6 | 3138 | 9055 |
| | > 5 | 5 | 0 | 35 | 5 | 0 | 9 | 6 | 6 | 0 | 0 | 188 | 172 | 22 | 55 | 4708 | |
| Damascus | < 5 | 0 | 0 | 0 | 0 | 0 | 0 | 0 | 0 | 0 | 0 | 16 | 0 | 0 | 0 | 320 | 673 |
| | > 5 | 0 | 0 | 5 | 0 | 0 | 0 | 0 | 0 | 0 | 0 | 2 | 0 | 0 | 0 | 330 | |
| Dar'a | < 5 | 3 | 0 | 30 | 1 | 0 | 0 | 0 | 42 | 0 | 0 | 153 | 91 | 0 | 31 | 5297 | 16099 |
| | > 5 | 1 | 0 | 38 | 3 | 0 | 0 | 0 | 121 | 0 | 0 | 160 | 179 | 3 | 181 | 9765 | |
| Deir-ez-Zor | < 5 | 99 | 0 | 156 | 63 | 0 | 1 | 14 | 43 | 0 | 21 | 1502 | 1794 | 70 | 77 | 4597 | 15805 |
| | > 5 | 27 | 0 | 77 | 11 | 0 | 1 | 6 | 55 | 0 | 20 | 847 | 1635 | 155 | 457 | 4077 | |
| Hama | < 5 | 0 | 0 | 0 | 16 | 0 | 0 | 0 | 0 | 0 | 1 | 113 | 160 | 9 | 0 | 1499 | 6324 |
| | > 5 | 1 | 0 | 0 | 4 | 0 | 0 | 0 | 0 | 0 | 2 | 99 | 209 | 52 | 2 | 4157 | |
| Homs | < 5 | 0 | 0 | 11 | 4 | 0 | 0 | 0 | 36 | 0 | 0 | 359 | 521 | 0 | 3 | 1651 | 6193 |
| | > 5 | 3 | 0 | 17 | 2 | 0 | 0 | 0 | 71 | 0 | 1 | 278 | 398 | 3 | 36 | 2799 | |
| Idleb | < 5 | 3 | 0 | 49 | 25 | 1 | 2 | 4 | 0 | 0 | 1 | 908 | 1918 | 112 | 20 | 9389 | 35212 |
| | > 5 | 6 | 0 | 58 | 29 | 0 | 1 | 3 | 26 | 0 | 0 | 819 | 2164 | 480 | 141 | 19053 | |
| Lattakia | < 5 | 1 | 0 | 1 | 0 | 0 | 0 | 0 | 0 | 0 | 0 | 13 | 19 | 0 | 0 | 169 | 882 |
| | > 5 | 2 | 0 | 0 | 0 | 0 | 0 | 0 | 0 | 0 | 0 | 8 | 24 | 0 | 5 | 640 | |
| Quneitra | < 5 | 0 | 0 | 4 | 0 | 0 | 0 | 0 | 0 | 0 | 0 | 12 | 2 | 0 | 3 | 176 | 597 |
| | > 5 | 1 | 0 | 11 | 0 | 0 | 0 | 0 | 0 | 0 | 0 | 37 | 18 | 0 | 18 | 315 | |
| Rural Damascus | < 5 | 0 | 0 | 11 | 12 | 0 | 0 | 0 | 71 | 0 | 2 | 56 | 17 | 14 | 14 | 2119 | 8111 |
| | > 5 | 0 | 0 | 54 | 17 | 0 | 0 | 1 | 119 | 0 | 1 | 68 | 22 | 0 | 73 | 5440 | |
| TOTAL | < 5 | 312 | 0 | 612 | 322 | 1 | 6 | 67 | 395 | 3 | 64 | 5323 | 8668 | 388 | 202 | 39838 | 139296 |
| | > 5 | 146 | 0 | 446 | 111 | 0 | 16 | 37 | 592 | 3 | 70 | 3603 | 7371 | 929 | 1055 | 68716 | |
| Grand total | | 458 | 0 | 1058 | 433 | 1 | 22 | 104 | 987 | 6 | 134 | 8926 | 16039 | 1317 | 1257 | 108554 | |

| Disease | Alert threshold | #HF reach threshold | # Cases | The most affected Communities-Districts |
|---------|-----------------|---------------------|---------|---|
| AFP | 1 | 1 | 1 | 1 Idleb |
| MEA | 1 | 22 | 22 | Ar-Raqqa 7 - Menbij 4 - Al Bab 2 - Al- Thwarah 2 - Al Mayadin 1 - Al Malika 1 - Al Ma'ra 1 - Deir-ez-Zor 1 - Harim 1 - Idleb 1 - Tell Abiad 1 |
| AJS | 5 | 71 | 1058 | Deir-ez- Zor 12 - Menbij 8 - Al- Hasakeh 6 - Quamishli 6 - Ras Al Ain 5 - Dar'a 4 - Idleb 4 - Al Mayadin 3 - Izra' 3 - Al Bab 2 - Al- Thwarah 2 - Ar-Raqqa 2 - A'zaz 2 - Quneitra 2 - Rural Damascus 2 - Afrin 1 - Al Malika 1 - Ar Rastan 1 - Duma 1 - Harim 1 - Jarablus 1 - Jebel Saman 1 - Jisr-Ash- Shugur 1 |
| STF | 5 | 74 | 1257 | Deir-ez- Zor 18 - Al Mayadin 8 - Abu Kamal 5 - Ar-Raqqa 5 - Izra' 5 - Rural Damascus 5 - Al Ma'ra 4 - Harim 4 - As Sanamayn 3 - Idleb 3 - Ar Rastan 2 - A'zaz 2 - Dar'a 2 - Quneitra 2 - Al-Hasakeh 1 - Ariha 1 - Duma 1 - Jebel Saman 1 - Qatana 1 - Tell Abiad 1 |
| ABD | 5 | 27 | 458 | Al- Hasakeh 7 - Ras Al Ain 5 - Abu Kamal 3 - Al Mayadin 3 - A'zaz 3 - Deir-ez- Zor 2 - Al Bab 1 - Al Malika 1 - Ar-Raqqa 1 - Quamishli 1 |
| SARI | 5 | 29 | 433 | Ar-Raqqa 9 - Abu Kamal 3 - Al Ma'ra 3 - Afrin 2 - Al Mayadin 2 - Al Bab 2 - Jisr-Ash- Shugur 2 - Al-Hasakeh 1 - Al Malika 1 - As Salamiyeh 1 - Ras Al Ain 1 - Rural Damascus 1 - Tell Abiad 1 |
| MEN | 5 | 5 | 104 | Al Malika 2 - Al- Hasakeh 1 - Deir-ez- Zor 1 - Quamishli 1 |
| LEISH | 50 | 4 | 1317 | Al Ma'ra 2 - Harim 1 - Jebel Saman 1 |

Response Activities

- The third quarterly meeting for DLOs was held in Gaziantep between 17-21 November, with MSF participation in cholera training . [For more details please see the extension.](#)
- Lice outbreak investigation in Anjarh schools - west rural Aleppo , the notification source is PHC of QRC in the town , EWARN team went there to investigate with participation of the managers of the schools and PHC within the Epi week 47.
The total number of the investigated cases was 520 (208 males and 312 females) with highest incidence in age group between 5-15 years.
Since the beginning of November, it has been noticed that the lice cases were clearly increased, with remarkable peak in the latest week.
The cases reported from Anjarh town schools mainly , with cases reported among famileis.
The risk factors for the lice infection are : the lack of health awareness and being shy of reviewing to the health facilities - the high prices of medicines - lack of hygiene due to lack of water.
EWARN team distributed education brochures related to treatment, prevention and promoting personal hygiene . And distributed the necessary medicines for children infected and their contacts . A recommendation to intensify the surveillance.

ABD=Acute Bloody Diarrhea

AWD=Acute Watery Diarrhea

AFP=Acute Flaccid Paralysis

AJS=Acute Jaundice Syndrome

SARI= Severe Acute Respiratory Illness

UXD=Unexplained Death

FUO=Fever Of Unknown Origin

MEA=suspected Measles

MEN= suspected Meningitis

UCE=Unexplained Cluster Of Health Events

AD=Acute Diarrhea

ILI= Influenza-like Illness