

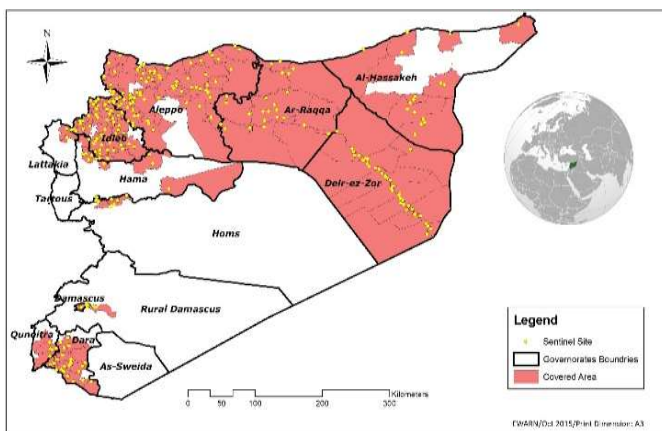
**Highlights**

- On 31 October, 10 years old female in Aleppo – Afrin died after one day of acute diarrhea ( not watery ) and vomiting , RDT was negative . On the examination mild bloody stool was seen, There are no similar cases found in the surroundings and the most probable cause of death is septicemia
- Implementation of the 1st round of polio campaign in Homs rural - Sokhneh and Tadmor on 4th November .
- During Epi-week no 45, 2015 96% (517/498) of the health facilities across 12 Governorates provided surveillance data 95% of reporting sites submitted the weekly reports on time.
- 4 sentinel sites have been added in Idleb where a lot of sentinel site in Hama has stopped due to security conditions
- The total number of consultations reported during this week was 152358 (including 40% children under the age of five) compared to 151341 consultations during week 44, 2015.
- In Epi week 45, 6 AFP (Acute Flaccid Paralysis) cases were reported : 2 in Aleppo, 2 in Idleb, 1 Da'ra and 1 in Qubeitra. Investigation for 230AFP cases were conducted since the beginning of 2015 up to date.

- For more details see weekly Acute Flaccid Paralysis Surveillance report.
- 28 suspected measles cases reported in this week, the alerts reported from Ras al ain(4 Alerts).
  - The number of STF cases (Suspected Typhoid Fever) was about 1689, the highest alerts were reported in Deir ez zor (17 alerts).
  - 1278cases of SARI reported in Epi Week 45, the highest alert were reported in Quamishli (12).
  - In Epi week 45: 11163 cases of Acute Diarrhea and 15475 cases of Influenza Like Illness were reported.
- ( AD cases number was duplicated in the following sub districts : (Hole - Abu Qalqal - Mansura - Damascus - Kisweh - Quatana)
- common diseases reported under *others* were : acute bronchiolitis (239), chicken pox (25), Brucellosis (12), Pertussis (12), Scabies, lice, mumps (12),leishmaniasis , Tonsillitis , Impetigo(2) and hand, foot and mouth disease (15) .
  - 1190 new cutaneous leishmaniasis cases reported this week, with alerts in Al Ma'ra 3 and Harim 1 .

**EWARN Coverage**

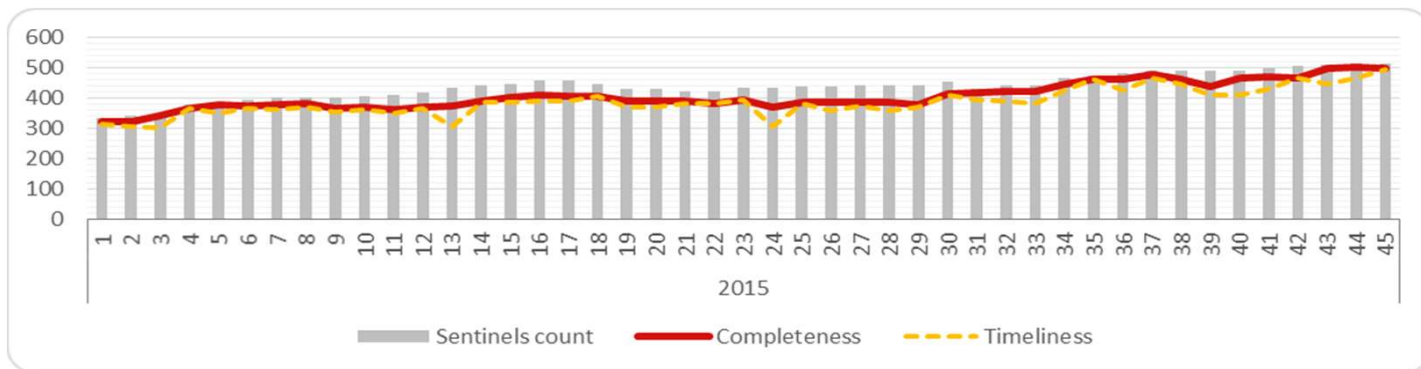
EWARN covers 110 Sub districts and 37 districts in 12 governorates.



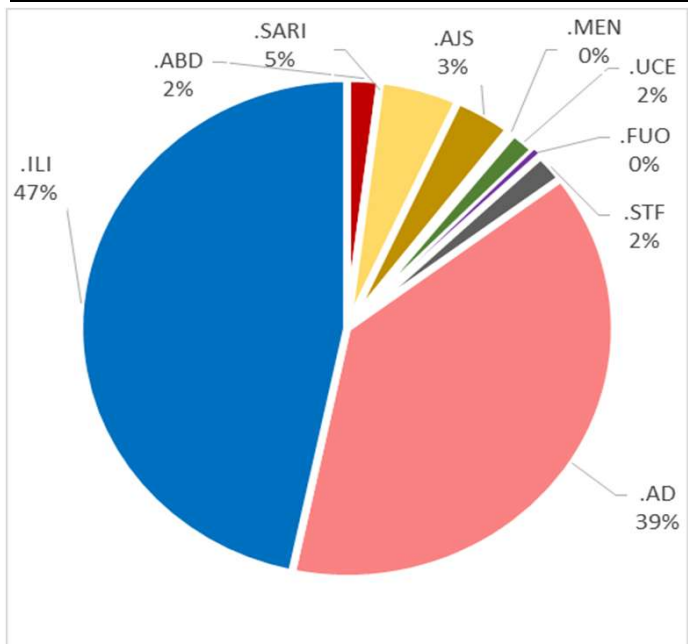
**Number of Sentinel Sites and Total Number of Consultations**

Governorate	# of sentinel	Reporting Sentinels		# of consultations
Al- Hasakeh	65	63	97%	9280
Aleppo	158	156	99%	41865
Ar-Raqqa	62	61	98%	8936
Damascus	3	2	67%	685
Dar'a	26	26	100%	15758
Deir-ez-Zor	57	55	96%	16276
Hama	13	7	54%	2702
Homs	10	8	80%	6034
Idleb	100	100	100%	41426
Lattakia	3	2	67%	750
Quneitra	5	3	60%	533
Rural Damascus	15	15	100%	8113
<b>Grand total</b>	<b>517</b>	<b>498</b>	<b>96%</b>	<b>152358</b>

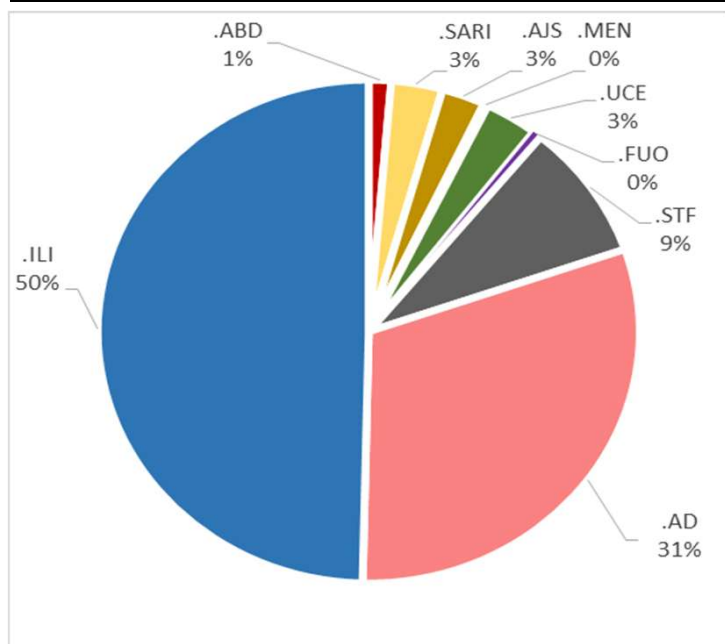
**Completeness and Timeliness**



**Percentage of EWARN Syndromes < 5Y**

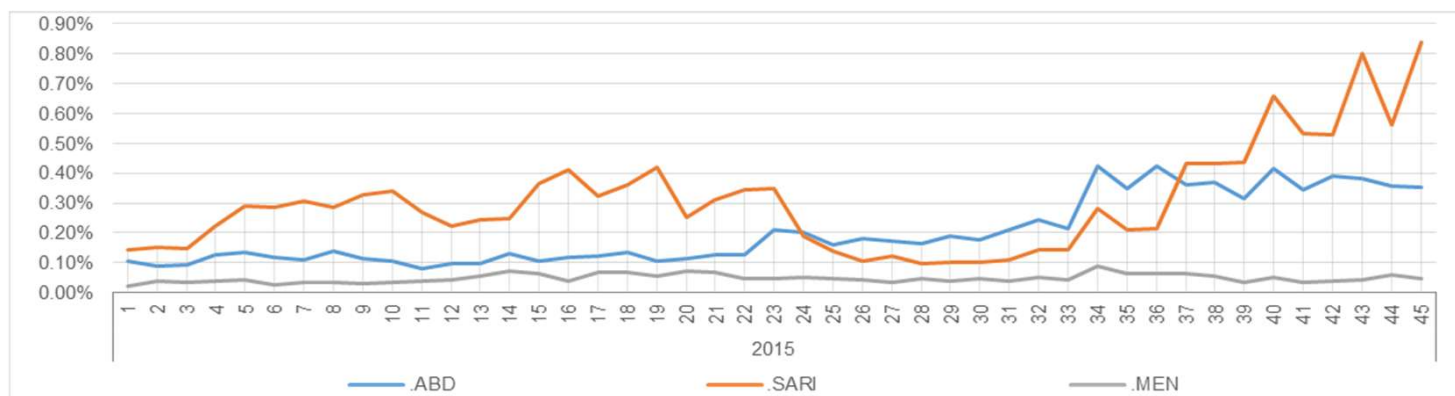


**Percentage of EWARN Syndromes >=5Y**



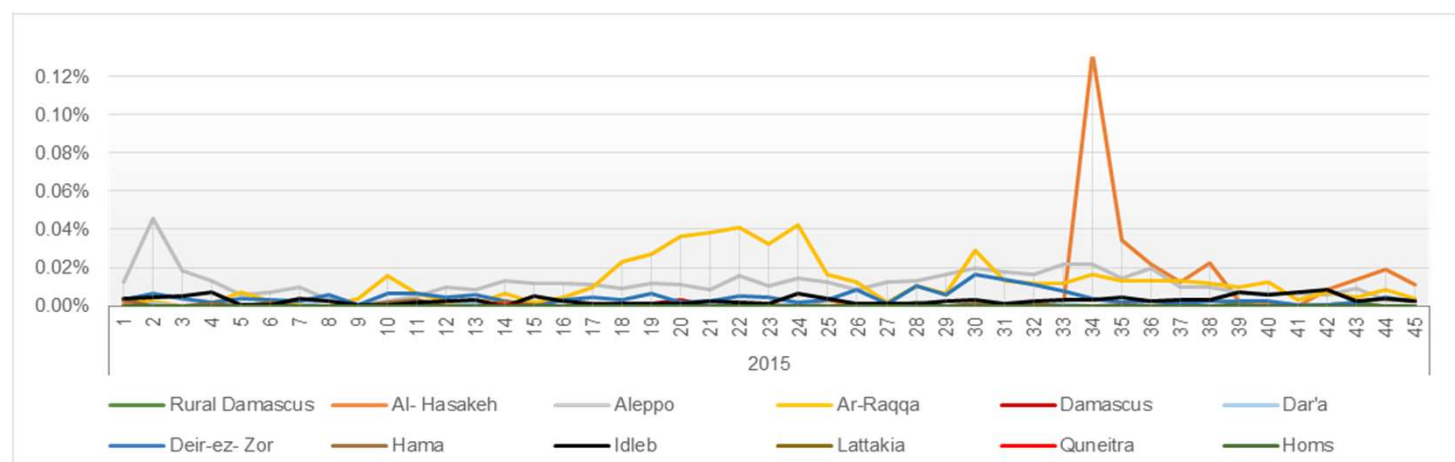
**Trends for essential priority diseases in 12 governorates – Epi week 01-2015 to Epi week**

**45 - 2015**



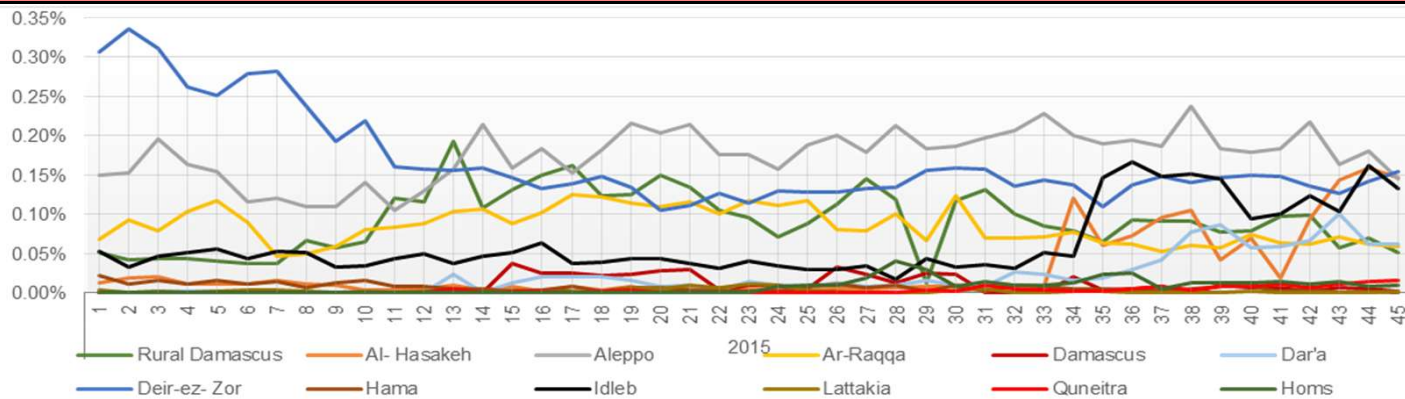
**Proportional Morbidity of suspected Measles by Governorate, Epi Week**

**45 - 2015**



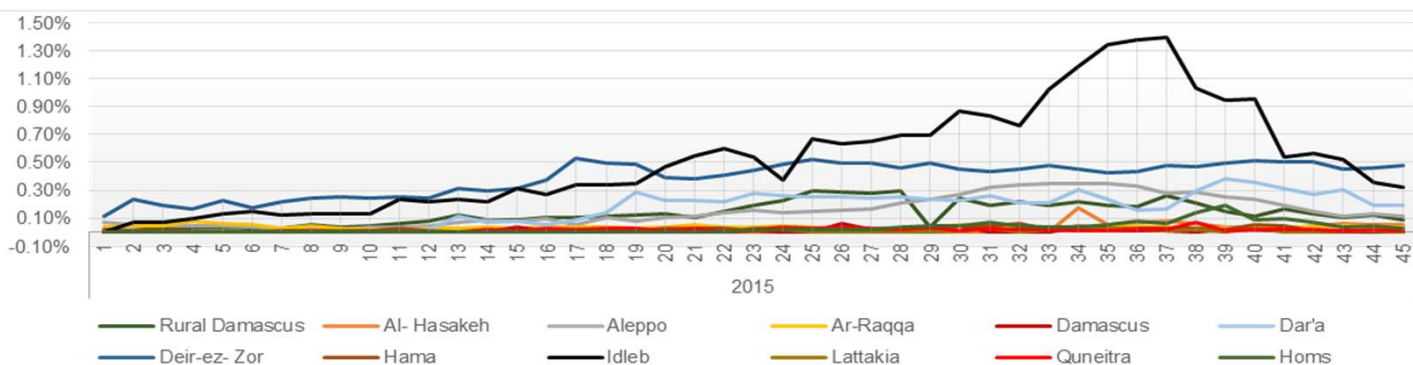
**Proportional Morbidity of suspected AJS by Governorate, Epi Week**

45 - 2015



**Proportional Morbidity of suspected STF by Governorate, Epi Week**

45 - 2015



**Number of cases that EWARN observes by age & geographical area for Epi week**

45 - 2015

Governorate		ABD	AWD	AJS	SARI	AFP	MEA	MEN	UCE	UXD	FUO	AD	ILI	LEISH	STF	OTHER	TOTAL
Al-Hasakeh	< 5	154	0	123	450	0	12	14	81	1	44	1091	873	56	23	1679	9280
	> 5	144	0	62	385	0	2	18	87	5	42	877	884	53	43	2077	
Aleppo	< 5	24	0	103	169	2	1	6	34	0	10	1384	2617	73	42	12955	41865
	> 5	19	0	79	25	0	2	4	70	1	13	922	2744	162	99	20305	
Ar-Raqqa	< 5	27	0	61	64	0	2	0	7	0	0	367	125	5	5	3080	8936
	> 5	7	0	14	4	0	3	4	0	0	2	123	129	14	45	4848	
Damascus	< 5	0	0	1	1	0	0	0	0	0	0	9	0	0	0	327	685
	> 5	0	0	2	1	0	0	0	0	0	0	4	1	0	0	339	
Dar'a	< 5	0	0	34	3	1	0	1	24	0	0	143	79	2	31	5208	15758
	> 5	2	0	44	3	0	0	0	149	0	1	244	210	2	211	9366	
Deir-ez-Zor	< 5	111	0	132	55	0	0	18	45	0	29	1770	1792	31	106	4706	16276
	> 5	31	0	62	11	0	3	6	64	1	12	1158	1316	93	498	4226	
Hama	< 5	1	0	0	2	0	0	0	0	0	0	79	127	4	0	825	2702
	> 5	0	0	1	1	0	0	0	0	0	0	57	196	26	1	1382	
Homs	< 5	1	0	5	7	0	0	0	38	0	0	362	443	1	4	1435	6034
	> 5	1	0	8	1	0	0	0	50	0	0	295	364	4	30	2985	
Idleb	< 5	8	0	103	32	1	3	3	33	0	0	1091	1603	189	78	11557	41426
	> 5	4	0	64	26	1	0	0	63	0	10	1037	1866	456	332	22866	
Lattakia	< 5	2	0	1	0	0	0	0	0	0	0	9	26	0	0	139	750
	> 5	0	0	1	0	0	0	0	0	0	0	8	29	0	5	530	
Quneitra	< 5	0	0	5	0	1	0	0	0	0	0	14	0	0	0	181	533
	> 5	0	0	16	0	0	0	0	0	0	0	35	1	0	14	266	
Rural Damascus	< 5	2	0	13	15	0	0	0	4	0	7	47	24	14	23	2184	8113
	> 5	0	0	51	23	0	0	0	10	0	4	37	26	5	93	5531	
TOTAL	< 5	330	0	581	798	5	18	42	266	1	90	6366	7709	375	312	44276	152358
	> 5	208	0	404	480	1	10	32	493	7	84	4797	7766	815	1371	74721	
Grand total		538	0	985	1278	6	28	74	759	8	174	11163	15475	1190	1683	118997	

Disease	Alert threshold	#HF reach threshold	# Cases	The most affected Communities-Districts
AFP	1	6	6	Aleppo 2 - Idleb 2 - Da'ra 1 - Quneitra 1
MEA	1	22	28	Ras Al Ain 4 - Ar-Raqqa 3 - Quamishli 3 - Al Mayadin 2 - Al- Thwarah 2 - Idleb 2 - Menbij 2 - Al-Hasakeh 1 - Ariha 1 - Deir-ez- Zor 1 - Jarablus 1
AJS	5	56	985	Deir-ez- Zor 9 - Menbij 6 - Ras Al Ain 6 - Jisr-Ash- Shugur 5 - Al Mayadin 4 - Al- Hasakeh 4 - Dar'a 4 - Idleb 3 - A'zaz 2 - Azraa 2 - Quamishli 2 - Al- Thwarah 1 - alrafid 1 - Ar Rastan 1 - Ariha 1 - Az Zabdani 1 - Duma 1 - Jebel Saman 1 - Quneitra 1 - Rural Damascus 1
STF	5	88	1683	Deir-ez- Zor 17 - Al Mayadin 9 - Dar'a 9 - Harim 9 - Abu Kamal 5 - Al Ma'ra 5 - Jisr-Ash- Shugur 4 - Rural Damascus 4 - Ar-Raqqa 3 - As Sanamayn 3 - Ar Rastan 2 - Azraa 2 - Izra' 2 - Jebel Saman 2 - Ras Al Ain 2 - Al Bab 1 - Al- Hasakeh 1 - alrafid 1 - Ariha 1 - Duma 1 - Idleb 1 - Lattakia 1 - Qatana 1 - Quamishli 1 - Tell Abiad 1
ABD	5	38	538	Ras Al Ain 10 - Al- Hasakeh 7 - Quamishli 7 - Abu Kamal 4 - Al Mayadin 3 - Al Bab 2 - Deir-ez- Zor 2 - Al Malika 1 - Ar-Raqqa 1 - A'zaz 1
SARI	5	58	1278	Quamishli 12 - Ras Al Ain 10 - Ar-Raqqa 7 - Al- Hasakeh 5 - Al Bab 4 - Al Malika 4 - Afrin 3 - A'zaz 3 - Jisr-Ash- Shugur 3 - Abu Kamal 1 - Ain Al Arab 1 - Dar'a 1 - Homs 1 - Idleb 1 - Qatana 1 - Rural Damascus 1
MEN	5	4	74	Al- Hasakeh 1 - Deir-ez- Zor 1 - Quamishli 1 - Ras Al Ain 1
LEISH	50	4	1190	Al Ma'ra 3 - Harim 1

## Response Activities

- ❖ Implementation of the 1st round of polio campaign in Homs rural - Sokhneh and Tadmor in between 4- 12 of November . The number of vaccinated children in 8447 in Sokhneh , Tadmor results is not published yet .
- ❖ Distribution copies from the weekly bulletin in the sentinel sites of Al Ma`ra , Ariha and Ain Alarab district.
- ❖ Preparation of the third quarterly meeting for the DLOs, which will be held on 17th November and we will publish more details later.

ABD=Acute Bloody Diarrhea

AWD=Acute Watery Diarrhea

AFP=Acute Flaccid Paralysis

AJS=Acute Jaundice Syndrome

SARI= Severe Acute Respiratory Illness

UXD=Unexplained Death

FUO=Fever Of Unknown Origin

MEA=suspected Measles

MEN= suspected Meningitis

UCE=Unexplained Cluster Of Health Events

AD=Acute Diarrhea

ILI= Influenza-like Illness