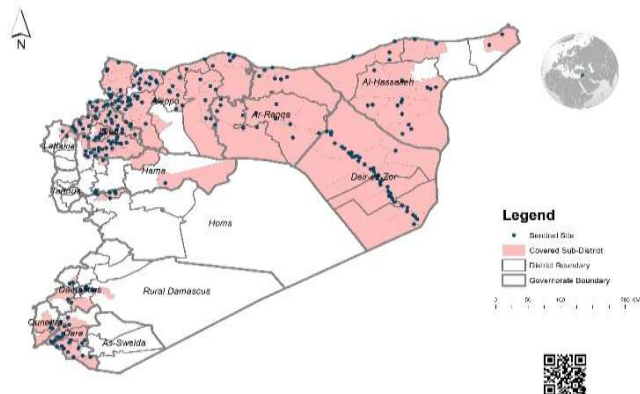


Highlights

- Third ERC was held on December 11th to classify 13 AFP cases, all these cases were classified as discarded.
- During Epi-week no 51, 2015 87% (529/460) of the health facilities across 12 Governorates provided surveillance data. 87% of reporting sites submitted the weekly reports on time. **one sentinel site has been added in Rural Damascus.**
- The total number of consultations reported during this week were 155544 (including 40% children under the age of five) compared to 157341 consultations during week 50, 2015.
- In Epi week 51, 2 AFP (Acute Flaccid Paralysis) cases were reported: 1 in Al Hasakeh - 1 in Deir-ez-zor. Investigation for 251 AFP cases were conducted since the beginning of 2015 up to date. **For more details see weekly Acute Flaccid Paralysis Surveillance report.**
- 32 suspected measles cases reported in this week, the highest alerts reported in Ar Raqqa district (6).
- The number of STF cases (Suspected Typhoid Fever) were 1159, the highest alerts were reported in Deir-ez- Zor (16).
- 408 cases of SARI reported in Epi Week 51, the highest alert were reported in Abu Kamal (3).
- In Epi week 51: 9741 cases of Acute Diarrhea were reported **for review high risk district for Acute Diarrhea please see the maps below.** and 19019 cases of Influenza Like Illness were reported.
- Common diseases reported under others were : acute bronchiolitis, chicken pox, Brucellosis, Pertussis, Scabies, lice, mumps, Tonsillitis, Impetigo and hand, foot and mouth disease.
- 2240 new cutaneous leishmaniasis cases reported this week, with alerts **Al Ma'ra 3 - Al- Hasakeh 1 - Al Malika 1 - Deir-ez- Zor 1 - Harim 1.**
- Lab investigation for suspected Measles case in Aleppo, and the result was negative.

EWARN Coverage

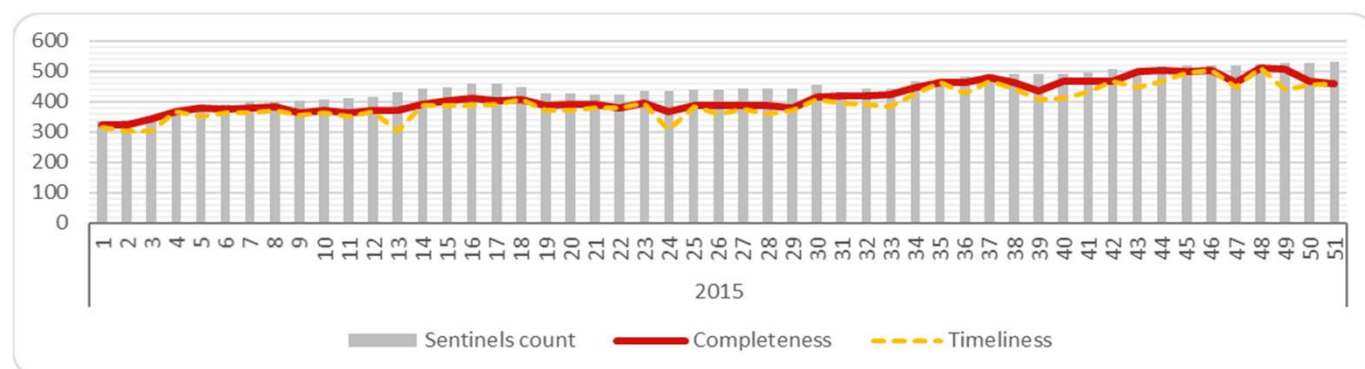
EWARN covers 130 Sub districts and 40 districts in 12 governorates.



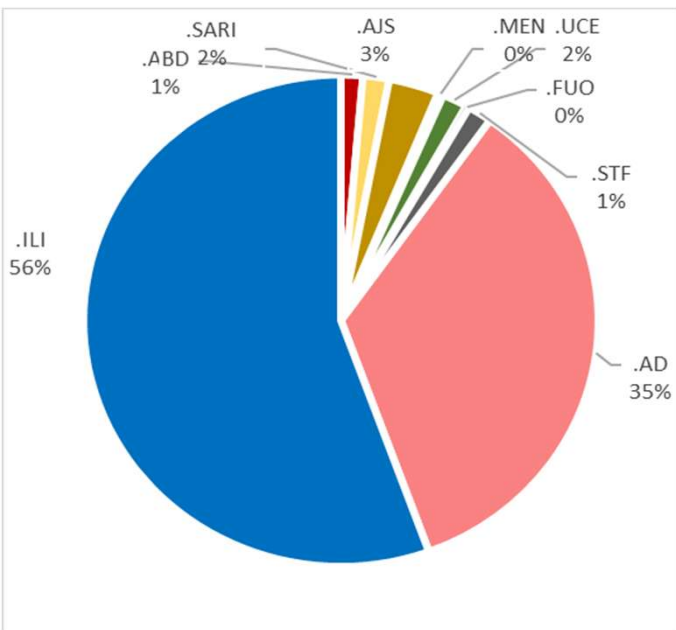
Number of Sentinel Sites and Total Number of Consultations

Governorate	# of sentinel s	Reporting Sentinel s (Completeness)	# of consultation s
Al- Hasakeh	65	59 91%	7760
Aleppo	161	120 75%	38058
Ar-Raqqa	65	55 85%	4953
Damascus	3	2 67%	386
Dar'a	27	26 96%	17303
Deir-ez-Zor	57	54 95%	17426
Hama	14	13 93%	6278
Homs	10	9 90%	6983
Idleb	103	101 98%	48198
Lattakia	3	2 67%	996
Quneitra	5	3 60%	769
Rural Damascus	16	16 100%	6434
Grand total	529	460 87%	155544

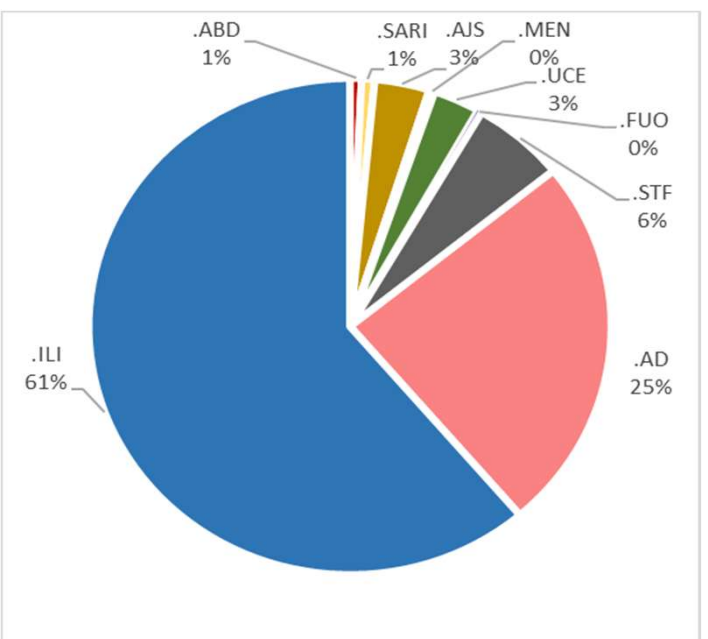
Completeness and Timeliness



Percentage of EWARN Syndromes < 5Y

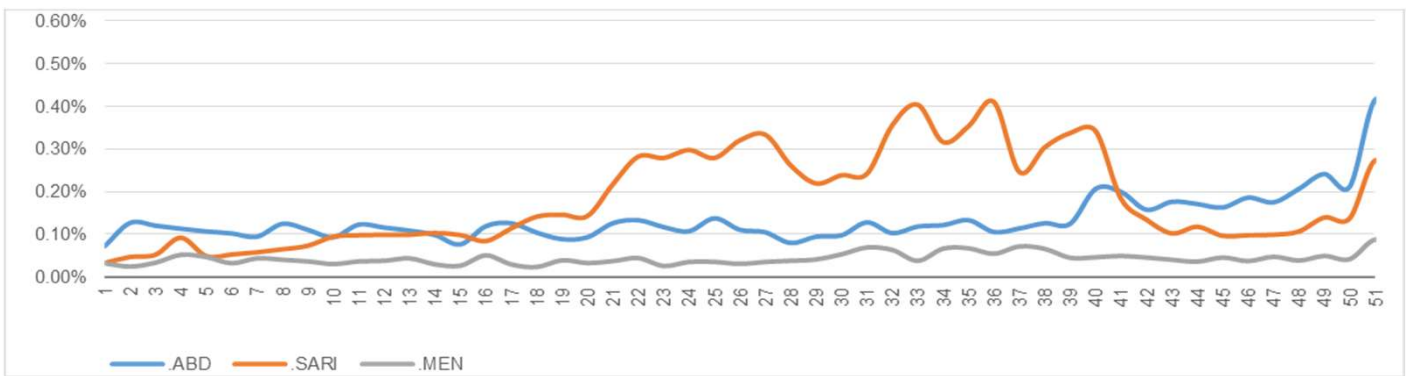


Percentage of EWARN Syndromes ≥ 5Y



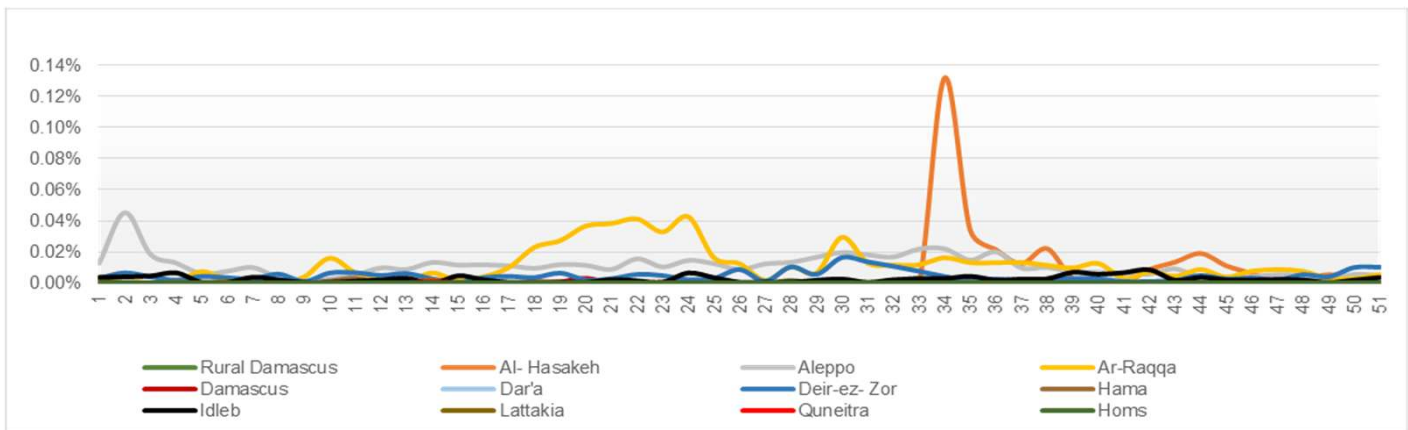
Trends for essential priority diseases in 12 governorates – Epi week 01-2015 to Epi week

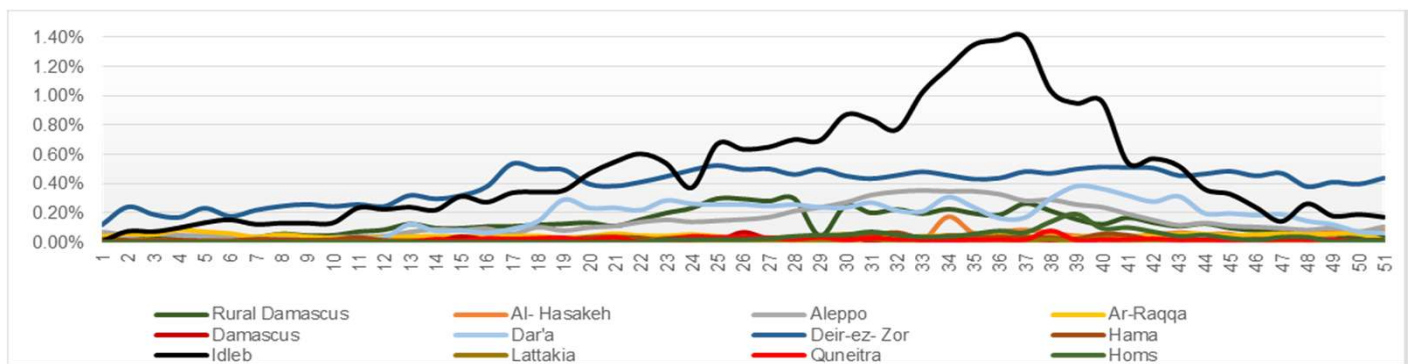
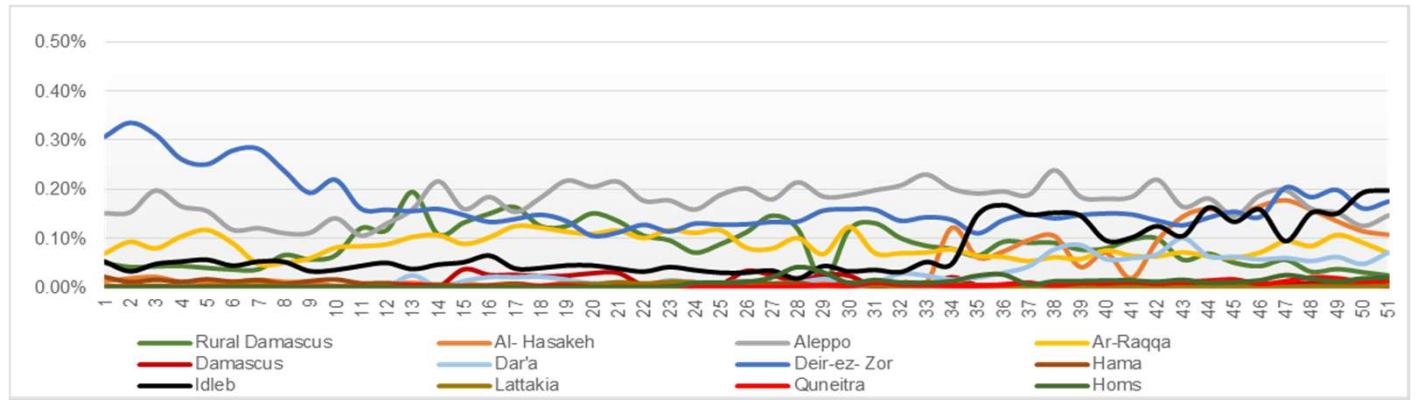
51 - 2015



Proportional Morbidity of suspected Measles by Governorate, Epi Week

51 - 2015

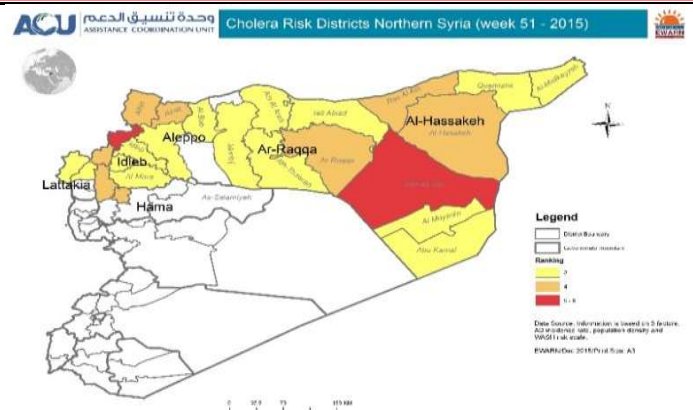
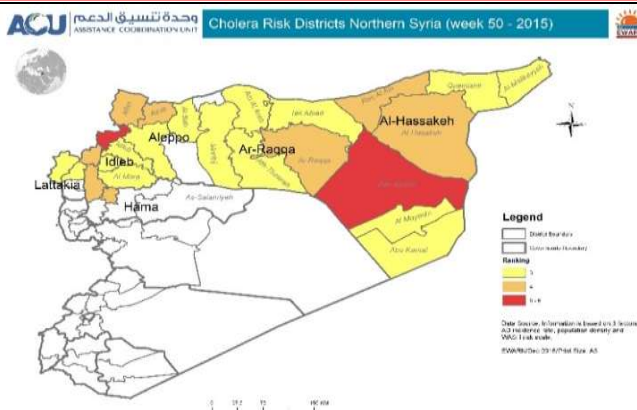




Governorate	AD	ABD	AWD	STF	AJS	ILI	SARI	AFP	MEA	MEN	UCE	UXD	FUO	LEISH	OTHER	TOTAL
Al-Hasakeh	< 5	858	115	0	62	95	1224	44	1	1	25	32	5	9	352	1217
	> 5	467	54	0	32	41	647	19	0	0	26	17	1	5	377	2034
Aleppo	< 5	738	26	0	49	76	2480	70	0	4	3	25	1	14	61	12786
	> 5	657	8	0	87	109	2783	14	0	2	2	54	0	3	146	17860
Ar-Raqqa	< 5	316	3	0	1	66	41	20	0	0	3	13	0	3	33	1533
	> 5	86	6	0	10	22	36	21	0	7	2	9	0	4	41	2677
Damascus	< 5	8	0	0	0	1	0	0	0	0	0	0	0	0	0	155
	> 5	14	0	0	0	11	0	0	0	0	0	0	0	0	0	197
Dar'a	< 5	730	3	0	16	44	117	2	0	0	0	9	0	1	0	5883
	> 5	233	4	0	57	46	163	8	0	0	0	21	0	2	4	9960
Deir-ez-Zor	< 5	1261	79	0	105	118	2345	63	1	8	11	52	0	9	112	4939
	> 5	644	29	0	447	104	2301	15	0	5	8	79	0	19	343	4329
Hama	< 5	121	1	0	1	1	241	5	0	0	0	0	0	1	15	1534
	> 5	93	1	0	13	0	285	10	0	0	0	0	0	4	62	3890
Homs	< 5	530	0	0	4	11	573	6	0	0	0	37	0	0	0	1871
	> 5	383	1	0	13	13	478	3	0	0	0	88	0	0	2	2970
Idleb	< 5	1182	7	0	15	111	2470	65	0	4	3	42	0	0	184	12736
	> 5	1113	6	0	200	138	2708	22	0	1	1	73	0	5	494	26618
Lattakia	< 5	17	0	0	0	0	19	0	0	0	0	0	0	0	0	219
	> 5	15	0	0	0	6	24	0	0	0	0	0	0	0	0	696
Quneitra	< 5	122	0	0	5	4	12	0	0	0	0	0	0	0	0	180
	> 5	31	0	0	8	14	29	0	0	0	0	0	0	0	1	363
Rural Damascus	< 5	60	0	0	6	11	16	8	0	0	0	59	0	2	6	1777
	> 5	62	0	0	28	21	27	13	0	0	0	106	0	0	7	4225
TOTAL	< 5	5943	234	0	264	538	9538	283	2	17	45	269	6	39	763	44830
	> 5	3798	109	0	895	525	9481	125	0	15	39	447	1	42	1477	75819
Grand total		9741	343	0	1159	1063	19019	408	2	32	84	716	7	81	2240	120649

Disease	Alert threshold	#HF reach threshold	# Cases	The most affected Communities-Districts
AFP	1	2	2	Al- Hasakeh 1 - Deir-ez-zor 1
MEA	1	22	32	Ar-Raqqa 6 - Menbij 4 - Deir-ez- Zor 3 - Al Mayadin 2 - Idleb 2 - Abu Kamal 1 - Al Bab 1 - Al Ma'ra 1 - Ariha 1 - Ras Al Ain 1
AJS	5	70	1063	Deir-ez- Zor 10 - Idleb 7 - Menbij 7 - Al Mayadin 5 - Al- Thwarah 4 - Dar'a 4 - Izra' 4 - Jisr-Ash- Shugur 4 - Quamishli 4 - Harim 3 - Ras Al Ain 3 - Al- Hasakeh 2 - A'zaz 2 - Jebel Saman 2 - Quneitra 2 - Abu Kamal 1 - Al Malika 1 - Ar Rastan 1 - Az Zabdani 1 - Damascus 1 - Jarablus 1 - Rural Damascus 1
STF	5	61	1159	Deir-ez- Zor 16 - Al Mayadin 10 - Abu Kamal 7 - Harim 4 - Izra' 3 - Ar Rastan 2 - A'zaz 2 - Idleb 2 - Jebel Saman 2 - Quamishli 2 - Al- Hasakeh 1 - Al Malika 1 - Ariha 1 - As Salamiyeh 1 - Az Zabdani 1 - Dar'a 1 - Jisr-Ash- Shugur 1 - Quneitra 1 - Ras Al Ain 1 - Rural Damascus 1 - Tell Abiad 1
ABD	5	20	343	Al- Hasakeh 7 - Ras Al Ain 4 - Abu Kamal 2 - Al Mayadin 2 - Deir-ez- Zor 2 - Al Malika 1 - Izra' 1 - Tell Abiad 1
SARI	5	26	408	Abu Kamal 3 - Jisr-Ash- Shugur 3 - Tell Abiad 3 - Al Mayadin 2 - Al Ma'ra 2 - As Salamiyeh 2 - Jebel Saman 2 - Al Bab 1 - Al- Hasakeh 1 - Al Malika 1 - Homs 1 - Idleb 1 - Qatana 1 - Quamishli 1 - Ras Al Ain 1 - Rural Damascus 1
MEN	5	3	84	Quamishli 2 - Deir-ez- Zor 1
LEISH	50	7	2240	Al Ma'ra 3 - Al- Hasakeh 1 - Al Malika 1 - Deir-ez- Zor 1 - Harim 1

Cholera Risk Scale



Response Activities

1. After the Acute diarrhea outbreak in Qaboon – Damascus , an awareness campaign for health workers and students in Qaboun , Harasta and Tishrien neighborhoods was done to educate the people about acute diarrhea and suspected cholera cases management through : distributing hundreds posters and brochures about : water treatment at home and safe storage , the management of acute diarrhea and cholera prevention methods , hand hygiene procedures and for **EWARN** case definitions. Those materials were distributed for **25** physician in **6** health facilities, in addition to **3** schools in the area.
2. Distributing **3000** copies of Cholera awareness posters and **50.000** brochures for health facilities staff in Qastun town and the surrounding villages in western and northern Hama.
3. Sharing copies from the weekly bulletin in the sentinel sites of : Rural Damascus – Dar`a – Quneitra - Al Ma`ra - Ariha and Ain Alarab districts.

ABD=Acute Bloody Diarrhea	AWD=Acute Watery Diarrhea	AFP=Acute Flaccid Paralysis	AJS=Acute Jaundice Syndrome	SARI= Severe Acute Respiratory Illness
UXD=Unexplained Death	FUO=Fever Of Unknown Origin	MEA=suspected Measles	MEN= suspected Meningitis	UCE=Unexplained Cluster Of Health Events
AD=Acute Diarrhea				
ILI= Influenza-like Illness				