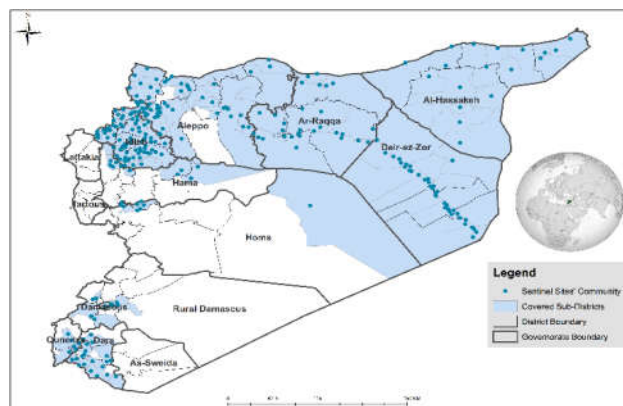


Highlights

- During EPI Week 48-2016 , 97% (511/528) of the health facilities across 11 Governorates reported to EWARN.
- 90% of reporting sites submitted the weekly reports on time.
The total number of consultations reported during this week were 184210 (40% of them children under 5 years old) compared to 178341 consultations during last week.
- One new AFP (Acute Flaccid Paralysis) case was reported in this week from Harim in Idleb.
- 29 suspected measles cases were reported this week, 22 out of which were from Ar-Raqqa governorate.
4 cases from Idleb were investigated in EWARN lab and one case from Saraqab was positive for Measles Igm
- EWARN lab investigated 7 suspected mumps cases, 3 of them were positive for Mumps Igm
lab investigation was conducted for 20 AJS cases (7 from Jisr-Ash-shugur. 8 from South of Idleb and 5 from Afrin) all were positive for HAV Igm
- The highest reported syndromes were: ILI (24466), AD (12 245) respectively and suspected typhoid fever (1342).
- Deir ez-Zor recorded the highest number of STF (738), followed by Ar-Raqqa and Idleb (160 & 122). The highest number of alerts were from Al Mayadin, Ar-Raqqa, Deir Ez-Zor and Abu Kamal districts.
- Cases of SARI continued increasing to reach 466 cases this week. Ar-Raqqa district reported the highest number of alerts (13).
The number of AD cases have doubled in the following sub district: Afrin - Muhradah - Ath-Thawrah
- Common diseases reported under others were : Pertussis, mumps, acute bronchiolitis, Allergic bronchiolitis, Brucellosis, Tonsillitis, chicken box, hand,foot and mouth disease, Impetigo, Scabies and lice.
- 1259 new cutaneous leishmaniasis cases were reported this week, Almaarah district reached alert threshold.
One confirmed visceral leishmaniasis case was reported by Mentor initiative from AIBAshiria in Idleb
In this week, 17 new TB cases reported
- EWARN DLOs are still following the adverse events (AEFI) of the third multi antigen vaccination campaign (AIRI3) in the north of Syria

EWARN Coverage

EWARN covers 118 Sub districts and 38 districts in 11 governorates.



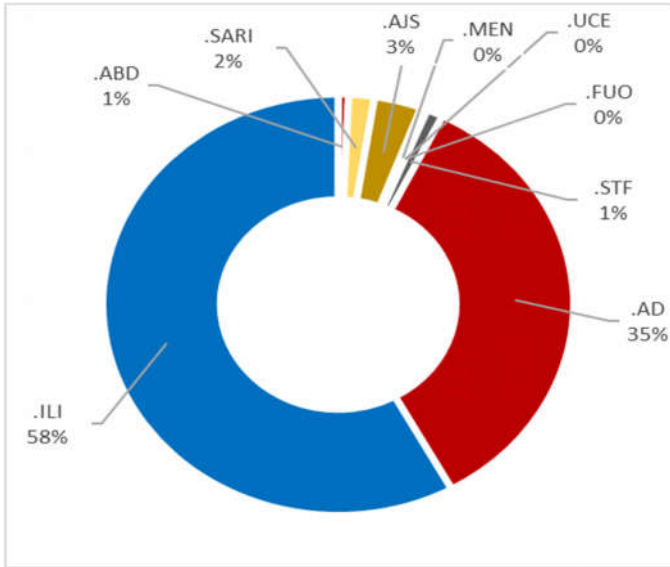
Number of Sentinel Sites and Total Number of Consultations

Governorate	# of sentinel	(Completeness)		# of consultations
		Reporting Sentinels	Percentage	
Aleppo	127	120	94%	27454
Al-Hasakeh	74	73	99%	8471
Ar-Raqqa	68	66	97%	16184
Damascus	2	2	100%	743
Dar'a	28	28	100%	24442
Deir-ez-Zor	52	52	100%	17816
Hama	15	15	100%	7876
Homs	12	11	92%	5333
Idleb	129	125	97%	65058
Quneitra	5	5	100%	2145
Rural Damascus	16	14	88%	8688
Grand total	528	511	97%	184210

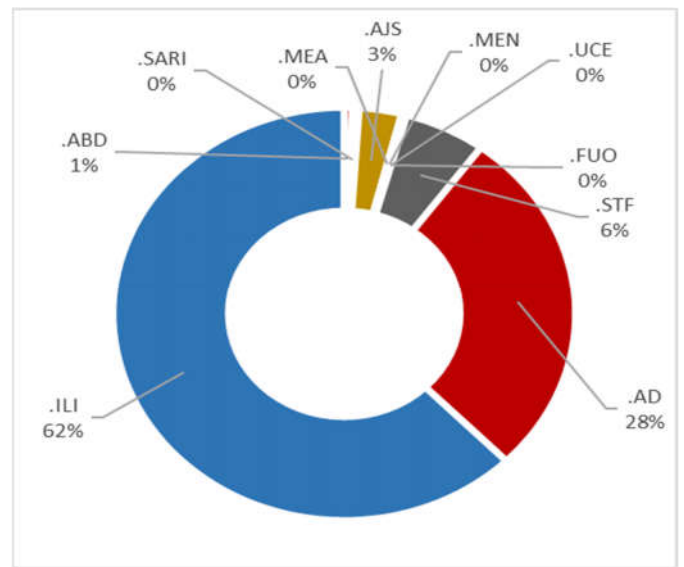
Completeness and Timeliness



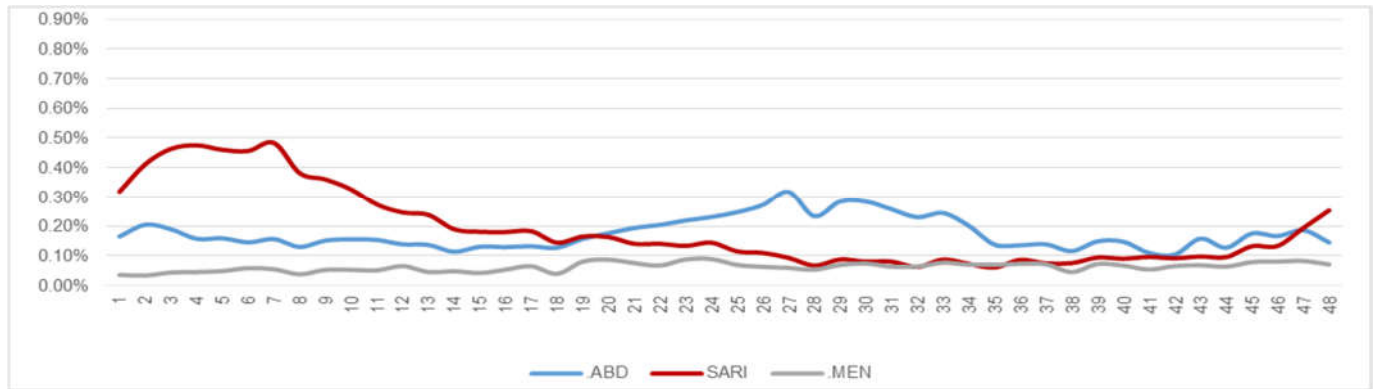
Percentage Syndromes < 5Y



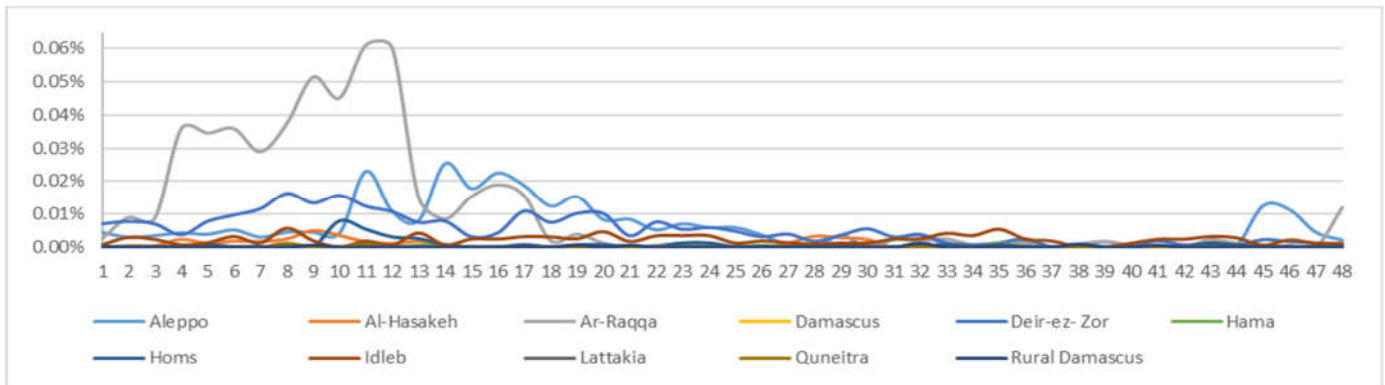
Percentage Syndromes ≥ 5Y



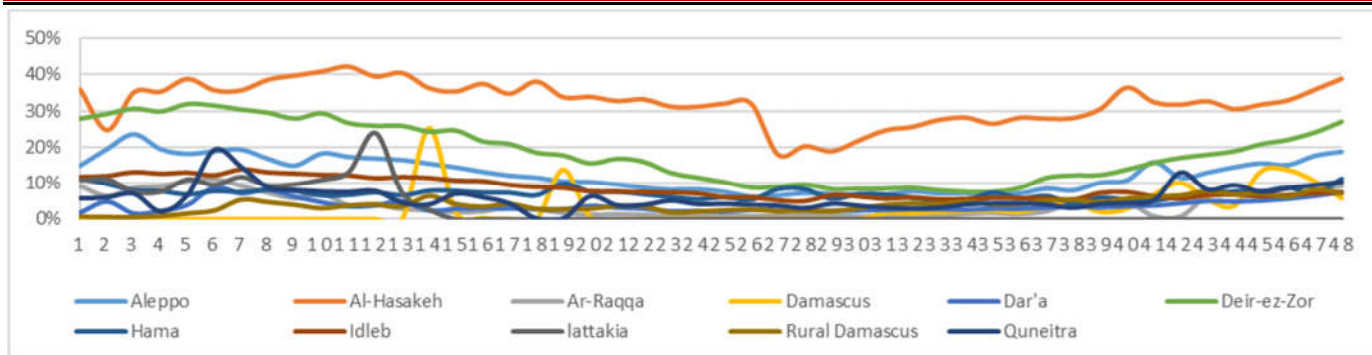
Trends for essential priority diseases



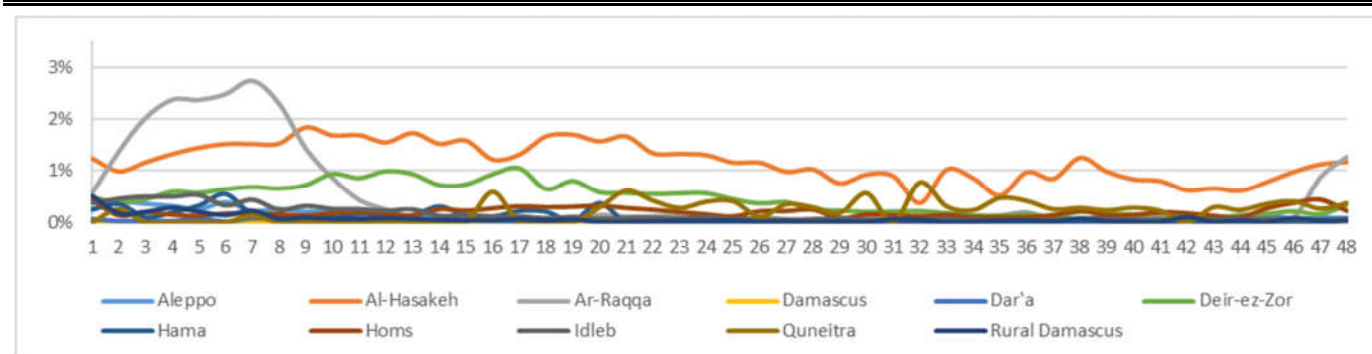
Proportional Morbidity of suspected Measles



Proportional Morbidity of ILI



Proportional Morbidity of SARI



Number of cases that EWARN observes by age & geographical area

Governorate	AD	ABD	AWD	STF	AJS	ILI	SARI	AFP	MEA	MEN	UCE	UXD	FUO	LEISH	OTHER	TOTAL
Aleppo	< 5	1194	13	0	4	84	2410	16	0	3	6	0	0	19	6378	27454
	≥ 5	859	3	0	25	74	2709	8	0	1	1	0	0	70	13577	
Al-Hasakeh	< 5	1310	62	0	23	71	1914	67	0	0	13	0	1	103	1198	8471
	≥ 5	906	46	0	22	75	1395	32	0	0	12	2	0	129	1087	
Ar-Raqqa	< 5	426	30	0	3	115	726	200	0	16	27	0	0	13	6036	16184
	≥ 5	333	30	0	157	70	747	5	0	6	35	0	0	126	7083	
Damascus	< 5	16	0	0	2	0	5	0	0	0	0	0	0	0	176	743
	≥ 5	20	0	0	6	3	38	0	0	0	0	0	0	0	477	
Dar'a	< 5	889	1	0	11	22	867	7	0	0	5	2	0	3	9050	24442
	≥ 5	764	3	0	102	44	963	10	0	0	1	0	0	7	11691	
Deir-ez-Zor	< 5	1329	42	0	154	306	2586	50	0	0	14	0	0	107	5264	17816
	≥ 5	578	21	0	584	209	2232	12	0	1	1	0	0	163	4163	
Hama	< 5	186	0	0	5	2	417	3	0	0	0	0	0	25	1802	7876
	≥ 5	204	1	0	11	2	479	2	0	0	0	0	0	55	4682	
Homs	< 5	206	2	0	5	18	669	5	0	0	4	0	0	5	1743	5333
	≥ 5	163	1	0	8	4	582	7	0	0	4	0	0	11	1896	
Idleb	< 5	1538	3	0	17	70	2482	28	1	2	3	0	1	123	19006	65058
	≥ 5	1270	6	0	105	69	2412	4	0	0	1	0	0	362	37555	
Quneitra	< 5	165	0	0	7	1	97	4	0	0	3	0	0	0	772	2145
	≥ 5	88	1	0	44	14	122	4	0	0	2	0	0	0	821	
Rural Damascus	< 5	206	0	0	12	6	307	1	0	0	1	0	0	0	1978	8688
	≥ 5	117	0	0	35	7	307	1	0	0	0	0	0	0	5710	
TOTAL	< 5	7465	153	0	243	695	12480	381	1	21	76	2	2	398	53403	184210
	≥ 5	5302	112	0	1099	571	11986	85	0	8	57	2	0	1	923	
Grand total		12767	265	0	1342	1266	24466	466	1	29	133	4	2	3	1321	142145

Number and distribution of alerts reported				
Disease	Alert threshold	#HF reach threshold	# Cases	The most affected Communities-Districts
AFP	1	1	1	Harim 1
Mea	1	19	29	Ar-Raqqa 13 , Menbij 2 , Abu Kamal 1 , A'zaz 1 , Harim 1 , Idleb 1
AJS	5	71	1266	Al Mayadin 15 , Ar-Raqqa 13 , Abu Kamal 12 , Deir-ez-Zor 10 , Menbij 5 , A'zaz 4 , Izra' 3 , Dar'a 2 , Harim 2 , Idleb 2 , Al Ma'ra 1 , Az-Zabdani 1 , Tell Abiad 1
STF	5	69	1342	Al Mayadin 14 , Ar-Raqqa 14 , Abu Kamal 9 , Deir-ez-Zor 9 , Dar'a 3 , Izra' 3 , Jisr-Ash-Shugur 3 , Quneitra 3 , Az-Zabdani 2 , Harim 2 , Al Ma'ra 1 , Ar-Rastan 1 , Damascus 1 , Hama 1 , Idleb 1 , Jebel Saman (Aleppo) 1 , Rural Damascus 1
ABD	5	8	265	Al Mayadin 3 , Ar-Raqqa 3 , Abu Kamal 1 , Ras Al Ain 1
SARI	5	18	466	Ar-Raqqa 13 , Al Mayadin 1 , Deir-ez-Zor 1 , Idleb 1 , Ras Al Ain 1 , Tell Abiad 1
MEN	5	1	133	Al Mayadin 1
LEISH	50	1	1321	Al Ma'ra 1

Response Activities

1-EWARN DLOs are still following the adverse events (AEFI) of the multi antigen vaccination campaign (AIR13) in Idleb, north of Hama, north of Homs and Afrin in Aleppo. We are coordinating with SIG on daily base to keep them posted regarding the AEFI cases.

2- EWARN team conducted outbreak investigation for Mumps outbreak in south of Aleppo in ALTalafih village (AlZirbah subdistrict). Outbreak emerged from primary school student and 27 cases documented in the line list. the most of them between 5 to 10 years old with incomplete vaccination status. seven samples collected and 3 of them were positive for Mumps Igm. symptomatic treatment provided for cases of ALTalafih health centre.

ABD=Acute Bloody Diarrhea

AWD=Acute Watery Diarrhea

AFP=Acute Flaccid Paralysis

AJS=Acute Jaundice Syndrome

SARI= Severe Acute Respiratory Illness

UXD=Unexplained Death

FUO=Fever Of Unknown Origin

MEA=suspected Measles

MEN= suspected Meningitis

UCE=Unexplained Cluster Of Health Events

AD=Acute Diarrhea

ILI= Influenza-like Illness