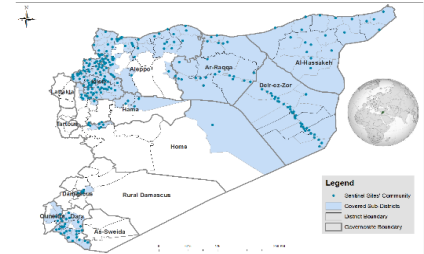
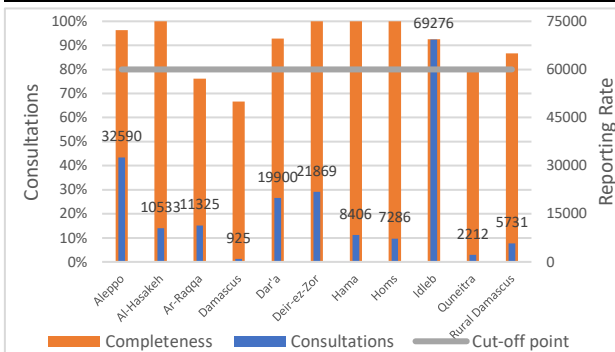


Highlights

- The first quarterly meeting of DLOs and field response team was held in Gaziantep in between 14-18 March. The titles included : AFP and VPDs indicators , in addition to the methodology of vaccine coverage survey in the coverage areas.
- During Epi Week 12, (486/521) 93% of the health facilities across 11 Governorates provided surveillance data for all EWARN Syndroms this week 93% of reporting sites submitted the weekly reports on time.
[For more details regarding EWARN coverage please click here.](#)
- The consultations reported this week were 190053 (including 40% children under the age of five) compared to 199112 consultations in previous week.
- 10 AFP (Acute Flaccid Paralysis) cases were reported: 4 Idleb - 3 Al-Hasakeh - 1 Aleppo - 1 Dar'a - 1 Quneitra [For more details click here.](#)
- EWARN lab reported 25 positive cases for Measles IgM in : Harim 4 - Jisr AshShugur 3 - Al-Bab 12 and Jarablus 6.
- The number of SARI cases was 580 with highest number of alerts in Abu Kamal (12 alerts).
- The number of OAD cases doubled in : **As-Safira**
- The highest syndromes reported were respectively: ILI (24247), OAD (11202) and STF (1459).
- Deir Ez-Zor governorate reported the highest proportional morbidity of STF (3.8%) and the highest proportional morbidity of AJS (1.2%).
- Al-Hasakeh governorate recorded the highest proportional morbidity of OAD (17.6%) and ILI (40.4%).

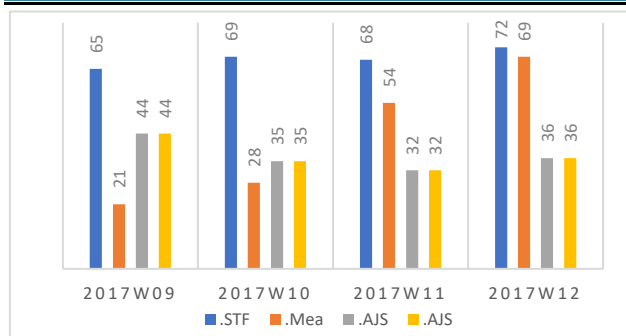


Reporting Rate and Consultations

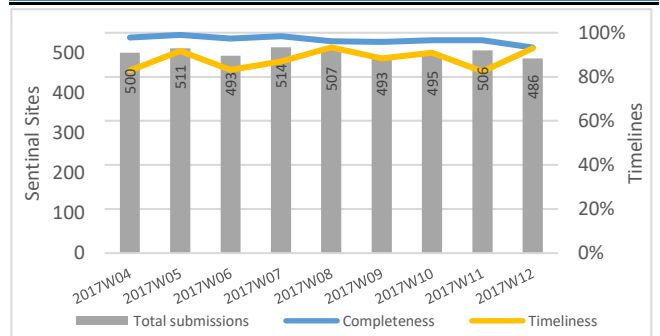


Governorate	Reporting Sites	No. Sentinal Sites	Completeness
Aleppo	103	107	96%
Al-Hasakeh	91	91	100%
Ar-Raqqa	48	63	76%
Damascus	2	3	67%
Dar'a	26	28	93%
Deir-ez-Zor	49	49	100%
Hama	15	15	100%
Homs	12	12	100%
Idleb	123	133	92%
Quneitra	4	5	80%
Rural Damascus	13	15	87%
Total	486	521	93%

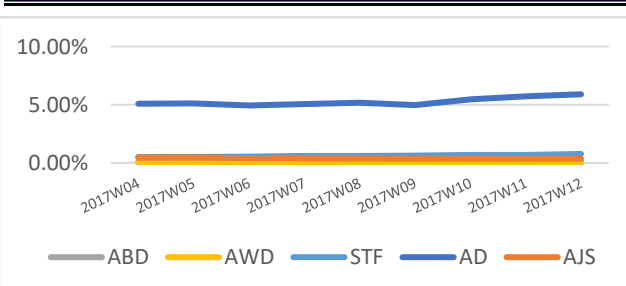
Numbers of Top 4 Alerts



Reporting Rate and Timeliness



Prop. Morb. of Water Borne Diseases

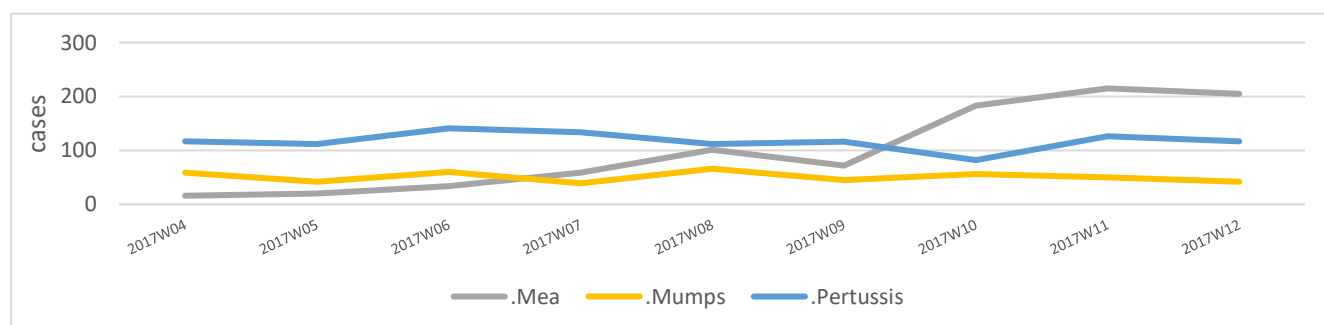


Water Borne Diseases details

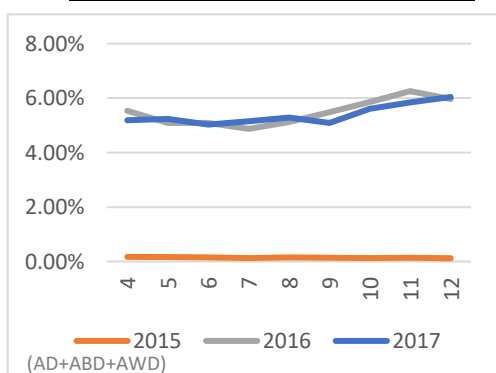
- EWARN informed partners & WASH team about the districts with high WBD levels.
- The number of the reported STF cases was 1350 , as well as 696 new cases of AJS were reported .
- EWARN reported 11382 OAD cases, the number of OAD cases doubled only in : **As-Safira**
- Cholera Risk scale is being generated and followed on weekly basis in the northern of Syria.

Vaccine Preventable Diseases details

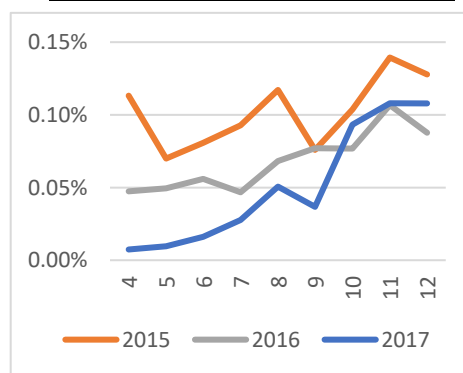
- In Epi-week 12 / 2017, 205 suspected measles cases were reported. 47 cases were investigated (A'zaz 12, Al Bab 8, Jisr-Ash-shugur 8, Harim 8, Quneitra 4, Dar'a 1, Idleb 1, Menbij 1, Tell Abiad 1, Jarablus 1, Al-Hasakeh 1, Izra' 1). 34 specimens were collected for the Laboratory diagnosis.
- Raise in the number of suspected Measles cases was noted in Idleb Governorate as of Epi-week 07/2017 (66 suspected cases were reported between Epi-weeks 7-12), most of the cases were reported from Jisr-Ash-Shugur District (3 out of 4 sampled cases in epi-week 12/2017 were positive Measles IgM). Recommendation for cases isolation, personal hygiene, Vit A administration and explanation on the role and importance of vaccination took place.
- It is recommended considering implementation of measles vaccination campaign (based on extent of outbreak and susceptible population identified and most affected age groups).
- The numbers of the reported suspected Pertussis cases was 117, The highest number reported from Abu Kamal district (30 cases).
- The numbers of the reported suspected Mumps cases was 42, The highest number reported from Ar Raqqa district (10 cases).



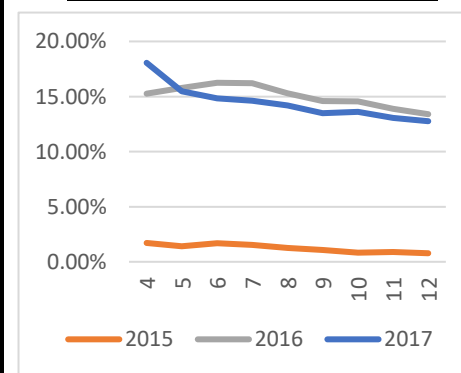
Prop. Morb. of Diarrheal Diseases



Prop. Morb. of Measles



Prop. Morb. of ILI



Case Numbers By Governorate and Age

Gov. & Age	OAD	ABD	AWD	STF	AJS	ILI	SARI	AFP	Mea	Men	UCE	UCD	Leish	Others	Total	
Aleppo	<5	1137	11	0	2	22	2841	4	1	14	2	0	0	62	6958	11054
	≥5	913	11	0	38	49	2519	4	0	23	2	0	1	168	17808	21536
Idleb	<5	1414	7	0	40	57	2962	66	3	12	6	0	1	181	18535	23284
	≥5	1379	9	0	172	60	3083	25	1	6	6	0	0	432	40819	45992
Hama	<5	106	0	0	5	0	430	3	0	0	0	0	0	19	1756	2319
	≥5	150	1	0	21	1	566	2	0	0	0	0	0	53	5293	6087
Ar-raqqa	<5	245	15	0	45	54	138	5	0	12	58	1	1	39	4637	5250
	≥5	228	21	0	145	36	150	8	0	6	23	0	3	58	5397	6075
Deir-ez-Zor	<5	1436	66	0	105	141	2535	228	0	23	24	0	0	132	6443	11133
	≥5	830	55	0	736	111	1842	56	0	13	2	0	0	211	6880	10736
Al-Hasakeh	<5	1092	48	0	17	53	2416	78	2	0	19	2	0	76	2106	5909
	≥5	763	27	0	26	61	1839	33	1	0	13	0	0	130	1731	4624
Homs	<5	123	0	0	9	8	443	20	0	1	3	0	0	8	2321	2936
	≥5	140	0	0	12	4	532	17	0	0	5	0	0	5	3635	4350
R. Damascus	<5	42	0	0	6	0	277	2	0	56	0	1	6	0	1428	1818
	≥5	33	0	0	20	3	280	2	0	26	0	0	0	0	3549	3913
Damascus	<5	9	0	0	0	0	2	0	0	6	0	0	0	0	178	195
	≥5	18	0	0	4	5	35	0	0	0	0	0	0	0	668	730
Dar'a	<5	545	3	0	4	9	614	16	1	3	5	0	0	0	7678	8878
	≥5	426	4	0	44	16	559	8	0	1	3	0	0	5	9956	11022

Quneitra	<5	99	1	0	0	1	88	0	1	0	0	0	0	0	941	1131
	≥5	74	0	0	8	5	96	3	0	3	2	0	0	0	890	1081
Total		11202	279	0	1459	696	24247	580	10	205	173	4	12	1579	149607	190053

Alerts' Numbers by District

District	ABD	AWD	AJS	STF	SARI	Leish	Men	Mea	AFP	Total
Abu Kamal	0	0	6	14	12	0	0	1	0	33
Afrin	0	0	0	0	0	0	0	0	0	0
Ain Al Arab	0	0	0	0	0	0	0	1	0	1
Al Bab	0	0	0	0	0	0	0	2	0	2
Al Ma'ra	0	0	1	2	2	1	0	0	3	9
Al Mayadin	2	0	10	14	7	0	0	5	0	38
Al-Hasakeh	0	0	0	0	0	0	0	0	2	2
Al-Malikeyyeh	0	0	0	0	0	0	0	0	0	0
Ariha	0	0	0	0	1	0	0	1	0	2
Ar-Raqqa	1	0	1	10	0	0	0	12	0	24
Ar-Rastan	0	0	0	0	1	0	0	0	0	1
As-Salamiyeh	0	0	0	1	0	0	0	0	0	1
As-Sanamayn	0	0	0	0	0	0	0	0	0	0
As-Suqaylabiyah	0	0	0	0	0	0	0	0	0	0
Ath-Thawrah	0	0	0	0	0	0	0	4	0	4
A'zaz	0	0	0	0	0	0	0	10	0	10
Damascus	0	0	0	0	0	0	0	1	0	1
Dar'a	0	0	2	3	1	0	0	2	1	9
Deir-ez-Zor	6	0	9	11	6	0	1	5	0	38
Duma	0	0	0	0	0	0	0	1	0	1
Hama	0	0	0	1	0	0	0	0	0	1
Harim	0	0	0	6	2	0	0	4	1	13
Homs	0	0	0	0	1	0	0	0	0	1
Idleb	0	0	3	5	2	0	0	1	0	11
Izra'	0	0	0	0	0	0	0	1	0	1
Jarablus	0	0	0	0	0	0	0	2	0	2
Jebel Saman (Aleppo)	0	0	0	2	0	0	0	0	1	3
Jisr-Ash-Shugur	0	0	1	0	0	0	0	2	0	3
Menbij	0	0	2	0	0	0	0	3	0	5
Muhradah	0	0	0	0	0	0	0	0	0	0
Quamishli	0	0	1	0	0	0	0	0	0	1
Quneitra	0	0	0	0	0	0	0	1	1	2
Ras Al Ain	0	0	0	0	0	0	0	0	1	1
Rural Damascus	0	0	0	2	0	0	0	9	0	11
Tadmor	0	0	0	0	0	0	0	1	0	1
Tell Abiad	0	0	0	1	1	0	0	0	0	2
As-Safira	0	0	0	0	0	0	0	0	0	0
Grand Total	9	0	36	72	36	1	1	69	10	234

Ps: The colored cells represent the highest alerts for each surveyed syndrome on district level

Lab Activities Epi Week 12

Syndrome	No. of Sampels	No. of positive samples	Positive sample distribution (District)
Measles IgM	31	25	12 Al-Bab + 6 Jarablus + 4 Harim + 3 Jesr'Alshugor

All negative samples for Measles IgM were also negative for Rubella IgM

Abbreviations

ABD	Acute Bloody Diarrhea	Mea	suspected Measles
OAD	Other Acute Diarrhea	Men	suspected Meningitis
AFP	Acute Flaccid Paralysis	rop.Morb	Proportional Morbidity
AJS	Acute Jaundice Syndrome	SARI	Severe Acute Respiratory Illness
AWD	Acute Watery Diarrhea	UCE	Unexplained Cluster Of Health Events
ILI	Influenza-like Illness	UCD	Unexplained Death
WASH	Water Sanitation Hygine	WBD	Water Borne Diseases
VPD	Vaccine Preventable Diseases	ARI	Acute Respiratory Illness