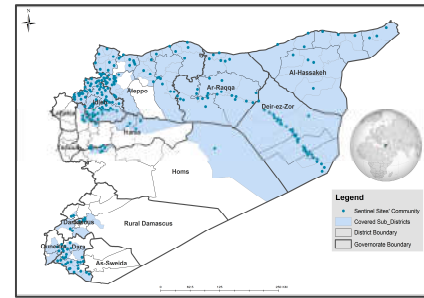


Highlights

2015

- » (267) AFP cases have been reported.
- » No new Polio (WPV) has been detected in 2015, nor compatible cases.
- » One aVDPV was isolated from a case reported from Deir-ez-Zor. No other AFP cases were detected despite the enhancement of surveillance. The case was considered as an event, surveillance continues to be enhanced in Syria.
- » Key surveillance indicators: Non-polio AFP rate (5.1), Stool Adequacy rate (79%), NPEV Isolation rate (15%) and Sabin-like Virus Isolation (1.5%).



2016

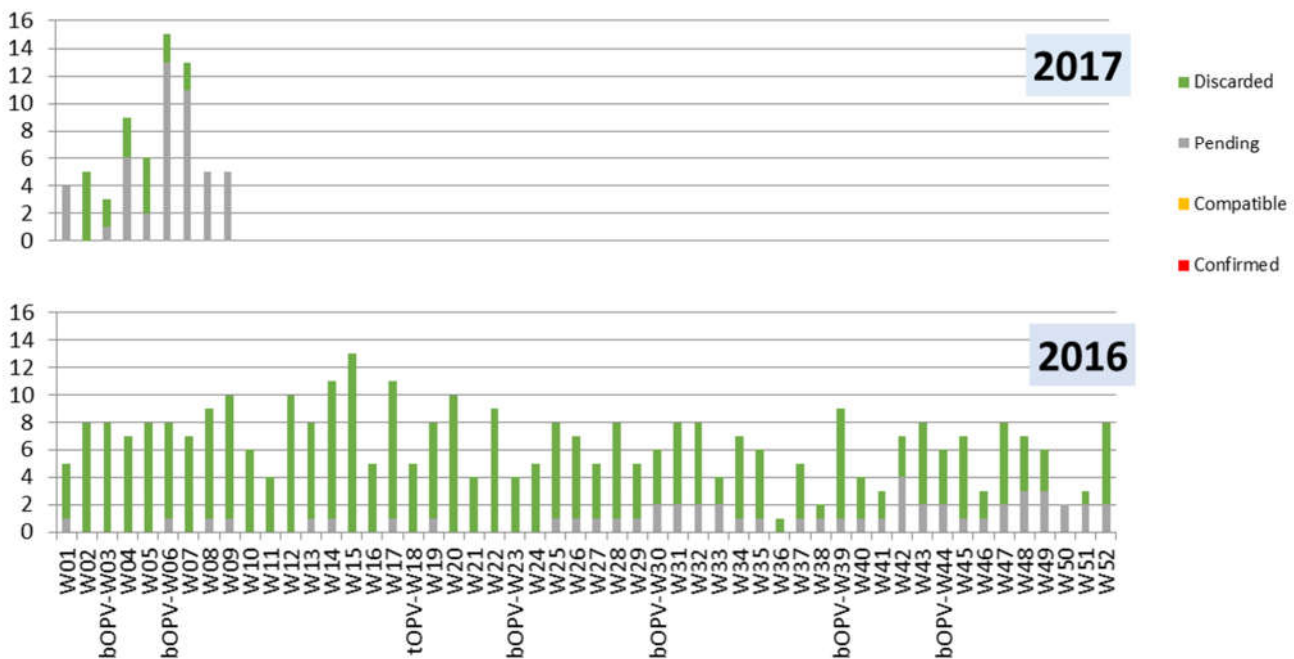
- » (344) AFP cases have been reported.
- » No new Polio (WPV, VDPV) has been detected in 2016, nor compatible cases.
- » Key surveillance indicators: Non-polio AFP rate (5.41), Stool Adequacy rate (81.1%), NPEV Isolation rate (18.89%) and Sabin-like Virus Isolation (3.77%).

2017

- » (65) AFP cases were reported up to week (9) - 2017
- » No new Polio (WPV, VDPV) has been detected in 2017
- » Key surveillance indicators: Non-polio AFP rate (8.7), Stool Adequacy rate (92.3%), No lab results yet

Distribution of polio and non-polio AFP cases by classification and week of onset 2016 - 2017

Classification of AFP/Non-AFP cases 2016 - 2017

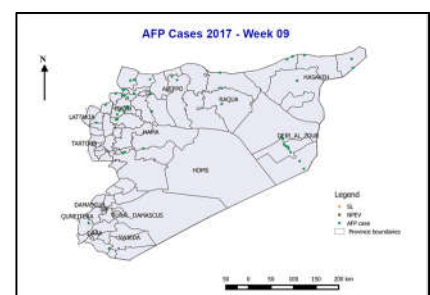
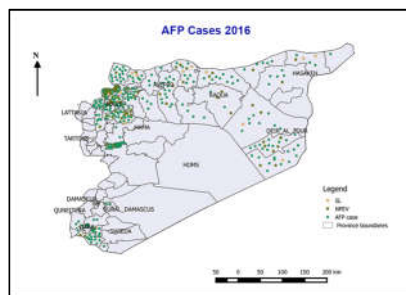
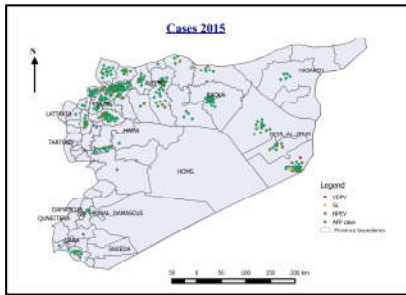


The campaign type is placed unedrneath the epi-week

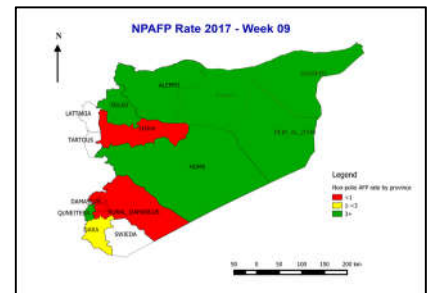
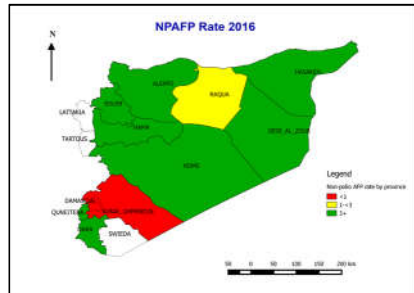
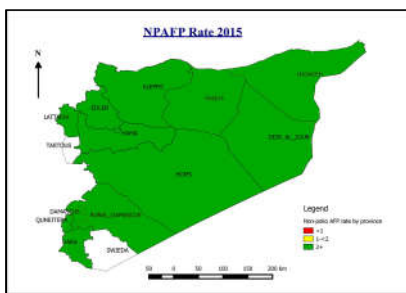
Classification of AFP cases and surveillance indicators 2016 - 2017

GOVERNORATE	Population under 15	Total AFP		Confirmed		Compatible		Discarded		Pending Classification		Pending Lab Results		Non-polio AFP rate		Stool Adequacy %		NPEV %		Sabin Like %		Expected No (1/100,000)	
		2017	16	17	16	17	16	17	16	17	16	17	16	17	16	17	16	17	16	17	16	17	16
ALEPPO	835,083	89	13	0	0	0	0	77	6	12	7	4	5	4.4	9.0	83.1	76.9	13.5	0.0	5.6	0.0	21	9
EDLEB	818,422	101	21	0	0	0	0	98	8	3	13	0	12	10.5	14.8	84.2	95.2	28.7	0.0	3.0	0.0	10	9
HAMA	42,493	9	0	0	-	0	-	9	-	0	-	0	-	6.6	0.0	77.8	-	11.1	-	0.0	-	2	1
RAQUA	642,469	22	4	0	0	0	0	19	2	3	2	2	2	2.9	3.6	81.8	100.0	22.7	0.0	4.5	0.0	8	7
DEIR_AL_ZOUR	808,708	43	11	0	0	0	0	43	0	0	11	0	11	4.4	7.9	60.5	100.0	20.9	0.0	4.7	0.0	10	9
HASAKEH	405,389	21	12	0	0	0	0	20	1	1	11	0	11	4.4	17.1	85.7	91.7	19.0	0.0	9.5	0.0	5	5
HOMS	109,459	24	2	0	0	0	0	6	0	18	2	17	2	14.0	10.6	95.8	100.0	8.3	0.0	0.0	0.0	2	2
RURAL_DAMASCUS	243,417	2	0	0	-	0	-	1	-	1	-	1	-	0.5	0.0	0.0	-	0.0	-	0.0	-	4	3
DARA	372,872	29	1	0	0	0	0	16	0	13	1	13	1	6.8	1.5	82.8	100.0	10.3	0.0	0.0	0.0	5	4
QUNEITERA	21,658	4	1	0	0	0	0	3	1	1	0	1	0	29.9	26.7	100.0	100.0	0.0	0.0	0.0	0.0	1	1
GRAND TOTAL	4,299,970	344	65	0	0	0	0	292	18	52	47	38	44	5.4	8.7	81.1	92.3	18.9	0.0	3.8	0.0	69	50

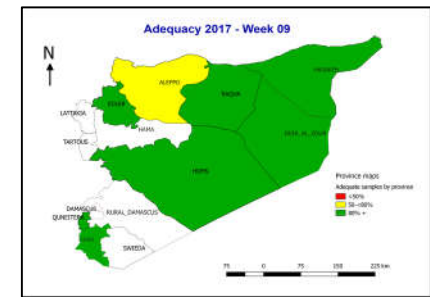
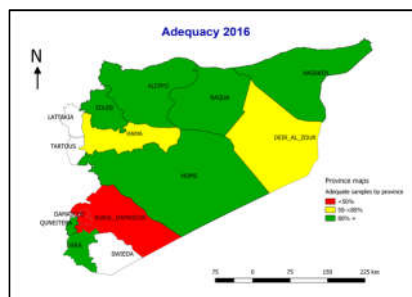
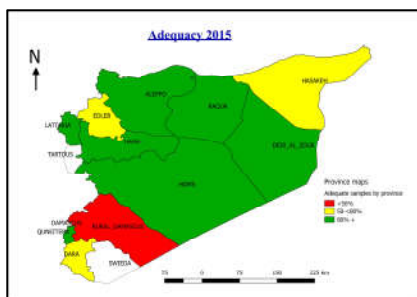
Distribution of AFP cases - 2015 - 2016 - 2017



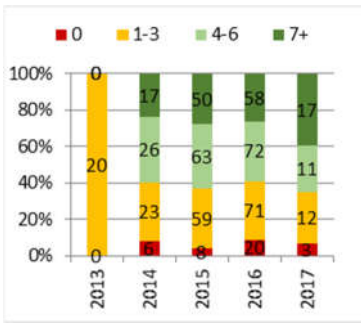
Non-polio AFP rate 2015 - 2016 - 2017 up to week 9



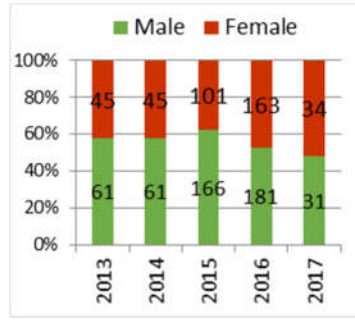
Stool Adequacy 2015 - 2016 - 2017



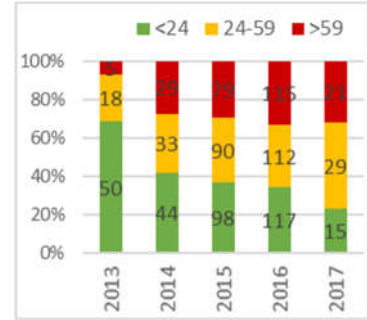
Vaccination of children aged 6-59 month



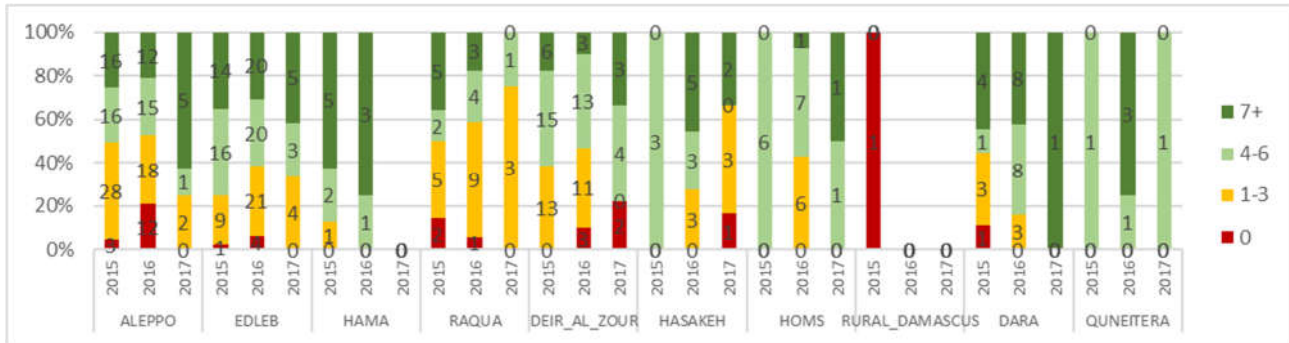
Sex distribution



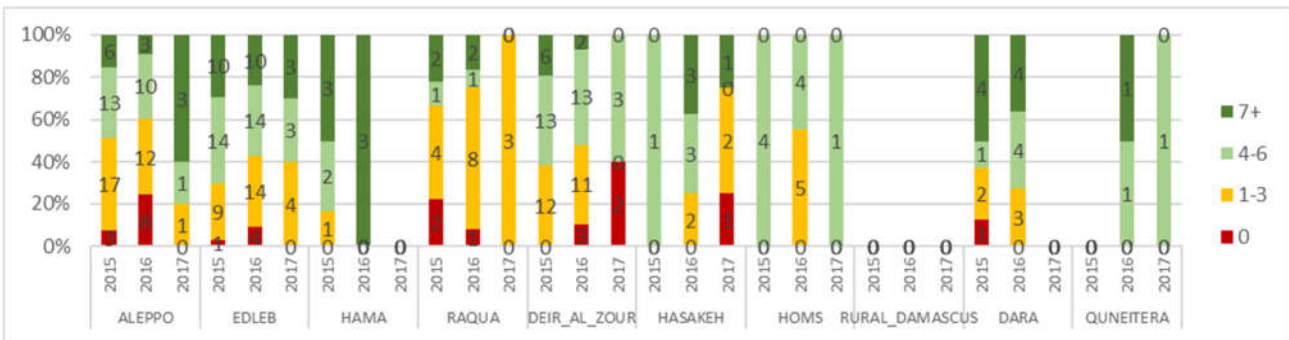
Age distribution



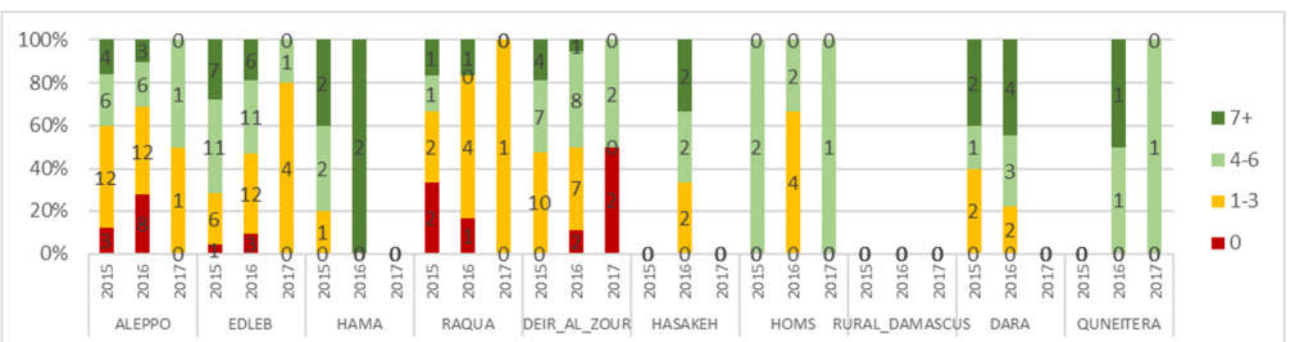
Vaccination status of AFP cases among children 6-59 months, by governorate, 2015 - 2016 - 2017



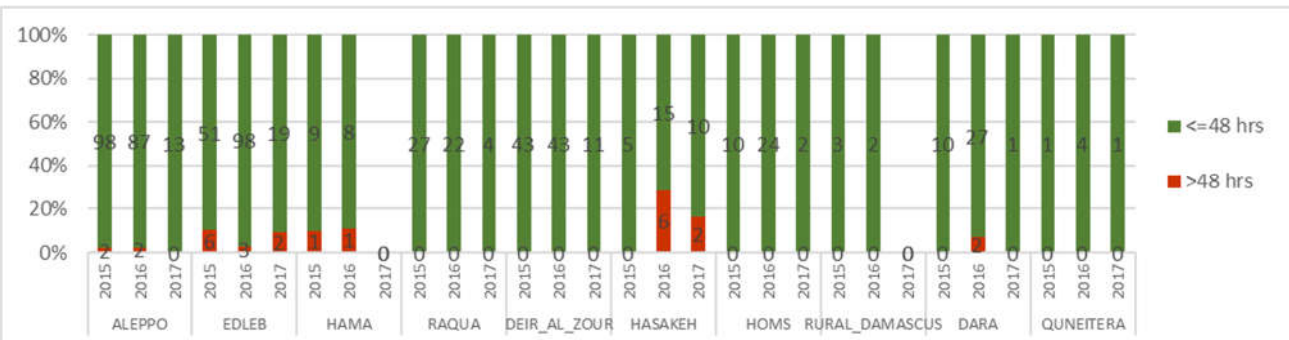
Vaccination status of AFP cases among children 6-35 months, by governorate, 2015 - 2016-2017



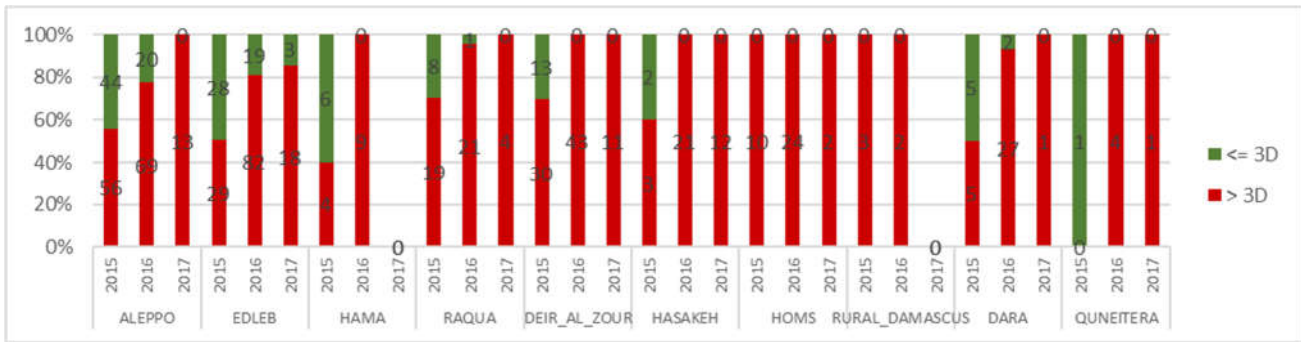
Vaccination status of AFP cases among children 6-23 months, by governorate, 2015 - 2016-2017



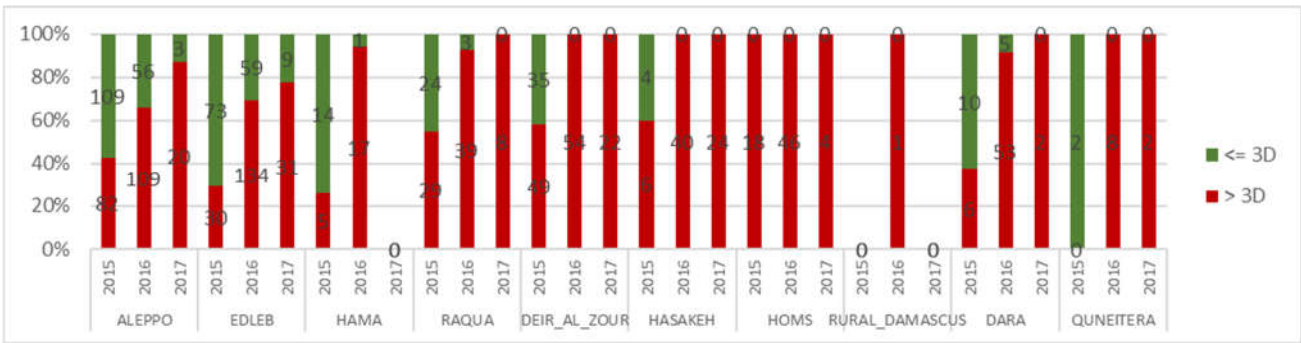
Investigation within 48 hours of detection, Syria 2015 - 2016 - 2017



Percent of cases which 1st sample received in lab within 3 days of collection (by case) 2015 - 2016 - 2017



Percent of cases which 2nd sample received in lab within 3 days of collection (by sample) 2015 - 2016 - 2017



AFP cases notified within 7 days of onset of paralysis 2015 - 2016 - 2017

