

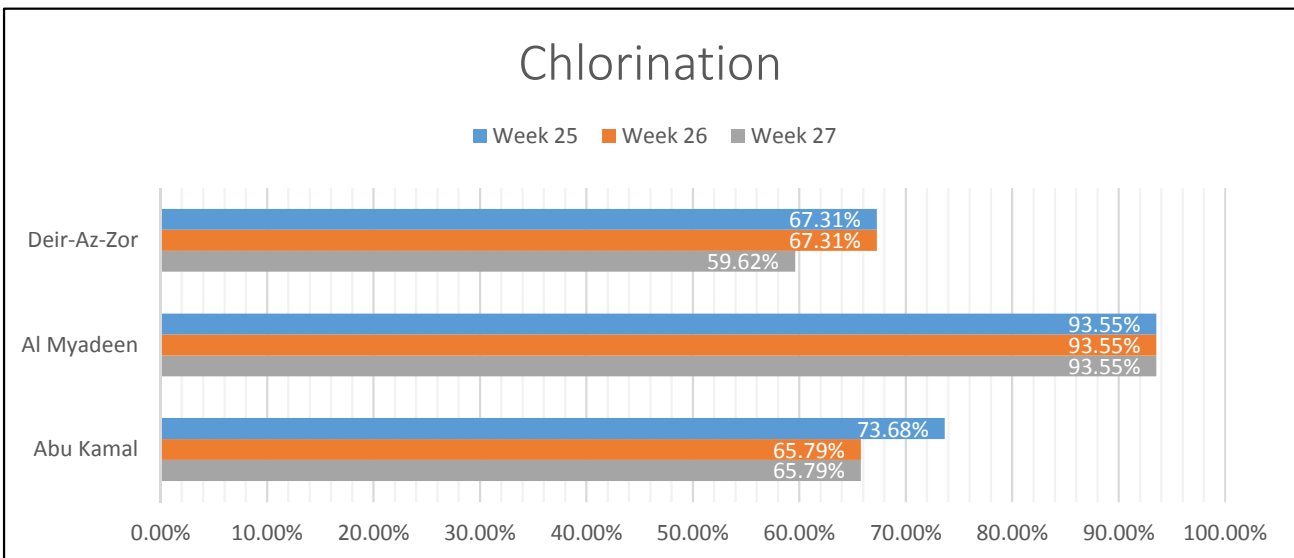


WASH Related Diseases Bulletin - Weeks 25-26-27

Week 25	Water Resources	Chlorinated	Not Chlorinated	Chlorination Percentage
Abu Kamal	38	28	10	73.68%
Al Myadeen	31	29	2	93.55%
Deir-Az-Zor	52	35	17	67.31%

Week 26	Water Resources	Chlorinated	Not Chlorinated	Chlorination Percentage
Abu Kamal	38	25	13	65.79%
Al Myadeen	31	29	2	93.55%
Deir-Az-Zor	52	35	17	67.31%

Week 27	Water Resources	Chlorinated	Not Chlorinated	Chlorination Percentage
Abu Kamal	38	25	13	65.79%
Al Myadeen	31	29	2	93.55%
Deir-Az-Zor	52	31	21	59.62%

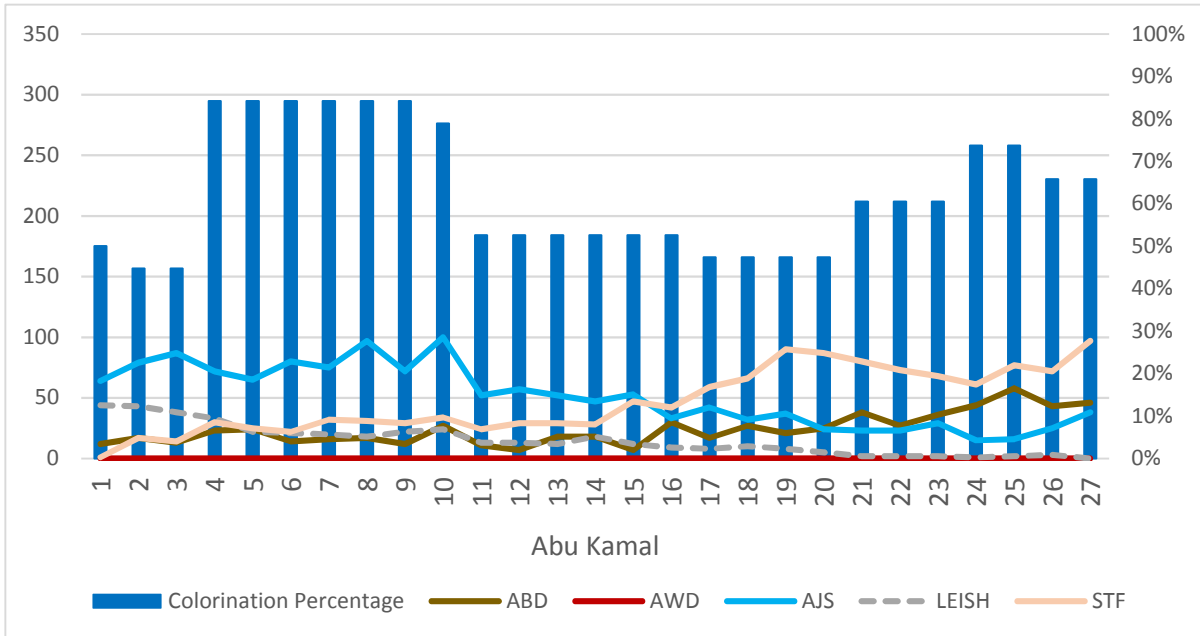


Highlights:

In the last Three weeks, Chlorination coverage in Al Mayadin was 93.55% and in Abu Kamal 65.79% . while it was in Deir-Ez-Zor 59.62% in last week. Most of water stations which used Liquid chlorine had Free Residual Chlorine (FRC) less than guidelines. Whereas most of water stations which used powder chlorine had Free Residual Chlorine (FRC) as per guidelines. There is still lack in Chlorine in most stations. Syrian Red Crescent provided some of water stations with Liquid Chlorine.

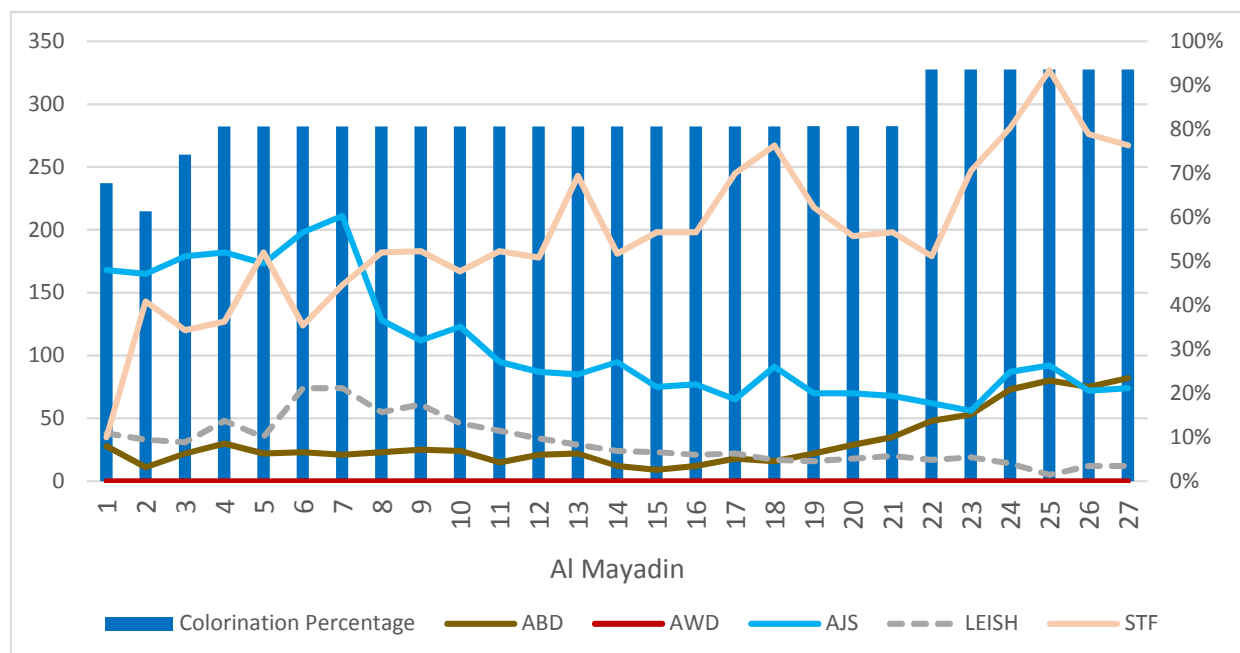
Abu Kamal

No reported cases of Acute Watery diarrhoea(AWD) since the first week of 2014. Compared to the previous weeks, there was a slight decrease of Leishmaniasis (LEISH) . Whereas there was a slight increase of Acute Bloody Diarrhoea (ABD) and Acute Jaundice Syndrome (AJS) and Suspected Typhoid Fever(STF)



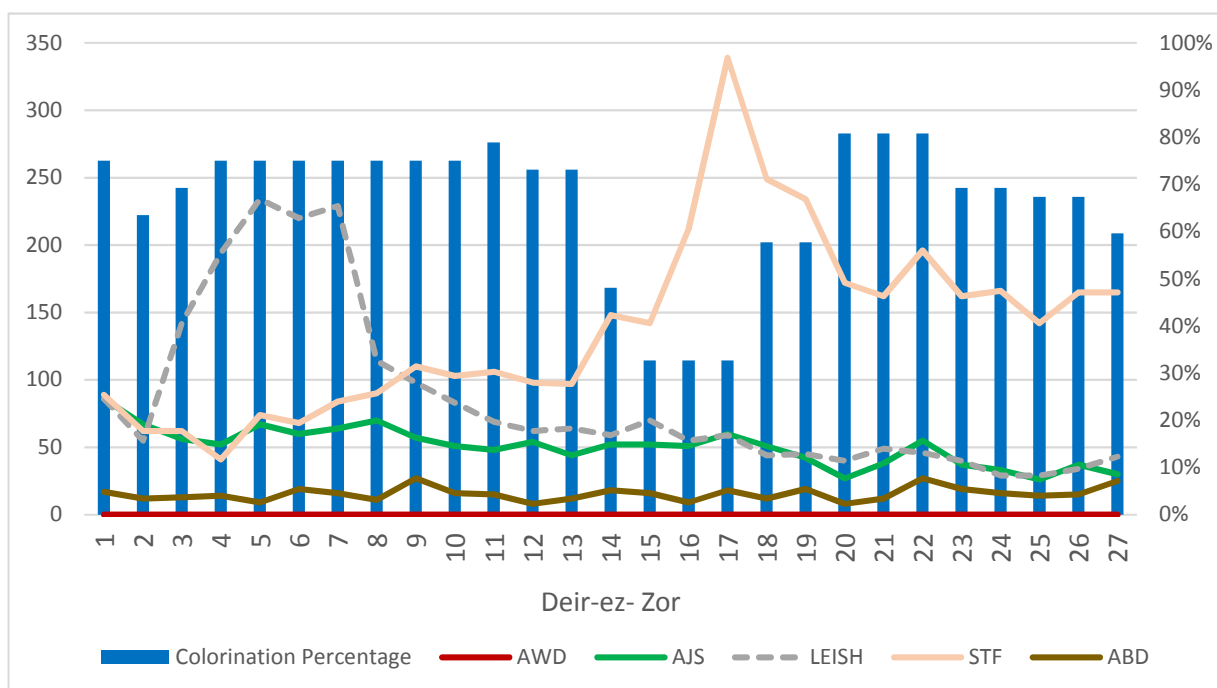
AL Mayadeen

No reported cases of Acute Watery diarrhoea(AWD) since the first week of 2014. Compared to the previous weeks, there was a slight decrease of Suspected Typhoid Fever (STF) .Whereas there was a slight increase of Leishmaniasis (LEISH) and Acute Jaundice Syndrome (AJS) and Acute Bloody Diarrhoea (ABD) .



Deir-Ez- Zor

No reported cases of Acute Watery Diarrhoea(AWD) since the first week of 2014. Compared to the previous weeks, there was a slight decrease of Acute Jaundice Syndrome (AJS). Whereas there was a slight increase of Acute Bloody Diarrhoea (ABD) and Leishmaniasis (LEISH). As for Suspected Typhoid Fever (STF), there was an increase in reported cases between week 25 and 26, and same reported numbers between weeks 26 and 27.



Legend: Right access: Chlorination Percentage, Left access: Number of reported cases, Horizontal access: weeks