

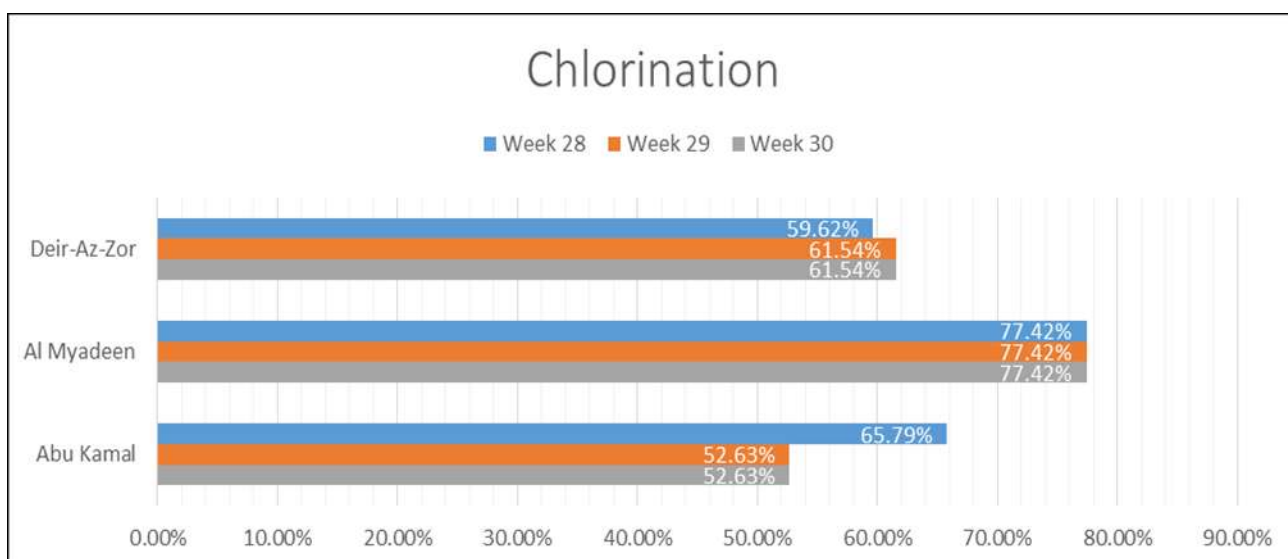


WASH Related Diseases Bulletin - Weeks 28-29-30

Week 28	Water Resources	Chlorinated	Not Chlorinated	Chlorination Percentage
Abu Kamal	38	25	13	65.79%
Al Myadeen	31	24	7	77.42%
Deir-Az-Zor	52	31	21	59.62%

Week 29	Water Resources	Chlorinated	Not Chlorinated	Chlorination Percentage
Abu Kamal	38	20	18	52.63%
Al Myadeen	31	24	7	77.42%
Deir-Az-Zor	52	32	20	61.54%

Week 30	Water Resources	Chlorinated	Not Chlorinated	Chlorination Percentage
Abu Kamal	38	20	18	52.63%
Al Myadeen	31	24	7	77.42%
Deir-Az-Zor	52	32	20	61.54%

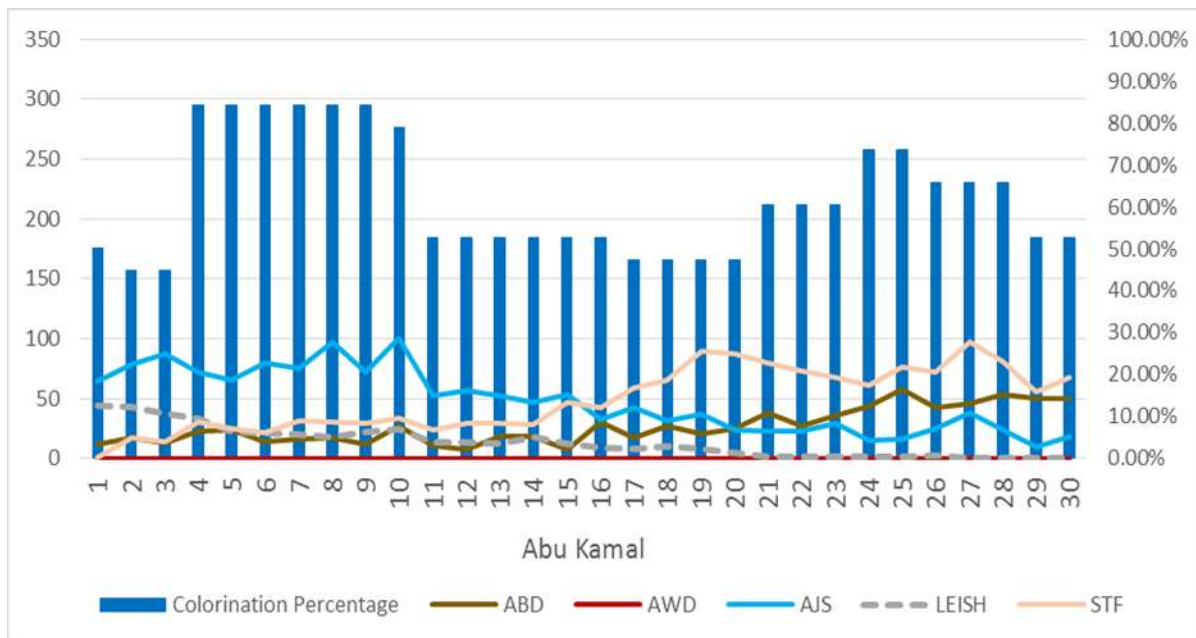


Highlights:

In the last Three weeks, Chlorination coverage in Al Mayadin was 77.42% . while it was in Deir-Ez-Zor 61.54% and in Abu Kamal 52.63 %in last two week. Most of water stations which used Liquid chlorine had Free Residual Chlorine (FRC) less than guidelines. Whereas most of water stations which used powder chlorine had Free Residual Chlorine (FRC) as per guidelines. There is still lack in Chlorine in most stations.Syrian Red Crescent provided some of water stations with Liquid Chlorine.

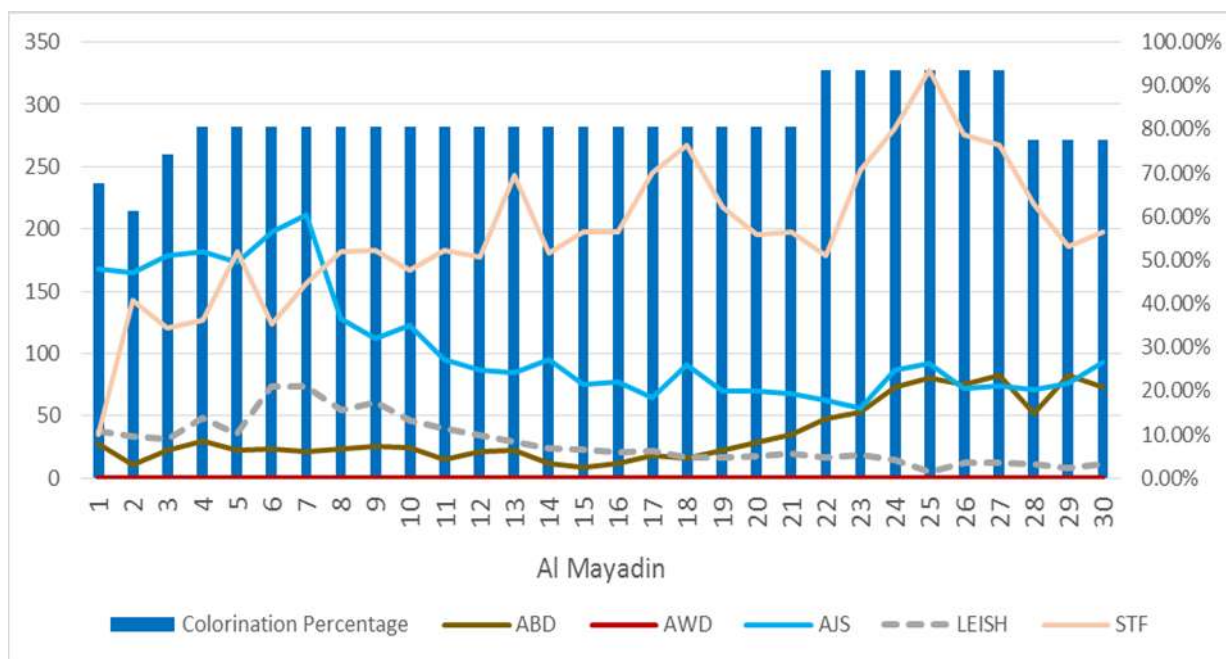
Abu Kamal

No reported cases of Acute Watery diarrhoea(AWD) since the first week of 2014. Compared to the previous weeks, there was a slight increase of Acute Jaundice Syndrome (AJS) and Suspected Typhoid Fever(STF) .for Acute Bloody Diarrhoea (ABD) and Leishmaniasis (LEISH) , there was same reported numbers in last two weeks.



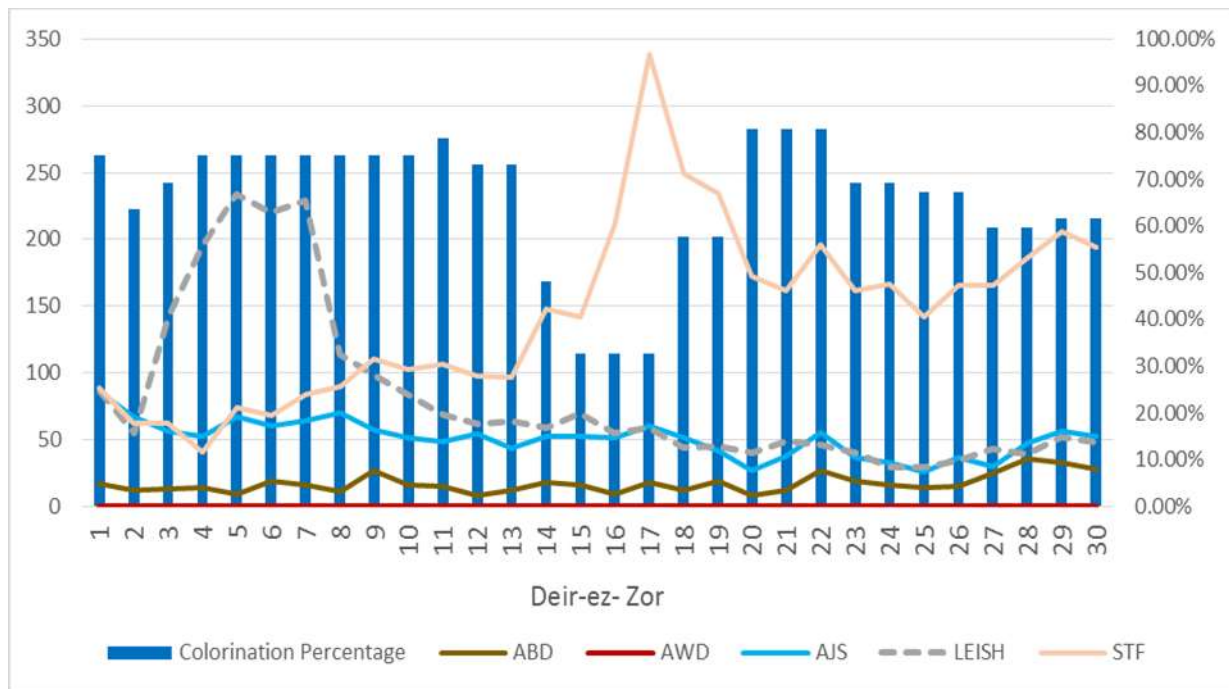
AL Mayadeen

No reported cases of Acute Watery diarrhoea(AWD) since the first week of 2014. Compared to the previous weeks, there was a slight decrease of Acute Bloody Diarrhoea (ABD) .Whereas there was a slight increase of Leishmaniasis (LEISH) and Acute Jaundice Syndrome (AJS) and Suspected Typhoid Fever (STF) .



Deir-Ez- Zor

No reported cases of Acute Watery diarrhoea(AWD) since the first week of 2014. Compared to the previous weeks, there was a slight decrease of Acute Bloody Diarhoea (ABD) and Leishmaniasis (LEISH) and Acute Jaundice Syndrome (AJS) and Suspected Typhoid Fever (STF).



Legend: Right access: Chlorination Percentage, Left access: Number of reported cases, Horizontal access: weeks