

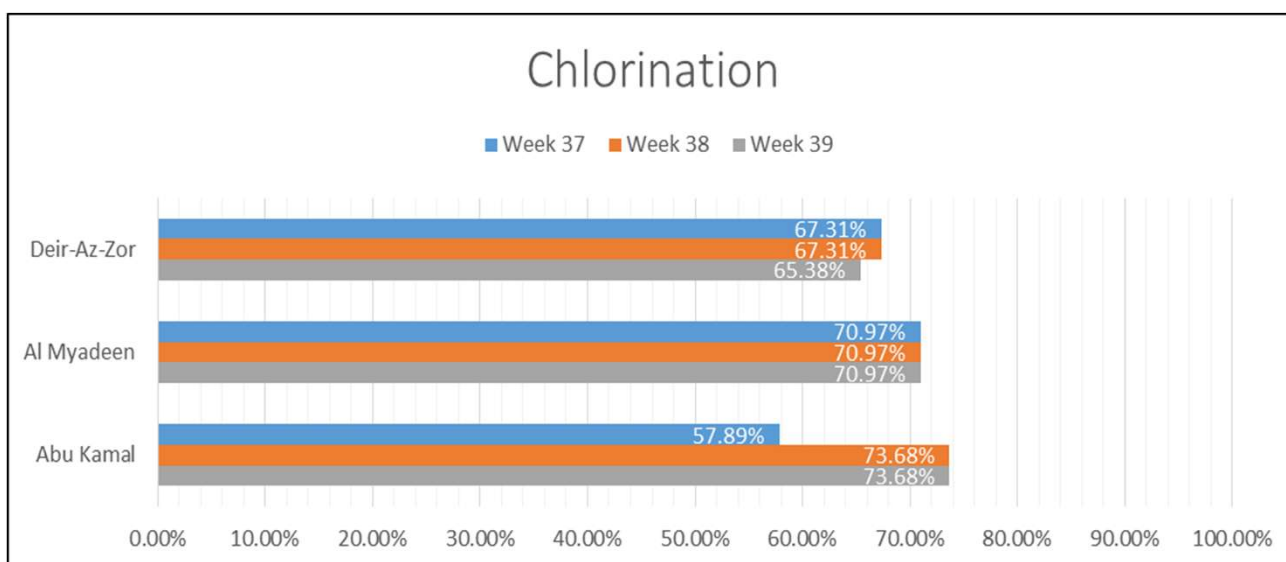


## WASH Related Diseases Bulletin - Weeks 37-38-39

Week 37	Water Resources	Chlorinated	Not Chlorinated	Chlorination Percentage
Abu Kamal	38	22	58	57.89%
Al Myadeen	31	22	9	70.97%
Deir-Az-Zor	52	35	17	67.31%

Week 38	Water Resources	Chlorinated	Not Chlorinated	Chlorination Percentage
Abu Kamal	38	28	10	73.68%
Al Myadeen	31	22	9	70.97%
Deir-Az-Zor	52	35	17	67.31%

Week 39	Water Resources	Chlorinated	Not Chlorinated	Chlorination Percentage
Abu Kamal	38	28	10	73.68%
Al Myadeen	31	22	9	70.97%
Deir-Az-Zor	52	34	18	65.38%

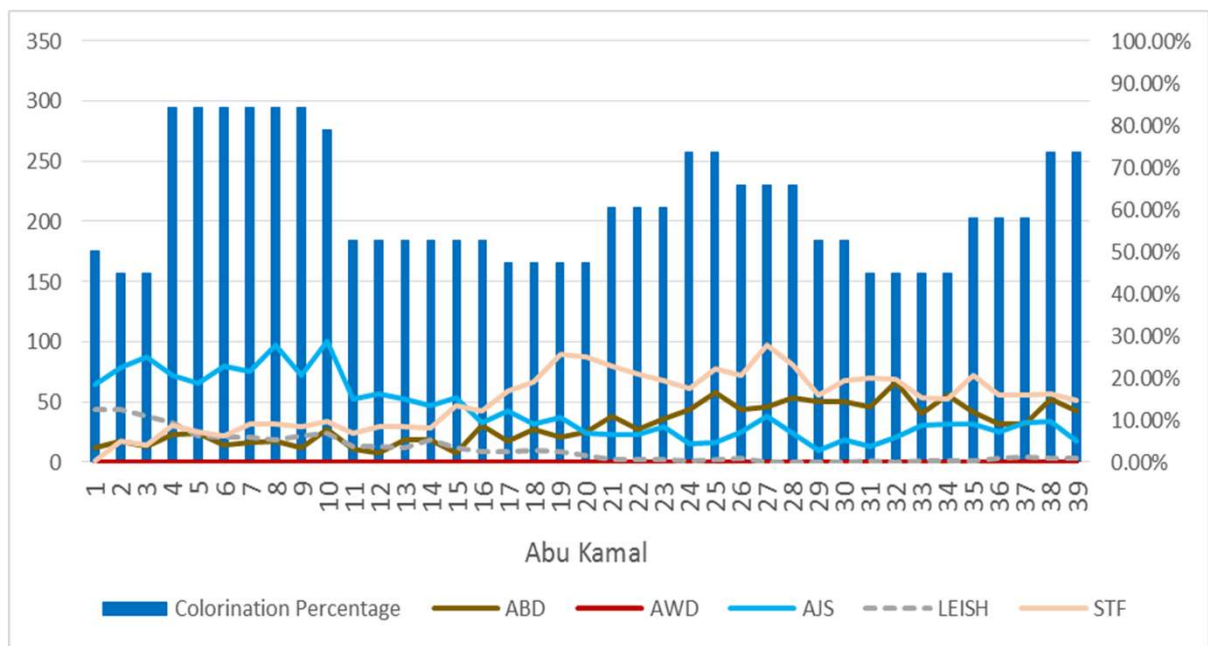


### Highlights:

In the last Three weeks, Chlorination coverage in Al Mayadin was 70.97% and in Deir-Ez-Zor 65.38% . while it was in Abu Kamal 73.68 % in the two last week. Most of water stations which used Liquid chlorine had Free Residual Chlorine (FRC) less than guidelines. Whereas most of water stations which used powder chlorine had Free Residual Chlorine (FRC) as per guidelines. there are lack in Chlorine in most stations. Syrian Red Crescent provided some of water stations with Liquid Chlorine.

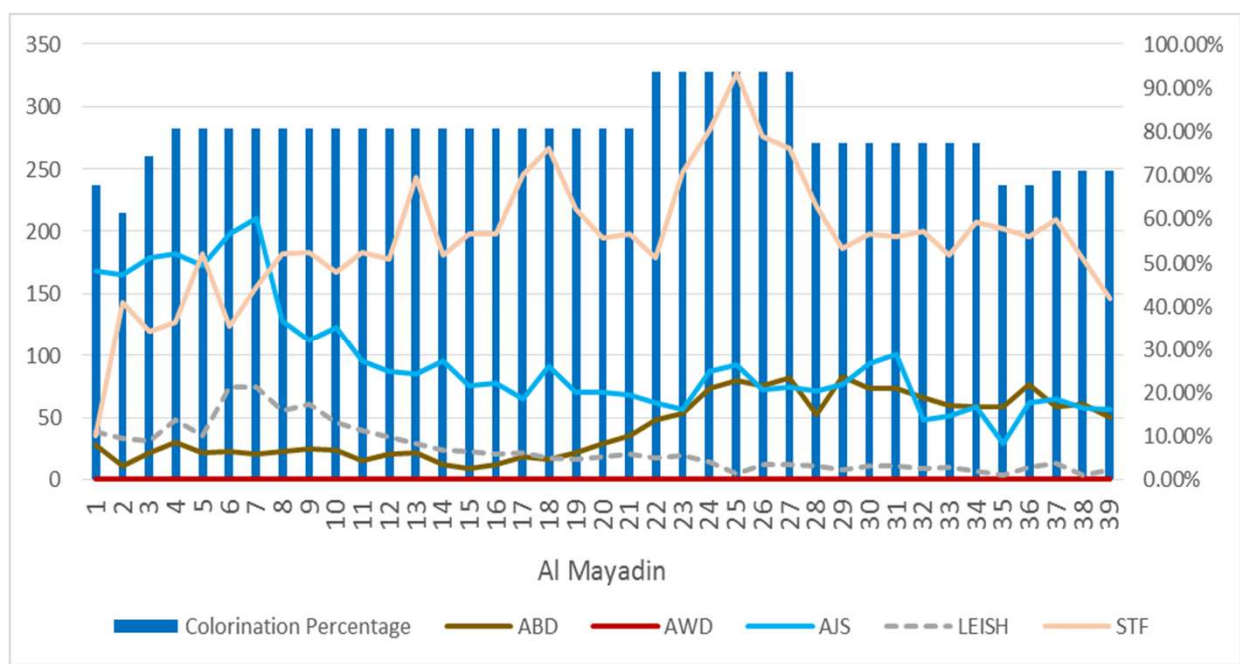
## Abu Kamal

No reported cases of Acute Watery diarrhoea(AWD) since the first week of 2015. Compared to the previous weeks, there was a slight decrease of Acute Jaundice Syndrome (AJS), Leishmaniasis (LEISH), Suspected Typhoid Fever(STF) and Acute Bloody Diarrhoea (ABD)



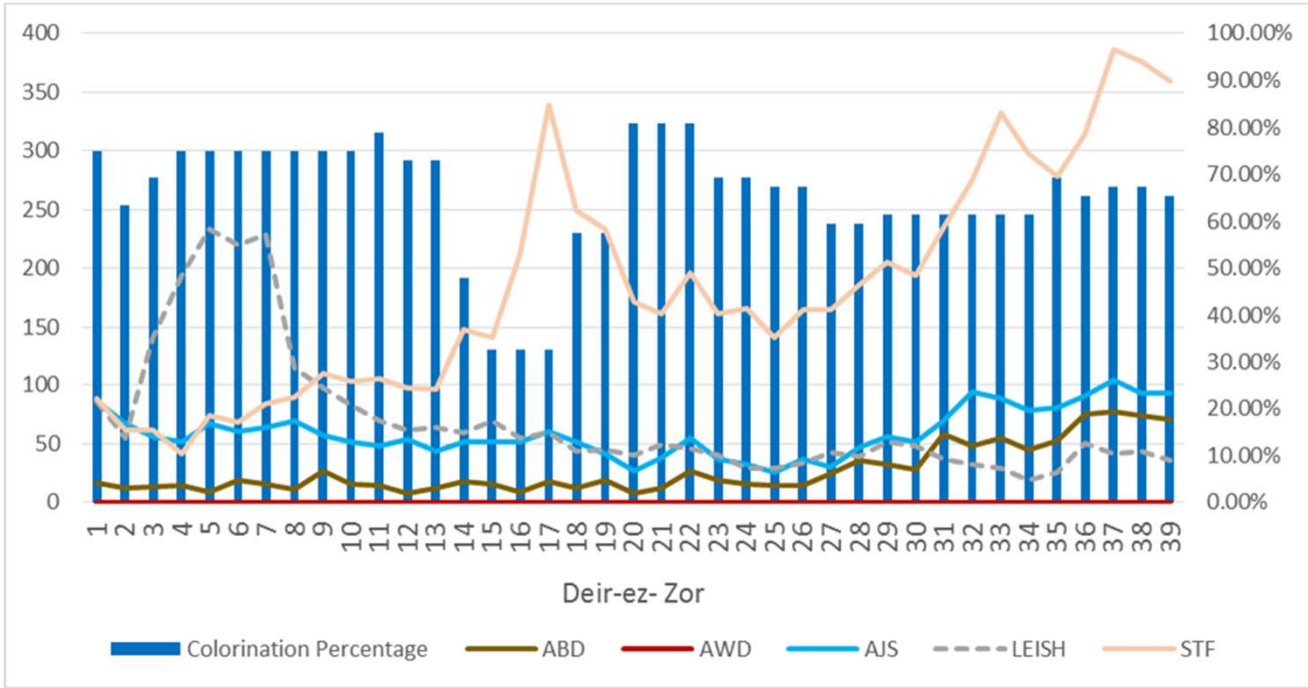
## AL Mayadeen

No reported cases of Acute Watery diarrhoea(AWD) since the first week of 2015. Compared to the previous weeks, there is a slight decrease of Leishmaniasis (LEISH), Acute Jaundice Syndrome (AJS) and Acute Bloody Diarrhoea (ABD). Whereas there was a clear decrease of Suspected Typhoid Fever (STF).



## Deir-Ez- Zor

No reported cases of Acute Watery diarrhoea(AWD) since the first week of 2015. Compared to the previous weeks, there was a slight decrease of Leishmaniasis (LEISH), Acute Jaundice Syndrome (AJS) and Acute Bloody Diarrhoea (ABD) .Whereas there was a high increase of Suspected Typhoid Fever (STF) (It is the highest value in this year).



Legend: Right access: Chlorination Percentage, Left access: Number of reported cases, Horizontal access: weeks